

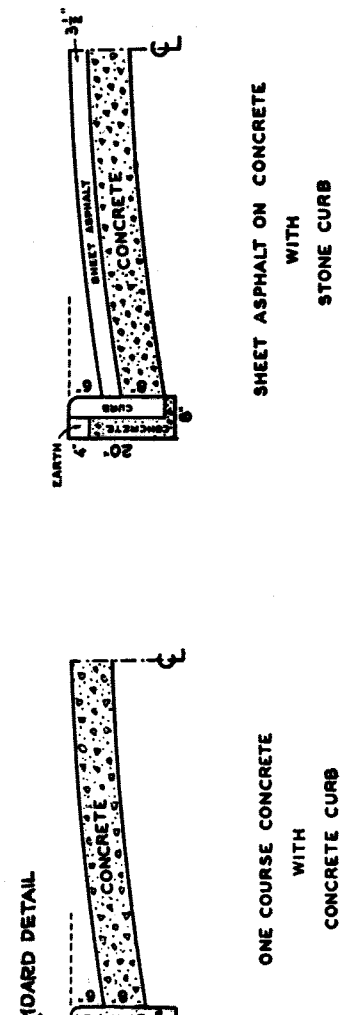
W.P.A. # 8-3063

T. WATER BOARD 9-24-38

CLASS "B" PAVING INDEXED 9-23-38

Levens Jr.

CROSS SECTIONS



AT NO.	CIRCLES	QUANTITIES	LOTS	CITY	LOTS	CITY	LOTS	CITY
		EXCAVATION						
		STRAIGHT CURB NEW						
		OLD CURB RESET						
		CIRCULAR CURB						
		PAVING						
		CONCRETE BASE						

VER. SCALE	1" = 10'	BOOK	1016	PAGE	44
PLAN	R.P.L.	PROFILE	F.W.H.	COMPUTED	
CHECKED		GRADE	V.G.	CHECKED	9/9/38
LOTS 2L	238470	LENGTH			119235
CITY 2L		LENGTH			
TOTAL 2L	238470	LENGTH			119235

DETROIT
DEPARTMENT OF PUBLIC WORKS
CITY ENGINEER'S OFFICE --- DIVISION OF PAVING DESIGN

STREET PAVING PLAN

NAME OF STREET: SHIELDS AVE 60' W.D.
FROM: NEVADA AVE
TO: HILDALE AVE

INDEXED 9-23-38

CLASS B

SHEET 1 OF 2

TYPE OF PAVEMENT: RESURFACING

WIDTH: 60'

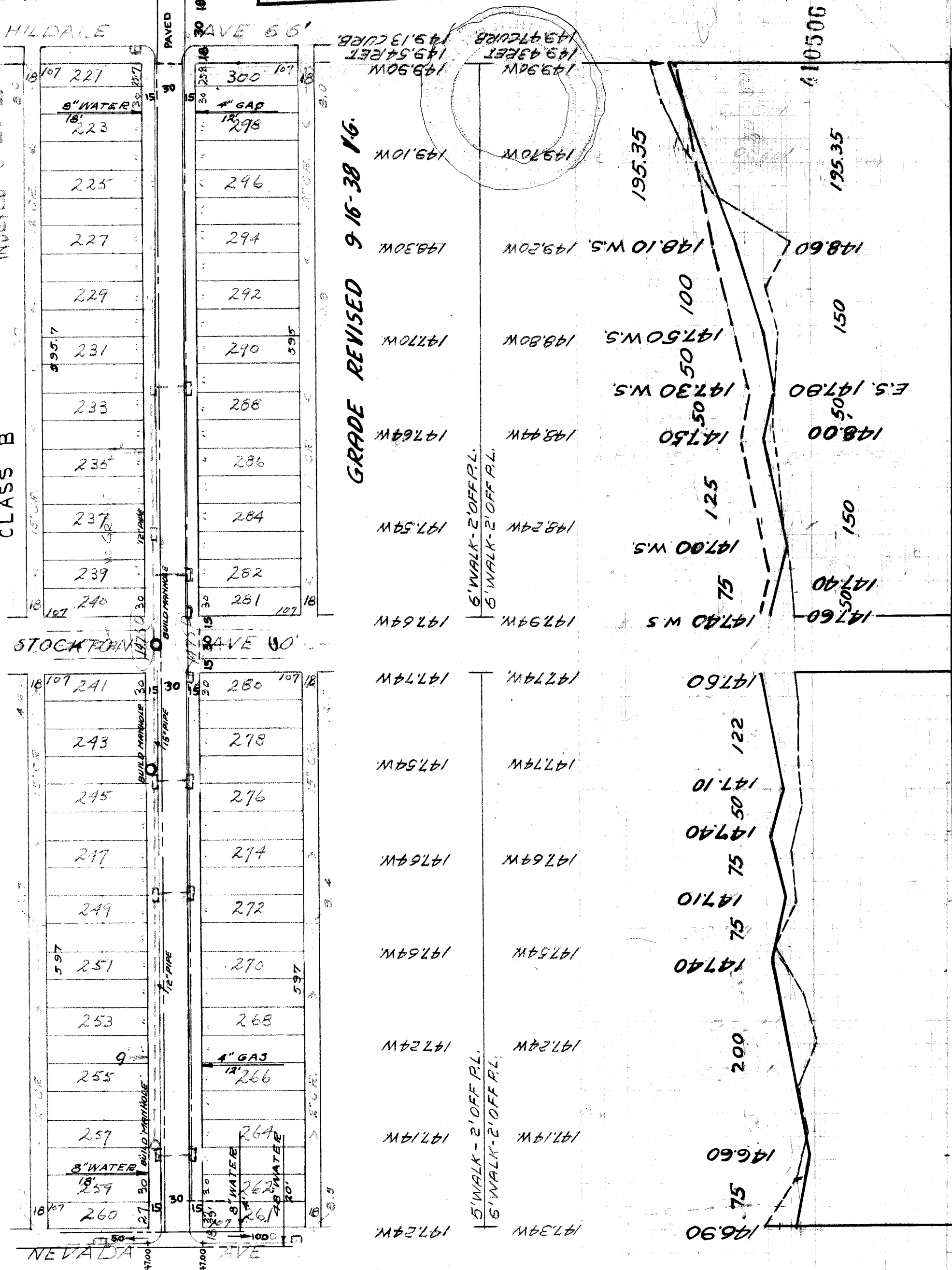
RECORD NO. 119235

INDEX TOPO. NO. 18 45

INDEX NO. 18 45

NUMBER OF SHEETS: 1

SHEET NO. 1



SUMP MANHOLE BASINS BY W.P.A. Installed 10-8-38

EXISTING POOLS & BASINS. NEW

DESIGNED BY	Guillometry	APPROVED	W. Shields
DRAWN BY	J.W. Haase	ENGINEER OF STREETS.	
TRACED BY			
CHECKED BY	Guillometry	ASST. ENGINEER	Martin R. Fisher

BENCH MARKS.

- B.M. - #45.210 - "X" ON S. END OF N.E. WINDOW-SILL OF FIRE HOUSE - N.W. COR. RYAN & HILDALE 151.42
- B.M. - ARROW ON HYD. - N.W. COR. NEVADA & SHIELDS 150.13
- B.M. - ARROW ON HYD. - S.W. COR. STOCKTON & SHIELDS 150.63
- B.M. - ARROW ON HYD. - S.W. COR. HILDALE & SHIELDS 152.85

WATER MAIN OK 12-2-38

GRADE REVISED 9-16-38 Y.G.

DRAINAGE COMPLETED 9-23-38

PAVING COMPLETED 9-23-38