

A-3099 To Width Board

DEPARTMENT OF PUBLIC WORKS DETROIT
 CITY ENGINEER'S OFFICE - DIVISION OF PAVING DESIGN

STREET PAVING PLAN

NAME OF STREET: SHIELDS AVE. 60'
 FROM: MCNICHOLS RD.
 TO: N. OF NANCY AVE.

TYPE OF PAVEMENT: 8" MACADAM - OIL & CHIPS WIDTH: 30'

DESIGNED BY: *G. Kennedy*
 DRAWN BY: F.C. Keywick
 TRACED BY: *G. Kennedy*
 CHECKED BY: *Walter R. Fisher*
 APPROVED: *Walter R. Fisher*
 ENGINEER OF STREETS
 ASST CITY ENGINEER

6-28-39 WATER MAIN O.K.

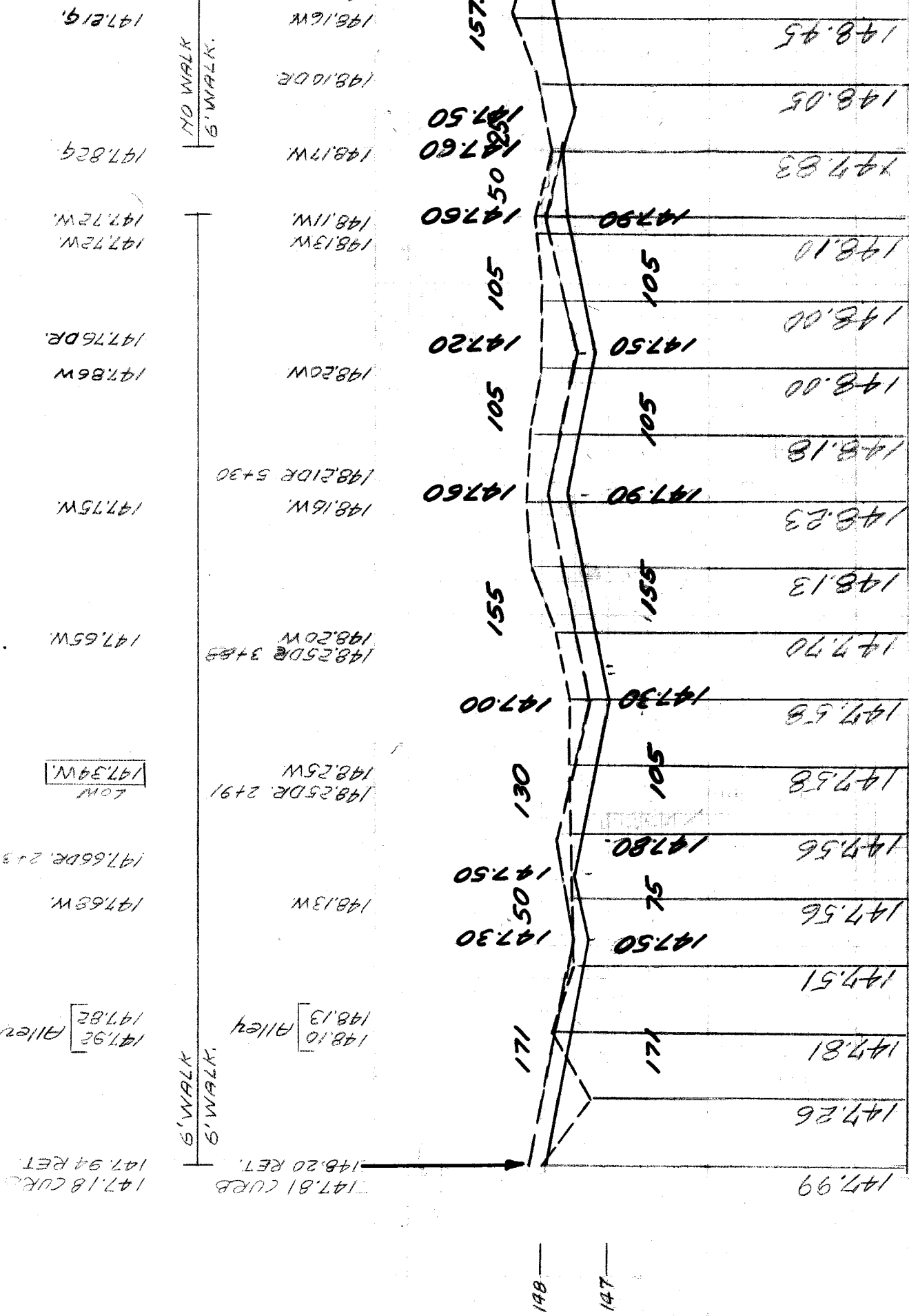
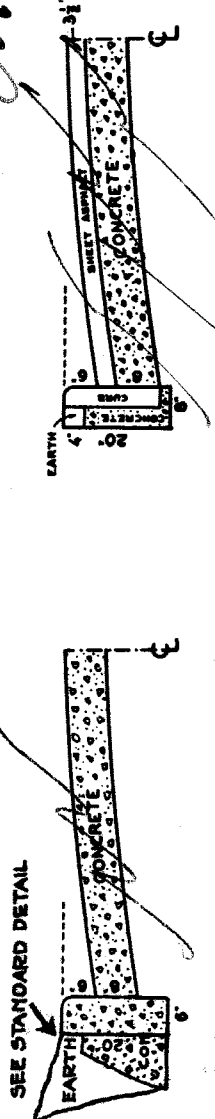
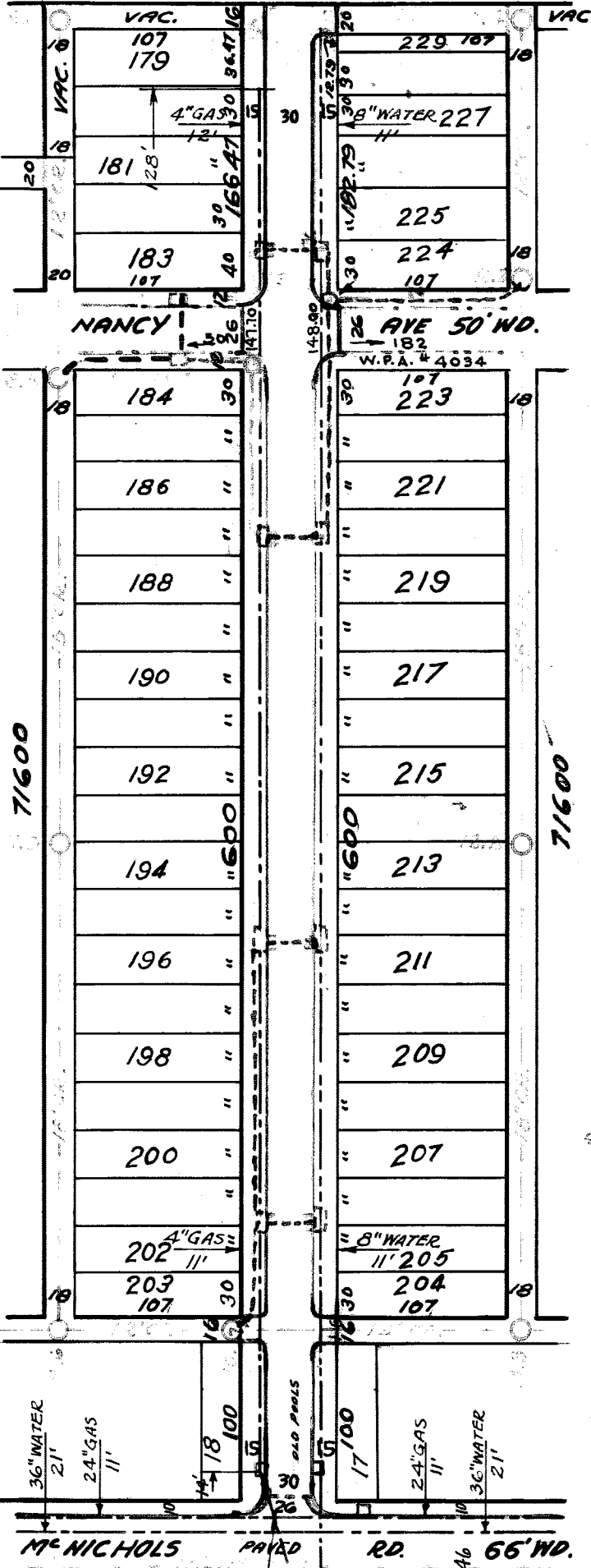
DRAINAGE COMPLETED 12-9-39
 PAVING COMPLETED 12-9-39

REVISION FOR ALLEY RETURNS NORTH OF NANCY 10-18-39 1/6

410505

BOOK 1180 PAGE 64
 DATE 3-8-1938
 PLAN CHECKED 9/9/39
 PROFILE CHECKED 9/9/39
 GRADE CHECKED 9/9/39
 INDEX NO. 1645
 TOPO. NO. 77263
 RECORD NO. 94863

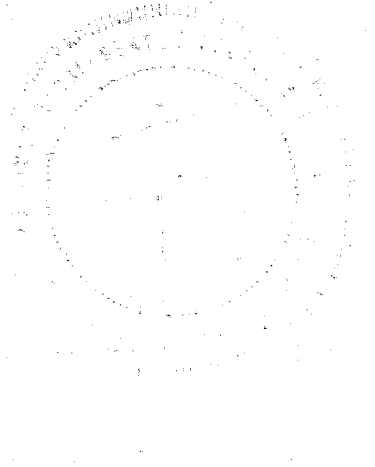
PLAN	PROFILE	COMPUTED
FCR	GRADE	LENGTH
1	182	76
2	187	105
3	197	105
4	200	105
5	200	105
6	200	105
7	200	105
8	200	105
9	200	105
10	200	105
11	200	105
12	200	105
13	200	105
14	200	105
15	200	105
16	200	105
17	200	105
18	200	105
19	200	105
20	200	105



SUMP MANHOLE BASINS BY W.P.A.
 4-2-3-38.

EXISTING POOLS & BASINS. NEW

BENCH MARKS.
 B.M. NAIL IN S. SIDE 30" MAPLE TREE ON MCNICHOLS RD. 149.99
 TO E. OF SUNSET. 150.98
 B.M. ARROW ON HYD. - E. SIDE JUSTINE HOUSE #17156 150.94
 B.M. ARROW ON HYD. - S.E. COR. SHIELDS & MCNICHOLS 151.00
 B.M. ARROW ON HYD. - E. SIDE SHIELDS, OPP HOUSE #17166 151.01
 B.M. ARROW ON HYD. - S.E. COR. SHIELDS & NANCY 151.01



DESIGNED BY	APPROVED
<i>G. Kennedy</i>	<i>Walter R. Fisher</i>
DRAWN BY	ENGINEER OF STREETS
F.C. Keywick	<i>Walter R. Fisher</i>
TRACED BY	ASST CITY ENGINEER
<i>G. Kennedy</i>	<i>Walter R. Fisher</i>

6-28-39 WATER MAIN O.K.

DRAINAGE COMPLETED.....
 PAVING COMPLETED 12-9-39

REVISION FOR ALLEY RETURNS NORTH OF NANCY 10-18-39 1/6

410505