

STREET PAVING PLAN

SHAFTSBURY

S.P.L. OF ST. MARTINS
28'S. OF N.P.L. OF PEMBROKE

38246-7
636

SHEET 1 OF 1

30'

PET. #636 HOLTSMAN'S SILVERMAN 2-28-50 25% P.M.D.

RECORD NO. 72 115

DATE RECORDED: 8 8 50

ONE COURSE CONCRETE INTERL. CURB

AT INTERSECTIONS EXCEPT AS NOTED

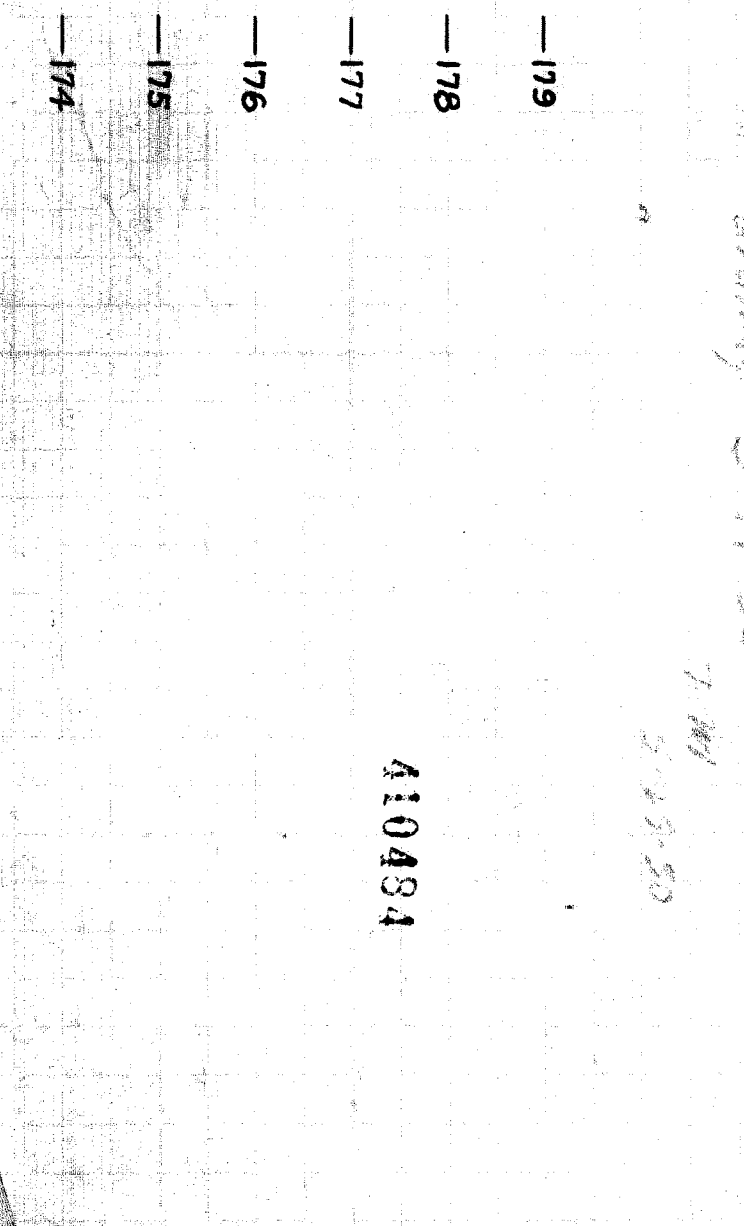
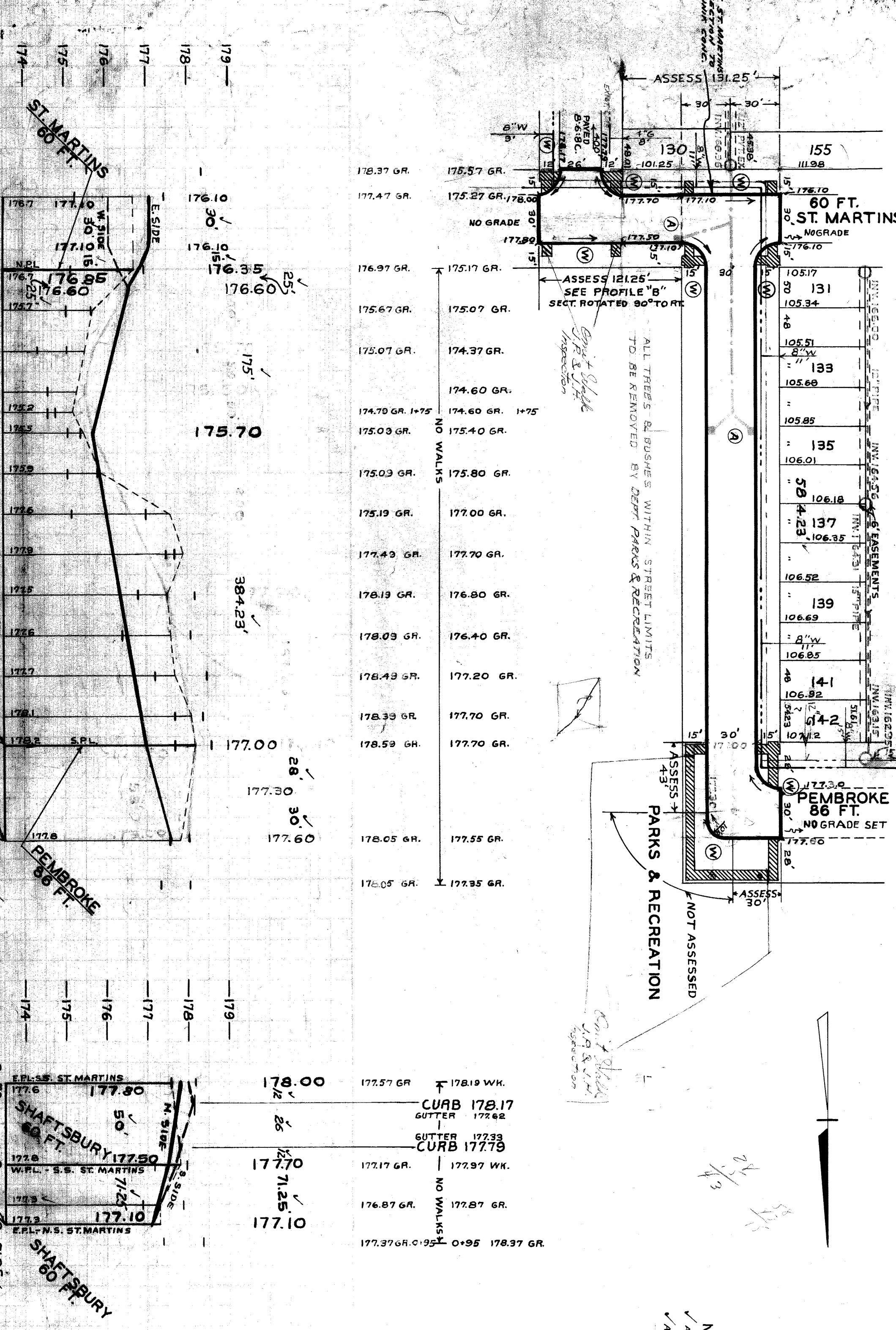
WIDEN 30'

DESIGNED BY	APPROVED
DRAWN BY	CHECKED BY
TRACED BY	APPROVED
DEPUTY CITY ENGINEER	

NO.	DATE	BY	REVISION
1	1/31/50	W.E. HARRIS	PRELIMINARY
2	2/12/50	W.E. HARRIS	REVISED
3	3/1/50	W.E. HARRIS	REVISED
4	3/1/50	W.E. HARRIS	REVISED
5	3/1/50	W.E. HARRIS	REVISED
6	3/1/50	W.E. HARRIS	REVISED
7	3/1/50	W.E. HARRIS	REVISED
8	3/1/50	W.E. HARRIS	REVISED
9	3/1/50	W.E. HARRIS	REVISED
10	3/1/50	W.E. HARRIS	REVISED

PLAN SCALE	1"=100'
STREET WIDTH	1"=50'
ALL DRAINAGE COMPLETE	By D.P.W. 5-24-50
PAVING COMPLETE	C.C. 9-19-50

REVISION	GRADE CHANGED STA. 0+00 TO 0+42. 3-14-50 R.S./M.B. WATER MAINS ADDED 5-1-50 A.M.B.
C-324A	C-367
C-325	C-734
C-368A	C-565
C-367	C-739A



BENCH MARKS:
 CONC. MON. N.W. COR. ST. MARTINS & SHAFTSBURY 175.73
 CONC. MON. S.W. COR. PEMBROKE & SHAFTSBURY 178.00
 ARR. OF H.V.D. S.E. COR. ST. MARTINS & SHAFTSBURY 181.20

NOTES:
 (A) ADJUST TOPS OF EXISTING CATCH BASINS USING PLAT TYPE FRAMES & GAUGES
 (B) SEE NOTE PERTAINING TO CASTINGS
 (C) CONSTRUCT 1938 SQ. FT. OF STD. 4" SIDEWALK
 (D) ADJUST TOP OF 1" WATER MANHOLE
 (E) BACKFILL SEWER PIPE TRENCHES UNDER PROPOSED PAVEMENT WITH APPROVED SAND-GRAVEL MATERIAL. ELSEWHERE FILL & TAMP WITH APPROVED EARTH LAYERS AS REQUIRED
 (F) DEPT. ROADWAYS AT ENDS OF PAVEMENT SHALL BE GRADED BACK & STONED 6" DEEP UNIFORMALLY FOR A DISTANCE OF 10 FT. TO MEET EXISTING GRADES. 63 CU. YDS. INCLUDED UNDER EXCAVATION TOTALS FOR COST.
 (G) CONTRACTOR SHALL FURNISH NEW CASTINGS FOR ALL ADJUSTED BASINS & MANHOLES EXCEPT WHEN SALVAGED CASTINGS ARE AVAILABLE & THEIR USE PERMITTED BY THE ENGINEER. A REDUCTION OF \$1500 FOR EACH TOP SO USED SHALL BE MADE FROM THE ORIGINAL CONTRACT PRICE. OTHERWISE THE SALVAGED CASTINGS MUST BE Hauled TO DRW. YARDS AT STATE FAIR & JOHN R. STS.
 (H) ALL CURBS WITHIN STREET INTERSECTIONS TO BE SEPARATE TYPE III OR INTEGRAL TYPE III, EXCEPT AS NOTED.

DRW. TO INSTALL ALL DRAINAGE.

*D.P.W. started to install
drawing 5-19-50*

410484