

STREET PAVING PLAN

NAME OF STREET: **RUTLAND**

FROM: **N.L. JOY ROAD**

TO: **S.P.L. FITZPATRICK**

TYPE OF PAVEMENT: _____

WIDTH: **30'-36"**

Requested By *Schmedding - 6-12-44*

DESIGNED BY	G. COURT
DRAWN BY	
TRACED BY	
CHECKED BY	M.J.H.
APPROVED	<i>S.P.L. Fitzpatrick</i>
ENGINEER OF STREETS	
955 ST. CITY ENGINEER	

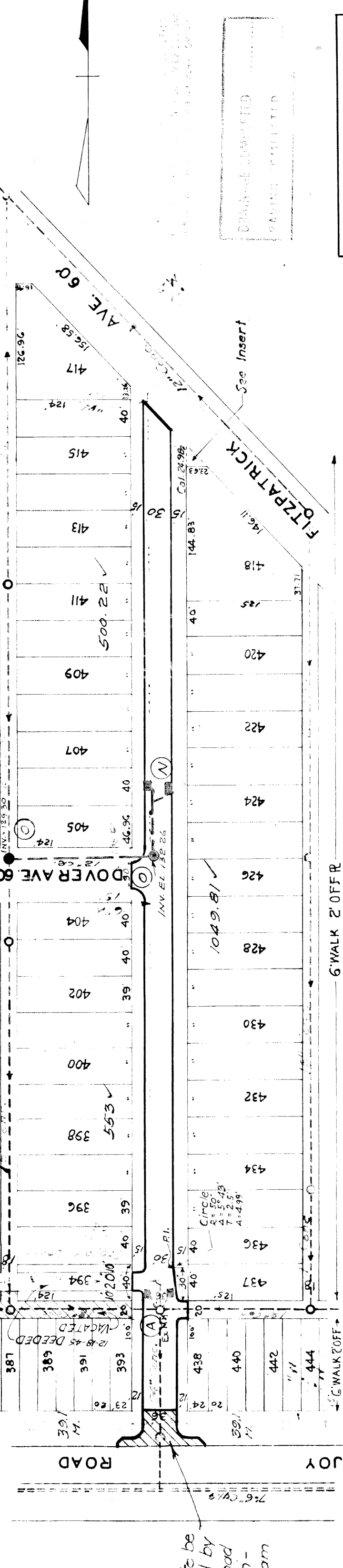
BOOK 1382 PAGE 63	DATE 6-29-44
PLAN	PROFILE
CHECKED	CHECKED
COMPUTED	G.Y.
GRADE	GRADE
LENGTH	LENGTH
10/19/02	62.49
1/08/51	1/08/51

QUANTITIES	LOTS	CITY
EXCAVATION	1945	168
STRAIGHT CURB NEW		
OLD CURB RESET		
CIRCULAR CURB	119	119
PAVING	345	345
6" SIDEWALK	144	144
SEWERS 12"		
CATCH BASIN CONC.	4	4
MANHOLE CONST.	2	2

PROGRESS	DATE
START	FINISH

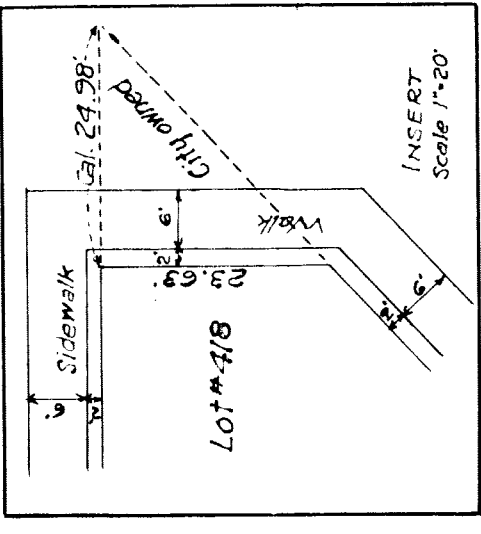
JOB NO.	DATE
BLUE PRINT ISSUED FOR:	
GRADE ONLY	
CATCH BASINS	
PAVING CLASS.	
DEPT. OF WATER SUPPLY	
GAS CO.	

SEWER INDEXED	REVISIONS



BENCH MARKS	ELEV.
100253A N.E. Cor. Longacre & Joy Road	136.05
Spike in T.P. W.S. Rutland 121' N. of Joy Road	137.74
Spike in E.S. & Tree W.S. Rutland 141' N. of Dover	139.59
Spk. in W.S. 12" Tree E.S. Rutland 143.5 of S.E. Cor. Rutland & Fitzpatrick	140.26

NOTE: AT (A) CONSTRUCT 2 STD MANHOLES COMPLETE AND CONNECT TO EXISTING OUTLETS. AT (N) CONSTRUCT 4 STD 18" X 12" Y CATCH BASINS AND CONNECT AS SHOWN. AT (A) ADJUST EXISTING M.HOLE.



NOTE: Approach to be constructed by Wayne Co. Road Commission - 1946 Program

