

JOB C-1201

DEPARTMENT OF PUBLIC WORKS DETROIT
 CITY ENGINEER'S OFFICE - DIVISION OF PAVING DESIGN
STREET PAVING PLAN
RUTHERFORD AVE. 60'
 FROM **VASSAR** TO **PEMBROKE**

Index No.	63
Topo No.	105

Record No. NAME OF STREET
 6557 City Engineer

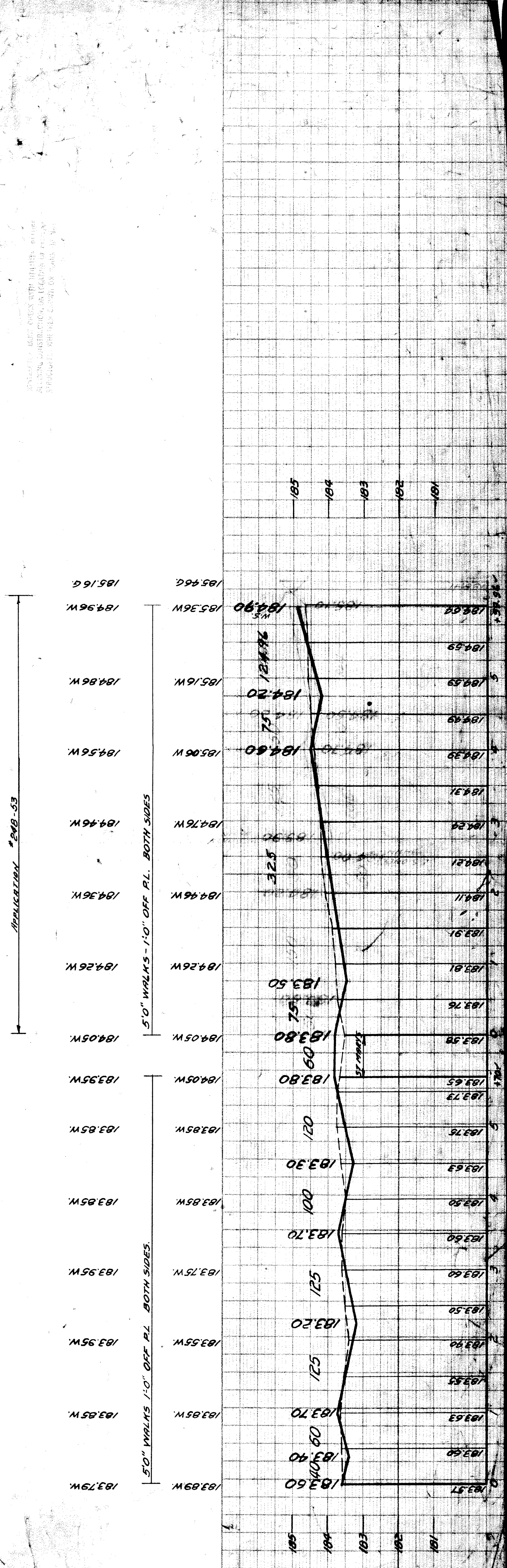
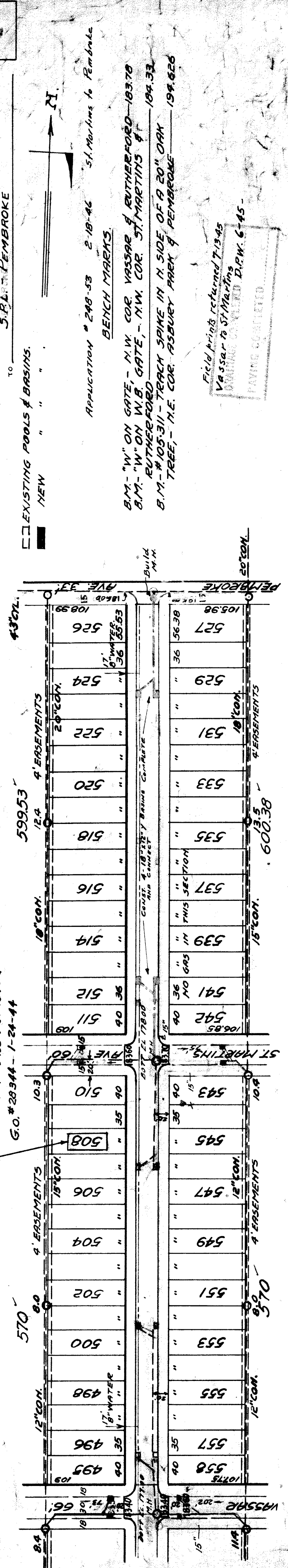
REVISION: -
 2-21-46 Change in Grade

Approved	<i>[Signature]</i>
Designed by	<i>[Signature]</i>
Drawn by	<i>[Signature]</i>
Traced by	<i>[Signature]</i>
Checked by	<i>[Signature]</i>
Hor. 1" = 100'	Date 6-21-39
Scale: Ver. 1" = 100'	

Lot Length	2 108 96
City Length	60
Total	1 229 96
FINAL LENGTH	

Bk.	PG.	LOTS	CITY
Excavation			
Paving			
Ret. Plank 2" x 8"			
Ret. Stone			
Circles			

BK. 555	PG. 59	LOTS	CITY
Excavation			
Paving			
Ret. Plank 2" x 8"			
Ret. Stone			
Circles			



Field prints returned 7-19-45
 Vassar to St. Martins
 BENCH MARKS
 APPLICATION # 248-53

APPLICATION # 248-53 2-18-46 St. Martins to Pembroke
 B.M. - "W" ON GATE, N.W. COR. VASSAR & RUTHERFORD - 183.78
 B.M. - "W" ON W.B. GATE, N.W. COR. ST. MARTINS & RUTHERFORD - 184.33
 B.M. - #105-311 - TRACK SPIKE IN N. SIDE OF A 20" OAK TREE, N.E. COR. ASBURY PARK & PEMBROKE - 194.826

EXISTING POOLS & BASINS
 NEW

APPLICATION # 248-53

5.0" WALKS - 1.0" OFF P.L. BOTH SIDES

5.0" WALKS 1.0" OFF P.L. BOTH SIDES