

DEPARTMENT OF PUBLIC WORKS  
CITY ENGINEER'S OFFICE  
SACRAMENTO, CALIF.

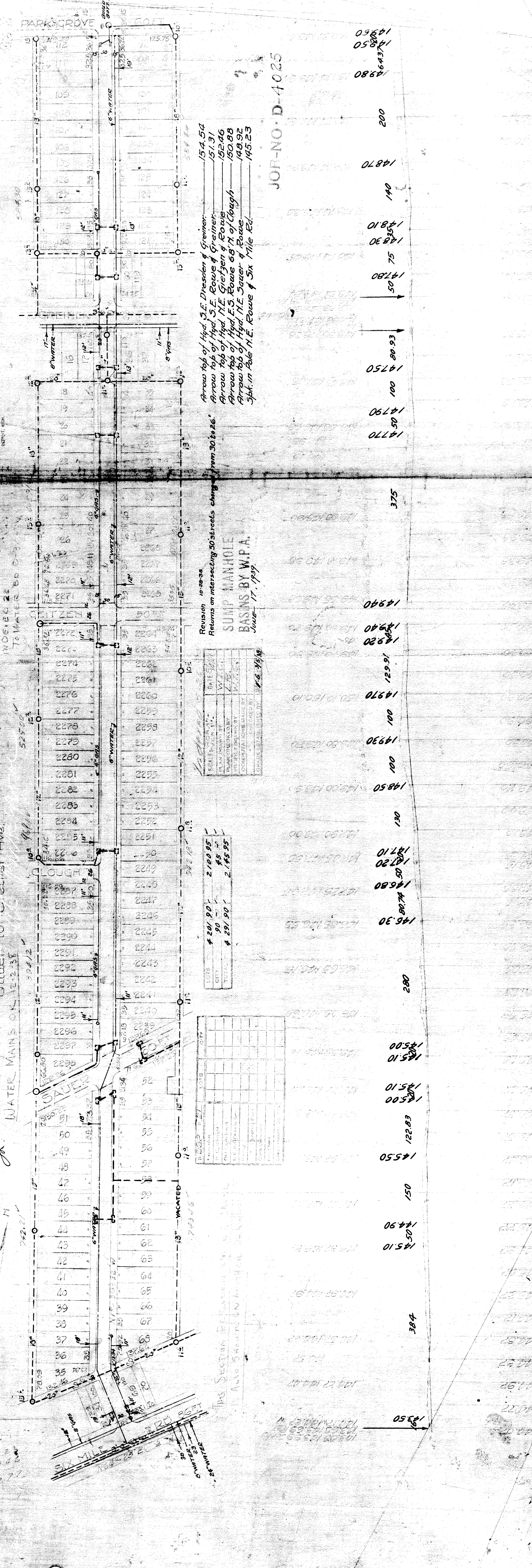
INDEXED TO WATER MAINS ON 12-2-38  
52500 ✓

LOWE AVE. 60 FT  
WATER MAINS ON 12-2-38

WATER MAINS ON 12-2-38  
742.21 ✓

6" WATER  
24" WATER

6" WATER



Revision 10-28-38  
Returns on intersecting 50 streets changed from 30 to 26"

SUMP MANHOLE  
BASINS BY W.P.A.  
JUNE 17, 1939

SEAL	DATE	BY
PLAN	10/28/38	W.P.A.
PREPARED BY		Z.B.
CHECKED BY		W.P.A.
DATE		11/15/38

LOTS	QTY	PRICE	TOTAL
20	90	21.00	1,890.00
90	90	45.00	4,050.00
29	90	2,145.95	193,135.50

SECTION	QTY	PRICE	TOTAL
1	52		
2	53		
3	51		
4	55		
5	56		
6	57		
7	58		
8	59		
9	60		
10	61		
11	62		
12	63		
13	64		
14	65		
15	66		
16	67		
17	68		

THIS SECTION REPRESENTS THE  
ALSO SHOWN ON MAPS AND RECORDS

6" WATER  
24" WATER

6" WATER  
24" WATER

6" WATER  
24" WATER

6" WATER  
24" WATER

6" WATER  
24" WATER

6" WATER  
24" WATER

6" WATER  
24" WATER

Arrow top of Hyd. S.E. Dresden & Greiner: 154.54  
Arrow top of Hyd. S.E. Rowe & Greiner: 151.31  
Arrow top of Hyd. N.E. Grietgen & Rowe: 152.46  
Arrow top of Hyd. E.S. Rowe 68' N. of Cough: 150.88  
Arrow top of Hyd. N.E. Sauer & Rowe: 148.92  
Spk. in Pole N.E. Rowe & Six Mile Rd.: 145.23

14980  
14850  
14861  
14870  
14875  
14880  
14890  
14900  
14910  
14920  
14930  
14940  
14950  
14960  
14970  
14980  
14990  
15000  
15010  
15020  
15030  
15040  
15050  
15060  
15070  
15080  
15090  
15100  
15110  
15120  
15130  
15140  
15150  
15160  
15170  
15180  
15190  
15200  
15210  
15220  
15230  
15240  
15250  
15260  
15270  
15280  
15290  
15300  
15310  
15320  
15330  
15340  
15350  
15360  
15370  
15380  
15390  
15400  
15410  
15420  
15430  
15440  
15450  
15460  
15470  
15480  
15490  
15500

14770  
14780  
14790  
14800  
14810  
14820  
14830  
14840  
14850  
14860  
14870  
14880  
14890  
14900  
14910  
14920  
14930  
14940  
14950  
14960  
14970  
14980  
14990  
15000  
15010  
15020  
15030  
15040  
15050  
15060  
15070  
15080  
15090  
15100  
15110  
15120  
15130  
15140  
15150  
15160  
15170  
15180  
15190  
15200  
15210  
15220  
15230  
15240  
15250  
15260  
15270  
15280  
15290  
15300  
15310  
15320  
15330  
15340  
15350  
15360  
15370  
15380  
15390  
15400  
15410  
15420  
15430  
15440  
15450  
15460  
15470  
15480  
15490  
15500

14770  
14780  
14790  
14800  
14810  
14820  
14830  
14840  
14850  
14860  
14870  
14880  
14890  
14900  
14910  
14920  
14930  
14940  
14950  
14960  
14970  
14980  
14990  
15000  
15010  
15020  
15030  
15040  
15050  
15060  
15070  
15080  
15090  
15100  
15110  
15120  
15130  
15140  
15150  
15160  
15170  
15180  
15190  
15200  
15210  
15220  
15230  
15240  
15250  
15260  
15270  
15280  
15290  
15300  
15310  
15320  
15330  
15340  
15350  
15360  
15370  
15380  
15390  
15400  
15410  
15420  
15430  
15440  
15450  
15460  
15470  
15480  
15490  
15500

14770  
14780  
14790  
14800  
14810  
14820  
14830  
14840  
14850  
14860  
14870  
14880  
14890  
14900  
14910  
14920  
14930  
14940  
14950  
14960  
14970  
14980  
14990  
15000  
15010  
15020  
15030  
15040  
15050  
15060  
15070  
15080  
15090  
15100  
15110  
15120  
15130  
15140  
15150  
15160  
15170  
15180  
15190  
15200  
15210  
15220  
15230  
15240  
15250  
15260  
15270  
15280  
15290  
15300  
15310  
15320  
15330  
15340  
15350  
15360  
15370  
15380  
15390  
15400  
15410  
15420  
15430  
15440  
15450  
15460  
15470  
15480  
15490  
15500

14770  
14780  
14790  
14800  
14810  
14820  
14830  
14840  
14850  
14860  
14870  
14880  
14890  
14900  
14910  
14920  
14930  
14940  
14950  
14960  
14970  
14980  
14990  
15000  
15010  
15020  
15030  
15040  
15050  
15060  
15070  
15080  
15090  
15100  
15110  
15120  
15130  
15140  
15150  
15160  
15170  
15180  
15190  
15200  
15210  
15220  
15230  
15240  
15250  
15260  
15270  
15280  
15290  
15300  
15310  
15320  
15330  
15340  
15350  
15360  
15370  
15380  
15390  
15400  
15410  
15420  
15430  
15440  
15450  
15460  
15470  
15480  
15490  
15500

14770  
14780  
14790  
14800  
14810  
14820  
14830  
14840  
14850  
14860  
14870  
14880  
14890  
14900  
14910  
14920  
14930  
14940  
14950  
14960  
14970  
14980  
14990  
15000  
15010  
15020  
15030  
15040  
15050  
15060  
15070  
15080  
15090  
15100  
15110  
15120  
15130  
15140  
15150  
15160  
15170  
15180  
15190  
15200  
15210  
15220  
15230  
15240  
15250  
15260  
15270  
15280  
15290  
15300  
15310  
15320  
15330  
15340  
15350  
15360  
15370  
15380  
15390  
15400  
15410  
15420  
15430  
15440  
15450  
15460  
15470  
15480  
15490  
15500