

14 BP/5-6-41

DEPARTMENT OF PUBLIC WORKS DETROIT
 CITY ENGINEER'S OFFICE --- DIVISION OF PAVING DESIGN
STREET PAVING PLAN

CARD NO. **0**
 INDEX TOPO NO. **38** NO. **95**
 RECORD NO. **1**
 NAME OF STREET **ROSSINI AVE. 60'**
 FROM **E.P.L BOULDER AVE.**
 TO **W.P.L KELLY ROAD.**

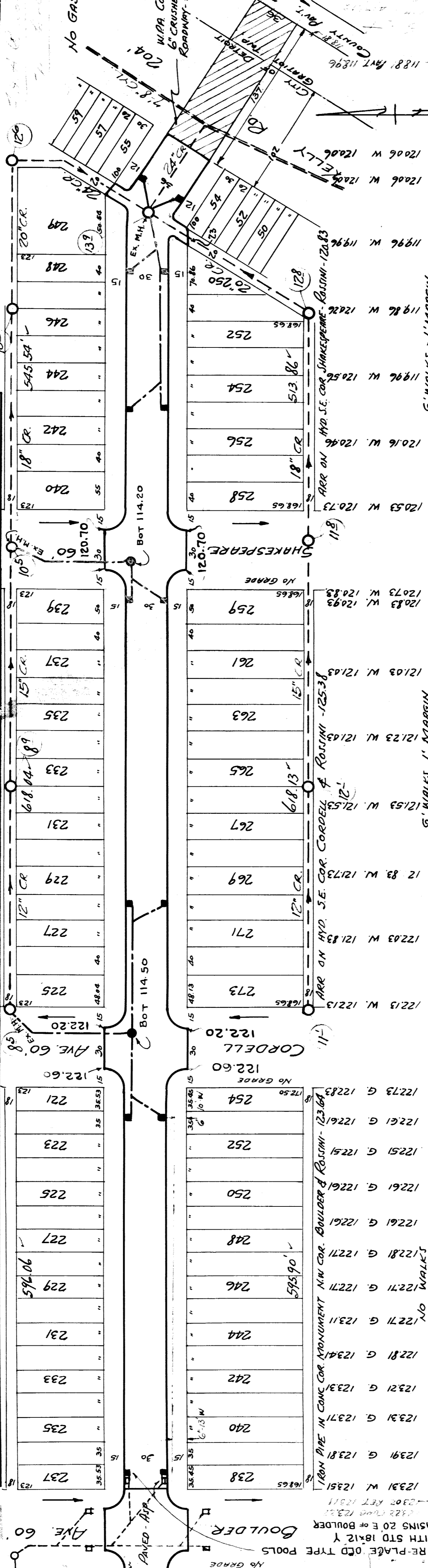
TYPE OF PAVEMENT **CLASS. A - 6" ONE COURSE CONCRETE** WIDTH **30'-36"**

DESIGNED BY <i>F.G. Smoots</i>	DATE <i>2-15-41</i>	BODY <i>153</i>	MADE <i>50</i>
DRAWN BY <i>J. HAMPSHIRE</i>	DATE <i>4-22-42</i>	COMPUTED	
TRACED BY <i>J.H. Hampshire</i>	CHECKED <i>R.3</i>		
CHECKED BY <i>R.R.R.</i>			
APPROVED <i>R.L. Barton</i>			
ENGINEER OF STREETS 1937-CITY ENGINEER			

HOR. SCALE 1" = 100'	VER. SCALE 1" = 4'	PLAN	PROFILE	GRADE	GRADE
CHECKED <i>J.H.</i>	CHECKED <i>H.J.S.</i>	CHECKED <i>J.H.</i>	CHECKED <i>H.J.S.</i>	CHECKED <i>H.J.S.</i>	CHECKED <i>H.J.S.</i>
NOTES	NOTES	NOTES	NOTES	NOTES	NOTES
1. <i>3444</i>	2. <i>557</i>	3. <i>400</i>	4. <i>53</i>	5. <i>1722</i>	6. <i>126</i>
7. <i>178</i>	8. <i>50</i>	9. <i>2100</i>	10. <i>076</i>		

SEWER	INDEXED	REVISIONS	DATE	PROGRESS	JOB NO.	BLUE PRINT ISSUED FOR:	DATE	PROGRESS

QUANTITIES	LOTS	CITY	QUANTITIES	LOTS	CITY
EXCAVATION			EXCAVATION		
STRAIGHT CURB NEW			STRAIGHT CURB NEW		
OLD CURB RESET			OLD CURB RESET		
CIRCULAR CURB			CIRCULAR CURB		
PAVING			PAVING		
CONCRETE BASE			CONCRETE BASE		



STATION	DESCRIPTION	WIDTH	STATION	DESCRIPTION	WIDTH
122.94	123.1 W. 123.1	20	121.76	121.76 W. 121.76	60
124.29	123.91 G. 123.81	20	121.76	121.76 W. 121.76	60
124.36	123.31 G. 123.71	230	121.76	121.76 W. 121.76	60
124.31	123.21 G. 123.31	230	121.76	121.76 W. 121.76	60
124.24	122.81 G. 123.41	230	121.76	121.76 W. 121.76	60
123.99	122.71 G. 123.11	230	121.76	121.76 W. 121.76	60
123.81	122.61 G. 122.61	230	121.76	121.76 W. 121.76	60
123.21	122.51 G. 122.51	230	121.76	121.76 W. 121.76	60
123.74	122.20 G. 122.61	230	121.76	121.76 W. 121.76	60
123.47	122.40 G. 122.73	230	121.76	121.76 W. 121.76	60
122.50	122.20 G. 122.83	230	121.76	121.76 W. 121.76	60
122.20	122.10 G. 122.83	230	121.76	121.76 W. 121.76	60
122.50	121.90 G. 122.83	230	121.76	121.76 W. 121.76	60
122.40	121.70 G. 122.83	230	121.76	121.76 W. 121.76	60
122.40	121.50 G. 122.83	230	121.76	121.76 W. 121.76	60
122.40	121.30 G. 122.83	230	121.76	121.76 W. 121.76	60
122.40	121.10 G. 122.83	230	121.76	121.76 W. 121.76	60
122.40	120.90 G. 122.83	230	121.76	121.76 W. 121.76	60
122.40	120.70 G. 122.83	230	121.76	121.76 W. 121.76	60
122.40	120.50 G. 122.83	230	121.76	121.76 W. 121.76	60
122.40	120.30 G. 122.83	230	121.76	121.76 W. 121.76	60
122.40	120.10 G. 122.83	230	121.76	121.76 W. 121.76	60
122.40	119.90 G. 122.83	230	121.76	121.76 W. 121.76	60
122.40	119.70 G. 122.83	230	121.76	121.76 W. 121.76	60
122.40	119.50 G. 122.83	230	121.76	121.76 W. 121.76	60
122.40	119.30 G. 122.83	230	121.76	121.76 W. 121.76	60
122.40	119.10 G. 122.83	230	121.76	121.76 W. 121.76	60
122.40	118.90 G. 122.83	230	121.76	121.76 W. 121.76	60