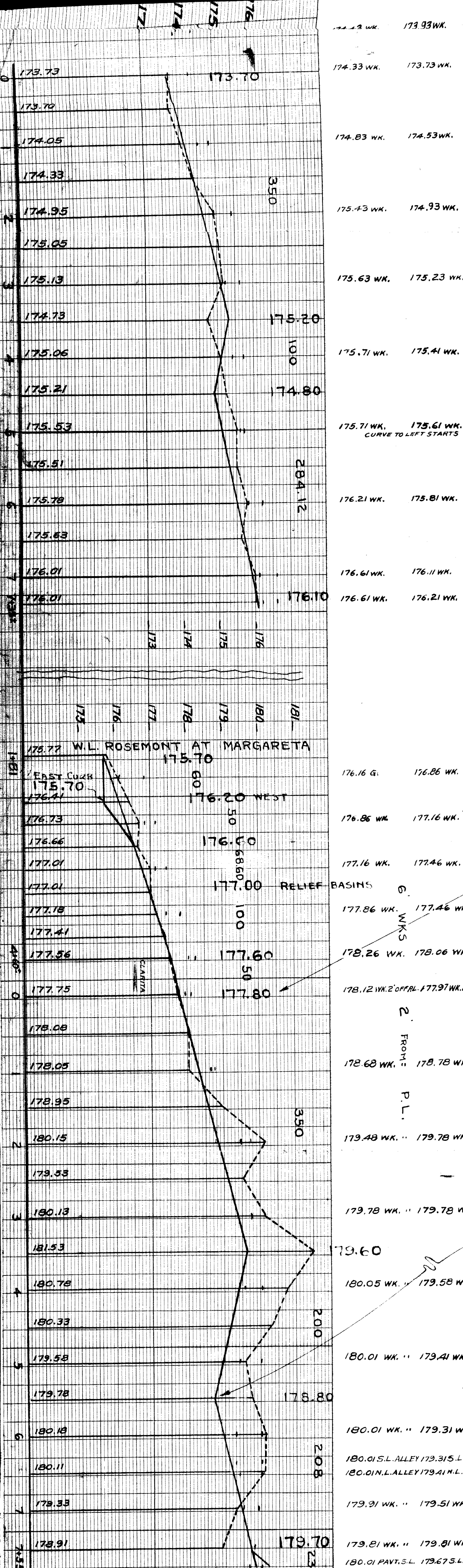
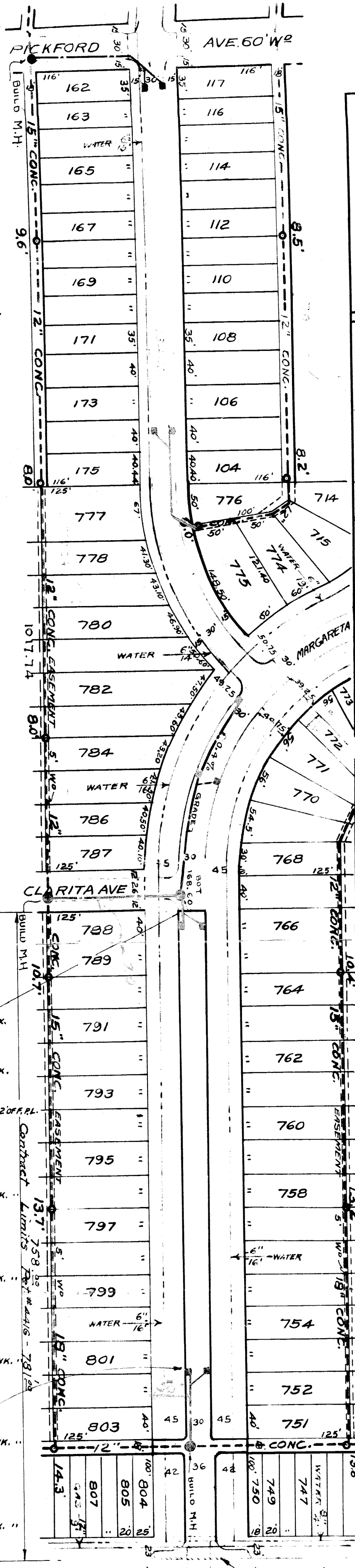


SEWER INDEXED	REVISIONS	DEPT. OF WATER SUPPLY	GAS CO.
<i>[Signature]</i>			
JOB NO.		BLUE PRINT ISSUED FOR:	DATE
		GRADE ONLY	
		CATCH BASINS	
		PAVING-CLASS:	
		CONCRETE BASE	
PROGRESS		EXCAVATION	QUANTITIES
START	FINISH	STRAIGHT CURB NEW	LOTS
		OLD CURB RESET	CITY
		CIRCULAR CURB	LOTS
		PAVING	CITY
		CONCRETE BASE	LOTS
			CITY
HORIZ. SCALE 1"=100'		VERT. SCALE 1"=2'	BOOK 1384 PAGE 35
DATE 12-26-40		DESIGNED BY <i>[Signature]</i>	
DRAWN BY F. Minikel		CHECKED BY <i>[Signature]</i>	
APPROVED <i>[Signature]</i>		ENGINEER OF STREETS	
CITY ENGINEER			



DEPARTMENT OF PUBLIC WORKS  
CITY ENGINEER'S OFFICE - DIVISION OF PAVING DESIGN  
STREET PAVING PLAN  
ROSEMONT RD. 60'x120' W<sup>o</sup>  
PICKFORD N.B.L. - CLARITA  
SEVEN MILE ROAD (33 N.A.S.L.)

TYPE OF PAVEMENT: ONE COURSE CONCRETE WIDTH: 30.836'  
 DET #446 - W.B. BLACKINGTON ET AL,  
 C.C. #4-27-43 - G.O. #25541.

NOTE: CONSTRUCT RETURNS WITH 10 FT. WIDENING - SEE SPECIAL DETAIL - CONC. SLAB IN 7 MI RD TO BE 10" THICK.

BENCH MARKS  
 B.M. NAIL IN POLE N.W. CORNER ROSEMONT AND PICKFORD ELEV. - 175.10  
 B.M. 5" IN LOT \* 715 S.W. COR. ROSEMONT AND MARGARETA ELEV. - 176.28  
 B.M. 8" IN LOT \* 789 N.E. COR. CLARITA AND ROSEMONT ELEV. - 178.16  
 B.M. NAIL 5.5" LT. POLE S.W. COR. ROSEMONT & SEVEN MILE RD. ELEV. - 180.91

INDEX NO.	TOPO NO.	NUMBER OF SHEETS
63	104	1
RECORD NO.		SHEET NO.
		1

DRAINAGE CO. OBTAINED  
 PAVING CO. OBTAINED