

11814-4-60
97-4-21-45

SEWER *O. A. 200* *3/21/45*

REVISIONS

SUPPLEMENTARY DETAILS

DRAWING NO.

NOTE:
BEFORE STARTING CONSTRUCTION CONTRACTOR MUST CHECK WITH UTILITIES FOR LOCATIONS OF EXISTING STRUCTURES WHETHER OR NOT INDICATED ON PLANS.

PLAN SCALE DISTORTED
LOTS & ALLEYS 1" = 100'
STREET WIDTHS 1" = 50'

DRAINAGE COMPLETED

PAVING COMPLETED

QUANTITIES	ESTIMATED	FINAL
EXCAVATION, CU. YRS.	LOTS	CITY
NEW CURB, LIN. FT.	LOTS	CITY
PAVING, SQ. YRS.	LOTS	CITY
SIDWALK, SQ. FT.	LOTS	CITY
MANHOLE, ADJUST.	LOTS	CITY
CONSTRUCT	LOTS	CITY
BASES, CONSTRUCT	LOTS	CITY
SEWER-12" LIN. FT.	LOTS	CITY
SEWER-18" LIN. FT.	LOTS	CITY

NO. SCALE	1" = 100'	NO. USED	PAGE	21
VER. SCALE	1" = 2'	DATE	3-7-45	
PLAN	A, B	PROFILE	A, F	COMPUTED
CHECKED	LJK	GRADE	LJK	CHECKED
LOTS	21	LENGTH	1	09109
CITY	21	LENGTH	1	02110
TOTAL	21	LENGTH	1	119319

DESIGNED BY: LJK.

DRAWN BY: A. Finkberg

TRACED BY: LJK.

CHECKED BY: LJK.

APPROVED: *[Signature]*
ENGINEER OF STREETS

ASST. CITY ENGINEER

CARD NO. 100

INDEX TOPO NO. 69

RECORD NO. 100

NAME OF STREET: N.P.L. OF CATHEDRAL

FROM: S.P.L. OF W. CHICAGO

TYPE OF PAVEMENT: F.H.A. - PRIVATE

WIDTH: 30 FT.

DEPARTMENT OF PUBLIC WORKS DETROIT

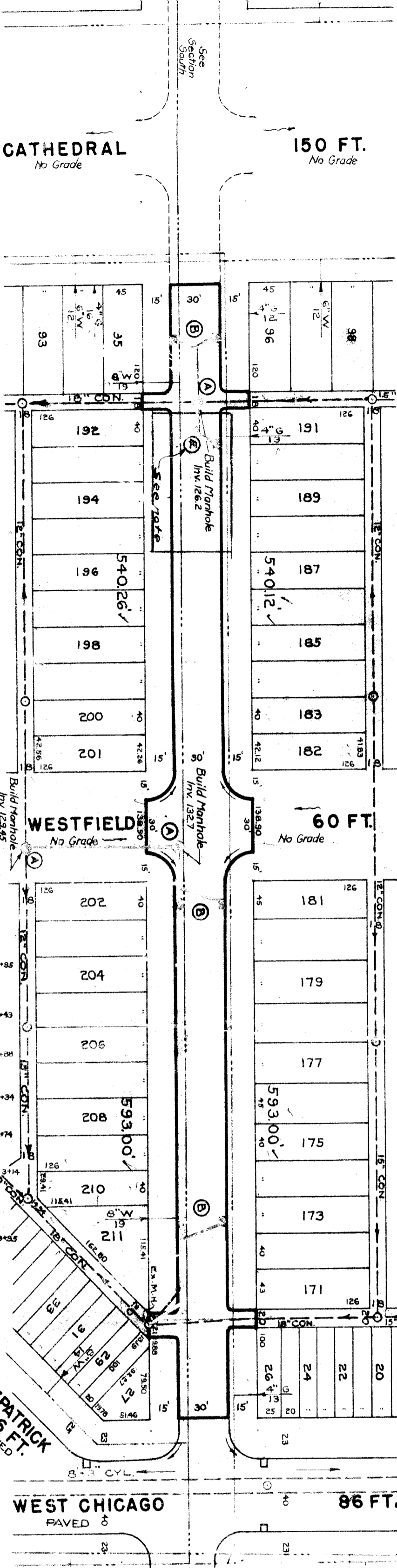
CITY ENGINEER'S OFFICE ... DIVISION OF PAVING DESIGN

STREET PAVING PLAN

ROSEMONT

NUMBERS OF SHEETS: 1

SHEET NO. 1



ELEV.	REMARKS
137.69	6 FT. WALKS
137.79	2 FT. OFF P.L. - BOTH SIDES
137.99	
138.09	
138.49	
138.69	
138.99	
139.19	6 FT. WALKS
139.52	Dr. 0+85
139.42	139.42
139.32	Dr. 1+46
139.42	Dr. 1+43
139.32	Dr. 1+56
139.42	Dr. 1+88
139.42	Dr. 2+34
139.42	Dr. 2+74
139.52	Dr. 2+74
139.42	Dr. 3+14
139.42	Dr. 3+56
139.42	Dr. 3+55
139.42	139.42
139.62	RET. 139.59
139.60	
139.36	CURB
139.40	

NOTE:
At (A) Construct 3 Std. Sewer Manholes complete and connect as shown.
At (B) Construct & Std. 18"x12" Y Basins complete and connect as shown.

BENCH MARKS

ELEV.

P.L. BM #100-253 Mon in walk, NE Cor. Southfield & Joy Rd. 132.59
Arrow on Hyd. opp. Ho. No. 9024 Ashton 139.03
Arrow on Hyd. NE Cor. Ashton & Cathedral 139.54
Arrow on Hyd. NE Cor. Rosemont & Westfield 142.39

RECORDED BY Seymour Owens, 8200 Cambridge Ave. 2-19-45

NOTE -
For F.H.A. improvements omit 2 Standard 18"x12" Y Basins & connections to Manhole. To be constructed when final pavement is installed.
Approved 4-27-45
W. J. W.

