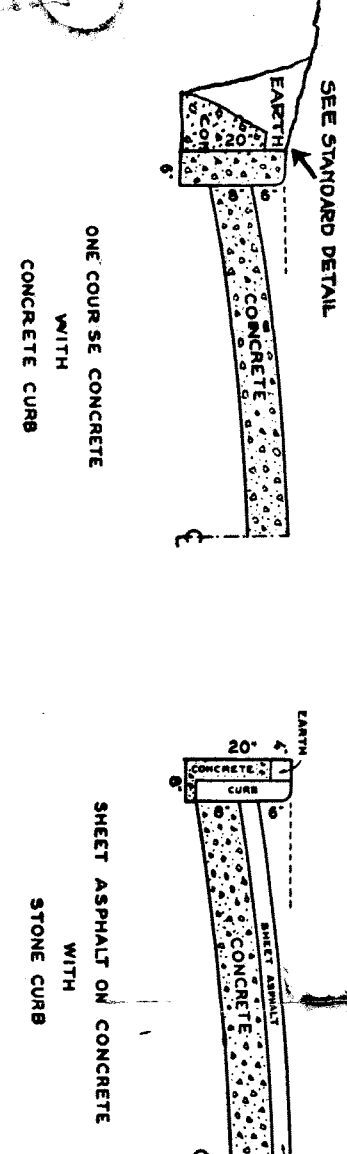


CROSS SECTIONS



*Lewis & Clark*

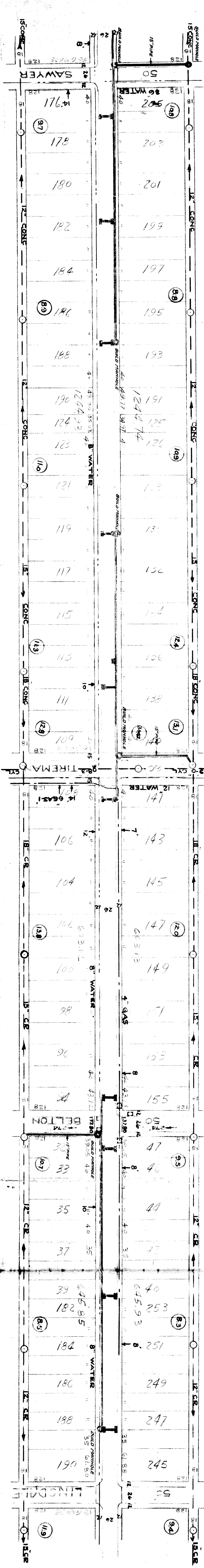
AT NO.	V.	IR.	MAJ.	MIN.	TANG.	ARC.	ANG.	REG.
QUANTITIES								
EXCAVATION								
STRAIGHT CURB NEW								
OLD CURB RESET								
CIRCULAR CURB								
PAVING								
CONCRETE BASE								
TOTAL 7								
CONCRETE BASE								
PAVING								
STRAIGHT CURB NEW								
OLD CURB RESET								
CIRCULAR CURB								
EXCAVATION								
TOTAL 7								

DEPARTMENT OF PUBLIC WORKS  
CITY ENGINEERS OFFICE ... DIVISION OF PAVING DESIGN  
**STREET PAVING PLAN**  
**ROSEMONT 50**

DESIGNED BY: *Fuller* APPROVED: *W.A. ...*  
DRAWN BY: *A.P. ...*  
TRACED BY: *Fuller*  
CHECKED BY: *Fuller*

DESIGNED BY: *Fuller* APPROVED: *W.A. ...*  
DRAWN BY: *A.P. ...*  
TRACED BY: *Fuller*  
CHECKED BY: *Fuller*

DESIGNED BY: *Fuller* APPROVED: *W.A. ...*  
DRAWN BY: *A.P. ...*  
TRACED BY: *Fuller*  
CHECKED BY: *Fuller*



13377	133.50	13362 WK 13374
13372	133.30	PR 13374
13377	75	13374 WK 13377
13369	133.60	PR 13377
13377	133.10	13359 WK 13364
13382	133.10	PR 13364
13374	133.70	13357 WK 13369
13382	75	PR 13369
13380	133.40	13374 WK 13377
13383	133.80	13377 WK 13374
13383	225	13362 WK 13374
13423	134.30	PR 13374
13428	133.80	13377 WK 13374
13430	133.80	13374 WK 13377
13418	75	13377 WK 13374
13436	E.S. 134.10	13374 WK 13377
13420	175	13377 WK 13374
13422	133.40 W.S.	13374 WK 13377
13455	133.20	13377 WK 13374
13410	169.84	13374 WK 13377
13422	133.70	13377 WK 13374
13412	E.S. 133.70	13377 WK 13374
13440	E.S. 132.40	13377 WK 13374
13433	E.S. 133.30	13377 WK 13374
13415	E.I. 133.60	13377 WK 13374
13460	175	13377 WK 13374
13478	175	13377 WK 13374
13479	E.S. 134.60	13377 WK 13374
13470	E.S. 134.70	13377 WK 13374
13473	225	13377 WK 13374
13455	225	13377 WK 13374
13428	133.40	13377 WK 13374
13443	81/2	13377 WK 13374
13443	132.50	13377 WK 13374
13415	132.60	13377 WK 13374
13433	50	13377 WK 13374
13448	80	13377 WK 13374
13410	133.50	13377 WK 13374
13442	100	13377 WK 13374
13435	133.90	13377 WK 13374
13412	100	13377 WK 13374
13407	133.50	13377 WK 13374
13497	100	13377 WK 13374
13425	134.00	13377 WK 13374
13415	150	13377 WK 13374
13427	133.40	13377 WK 13374
13427	95.84	13377 WK 13374
13405	133.80	13377 WK 13374
13427	133.80	13377 WK 13374

REVISED WIDTH CHANGED FROM 30 FT. TO 26 FT. WIDE.

10-27-38

DESIGNED BY: *Fuller* APPROVED: *W.A. ...*  
DRAWN BY: *A.P. ...*  
TRACED BY: *Fuller*  
CHECKED BY: *Fuller*

DESIGNED BY: *Fuller* APPROVED: *W.A. ...*  
DRAWN BY: *A.P. ...*  
TRACED BY: *Fuller*  
CHECKED BY: *Fuller*

DESIGNED BY: *Fuller* APPROVED: *W.A. ...*  
DRAWN BY: *A.P. ...*  
TRACED BY: *Fuller*  
CHECKED BY: *Fuller*