

# DEPARTMENT OF PUBLIC WORKS DETROIT

## CITY ENGINEER'S OFFICE DIVISION OF PAVING DESIGN

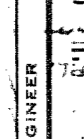
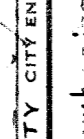
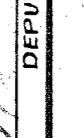
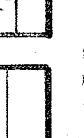
### STREET PAVING PLAN

### RIVERVIEW

FROM **550' S. OF S.P.L. OF VERDUN**  
TO **45' N. OF N.P.L. OF FRISBEE**

LEVEL OF PAVEMENT B 6 B 8  
8" UNIFORM AT STREET INTERSECTIONS EXCEPT AS NOTED

CONTRACT APPROVED BY   
DEPUTY CITY ENGINEER

DESIGNED BY   
DRAWN BY   
TRACED BY   
CHECKED BY   
APPROVED

ENGINEER OF STREETS  
DEPUTY CITY ENGINEER

ASSIGN. NO. **378 B.25**  
PETITION NO. **---**  
SHEET **1** OF **1** SHEETS

INDEX TO TOPO NO. **71 123**  
RECORD NO. **---**

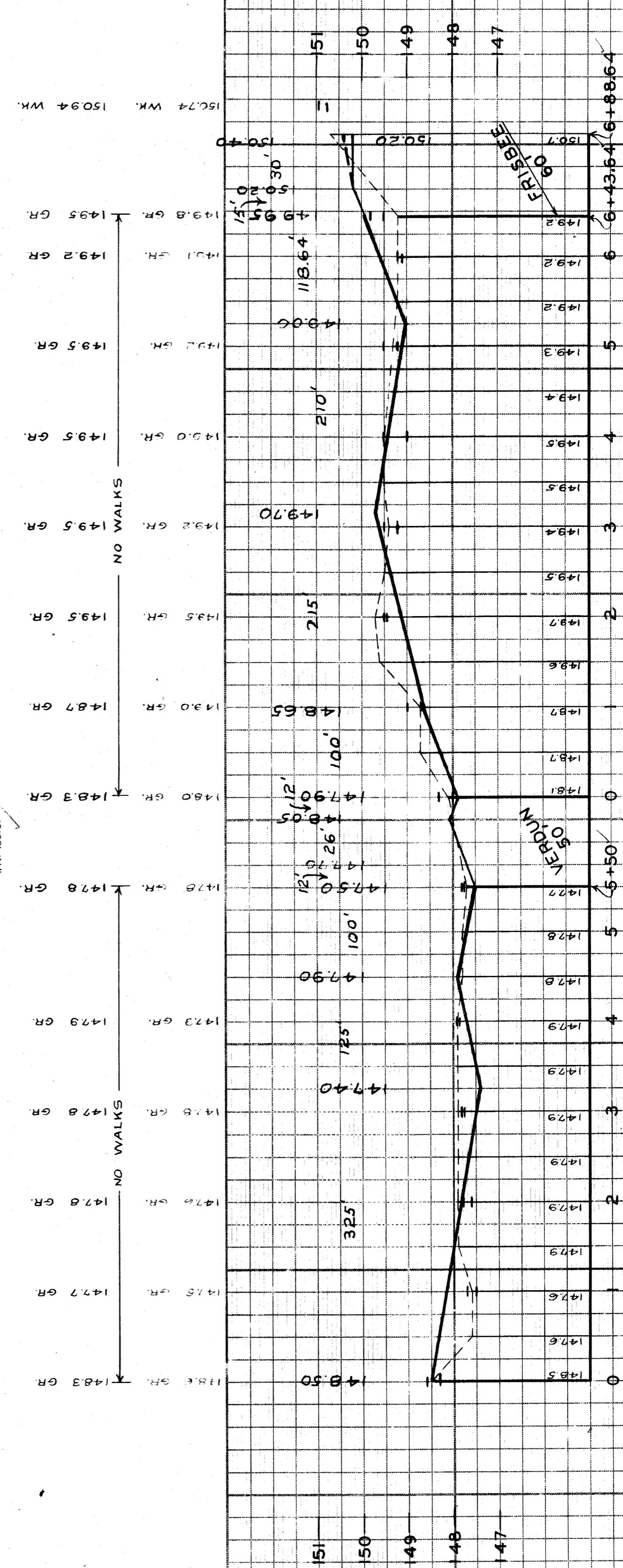
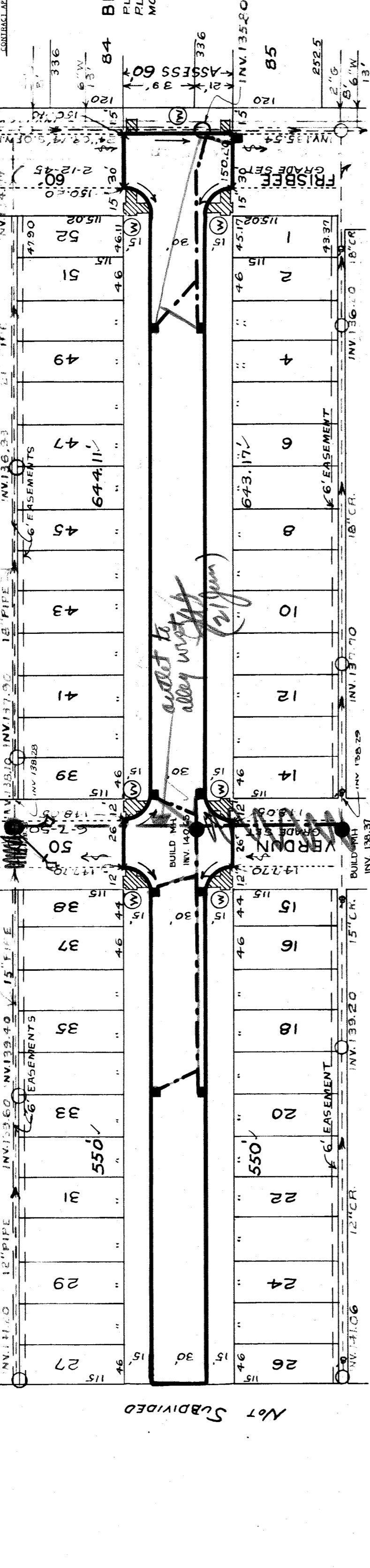
NAME OF STREET

FROM **550' S. OF S.P.L. OF VERDUN**  
TO **45' N. OF N.P.L. OF FRISBEE**

BENCH MARKS:  
PLBM # 123-254 NW COR. FRISBEE & TELEGRAPH  
PLBM # 123-254 A NW COR. SHIAWASSEE & FRISBEE  
MON. S.E. COR. RIVERVIEW & VERDUN

ELEVATION  
149.956  
148.873  
148.01

SEWER REVISIONS	SUPPLEMENTARY DETAILS	C-324A	C-390	C-587	C-739B
		C-325	C-524	C-733	C-938
NOTE:		PLAN SCALE DISTORTED			
BEFORE STARTING CONSTRUCTION CONTRACTOR MUST CHECK WITH UTILITIES FOR LOCATIONS OF EXISTING STRUCTURES WHETHER OR NOT INDICATED ON PLANS.		LOTS & ALLEYS 1" = 100'			
DRAINAGE COMPLETED		STREET WIDTHS 1" = 50'			
PAVING COMPLETED		SEWER-12" LIN. FT.			



Not Subdivided