

DEPARTMENT OF PUBLIC WORKS
CITY ENGINEER'S OFFICE --- DIVISION OF PAVING DESIGN
STREET PAVING PLAN

CARD NO. 0
 NAME OF STREET: RIVERVIEW 60' WD.
 FROM: DEHNER
 TO: MC NICHOLS

INDEX TO NO. 73 121
 RECORD NO. 0

INDEX NO.	TOPO NO.	COMPUTED	CITY
73	121	940.10	
		15	
		975.10	

PLAN	W.E.	PROFILE	W.E.	COMPUTED
CHECKED		CHECKED		

LOT	LENGTH	LOT	LENGTH	LOT	LENGTH
1	120.20	2	30	3	975.10
TOTAL					

QUANTITIES	QUANTITIES	QUANTITIES	QUANTITIES
EXCAVATION	STRAIGHT CURB NEW	OLD CURB RESET	CIRCULAR CURB

CIRCLES	ARC	REG.
AT NO.	RADIUS	TANG.

LOT	CITY	LOT	CITY	LOT	CITY

HOR. SCALE	1" = 100'	BOOK	1186	PAGE	87
VER. SCALE	1" = 2'	DATE	B-2-38		

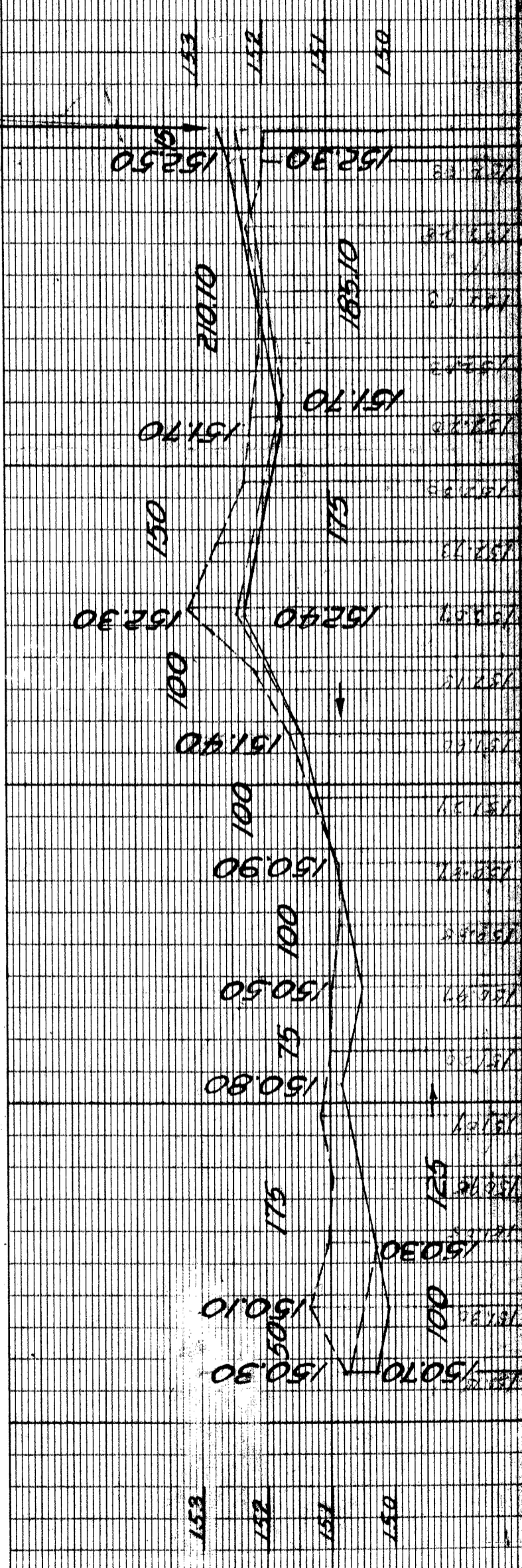
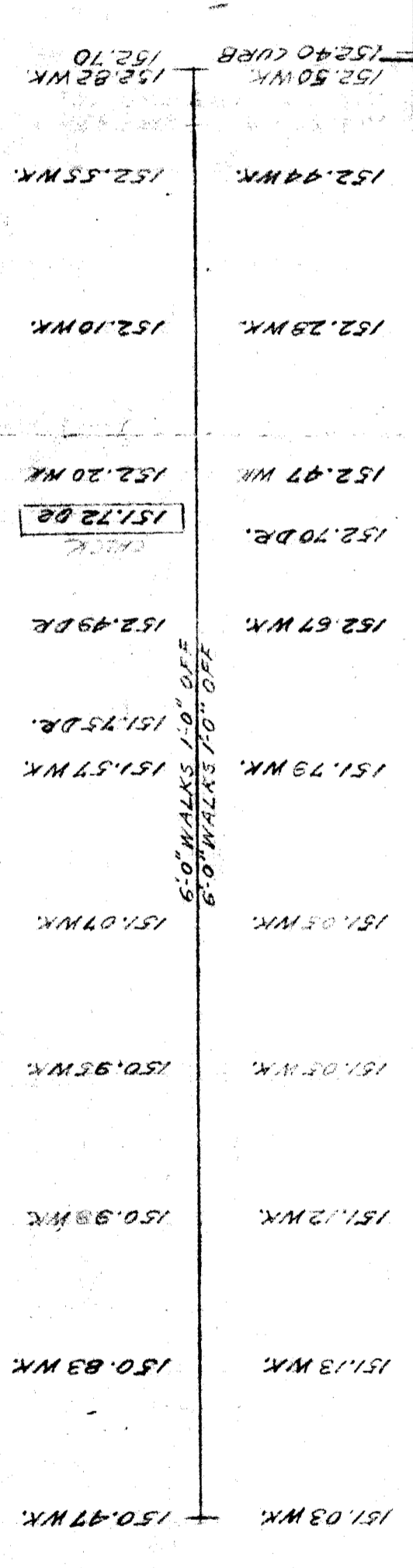
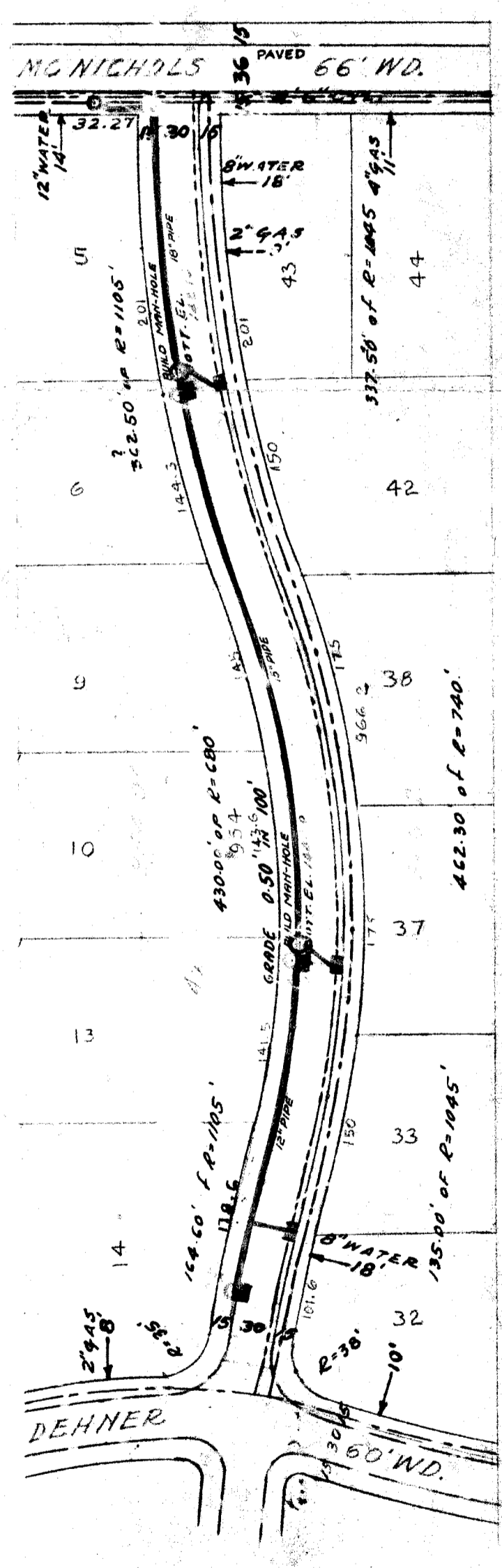
DESIGNED BY	APPROVED
J. Guillemy	

DRAWN BY	ENGINEER OF STREETS
W. Swallow	

TRACED BY	ENGINEER OF STREETS
J. Guillemy	

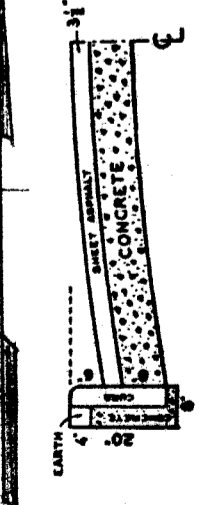
CHECKED BY	ASST. CITY ENGINEER
Martin R. Fisher	

TYPE OF PAVEMENT: _____ WIDTH: _____

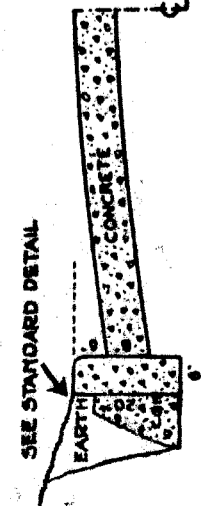


B.P. TO WATER BOARD 9-20-38

CROSS SECTIONS



SHEET ASPHALT ON CONCRETE WITH STONE CURB



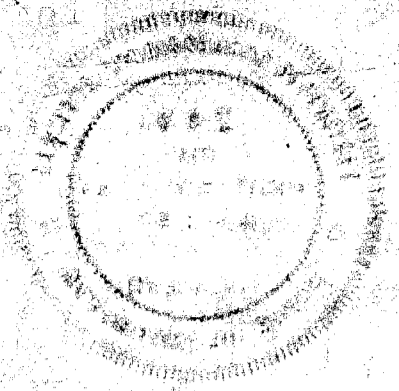
ONE COURSE CONCRETE WITH CONCRETE CURB

FIELD ENGINEER REPORTS THAT RIVERVIEW SOUTH OF DEHNER IS NOT OPENED ON THE GROUND AND THAT THERE ARE NO HOUSES

EXISTING POOLS & BASINS
 NEW

- ENCH MARKS

* SPIKE IN N.S. OF LIGHT POLE N.S. OF DEHNER @ #23.850
 A.R.O. ON HYD. M.E. COR. DEHNER & RIVERVIEW 151.70
 A.R.O. ON HYD. E. SIDE OF DEHNER @ 80'S. OF MC NICHOLS 151.23
 151.76



10-14-38 WATER MAIN TO BE LOWERED

JOB-NO - D-2070