

DEPARTMENT OF PUBLIC WORKS
CITY ENGINEERS' OFFICE - DIVISION OF PAVING DESIGN
STREET PAVING PLAN

PREVOST
N. P.L. of KRAMER AVE.
N. P.L. of WESTFIELD AVE.

ASSIGN NO. 217-25
SHEET 1 OF 1 SHEETS
PETITION NO. _____

SEWER	REVISIONS	DATE
C-234A	C-234	11-12-45
C-235	C-234	11-27-45
C-236A	C-236A	11-27-45
C-237	C-238	11-27-45

NOTE:
BEFORE STARTING CONSTRUCTION CONTRACTOR MUST CHECK WITH UTILITIES FOR LOCATIONS OF EXISTING STRUCTURES WHETHER OR NOT INDICATED ON PLANS

PLAN SCALE DISTORTED
LOTS & ALLEYS 1"=100'
STREET WIDTHS 1"=50'

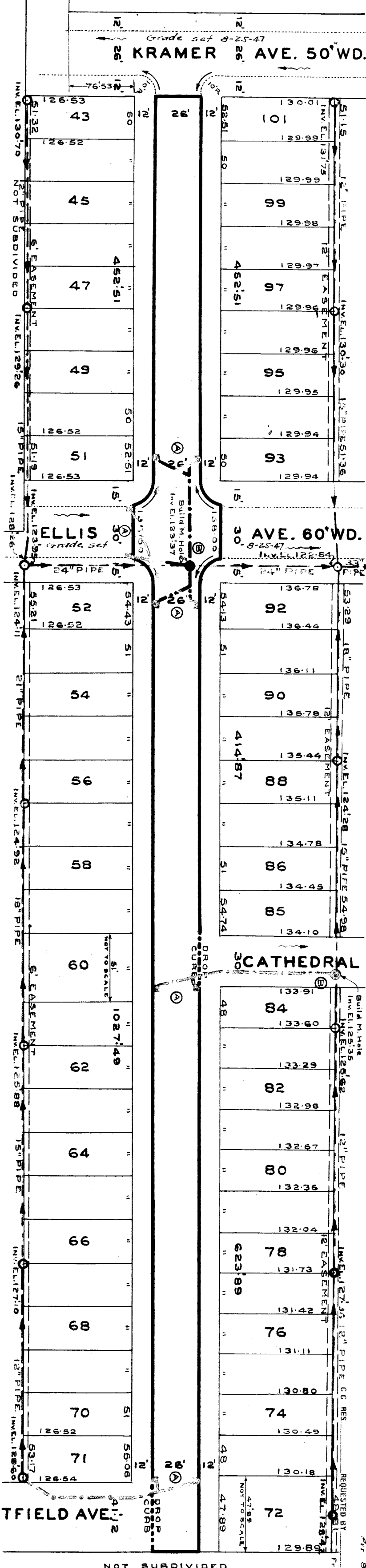
DRAINAGE COMPLETED
PAVING COMPLETED

QUANTITIES	ESTIMATED	FINAL
EXCAVATION CU YDS.	LOTS	CITY
NEW CURB LIN FT.	LOTS	CITY
PAVING SQ. YDS.	LOTS	CITY
MANHOLES ADJUST	LOTS	CITY
MANHOLES CONSTRUCT	LOTS	CITY
SEWER BASINS CONSTRUCT	LOTS	CITY
SEWER 12" LIN FT.	LOTS	CITY
SEWER 18" LIN FT.	LOTS	CITY

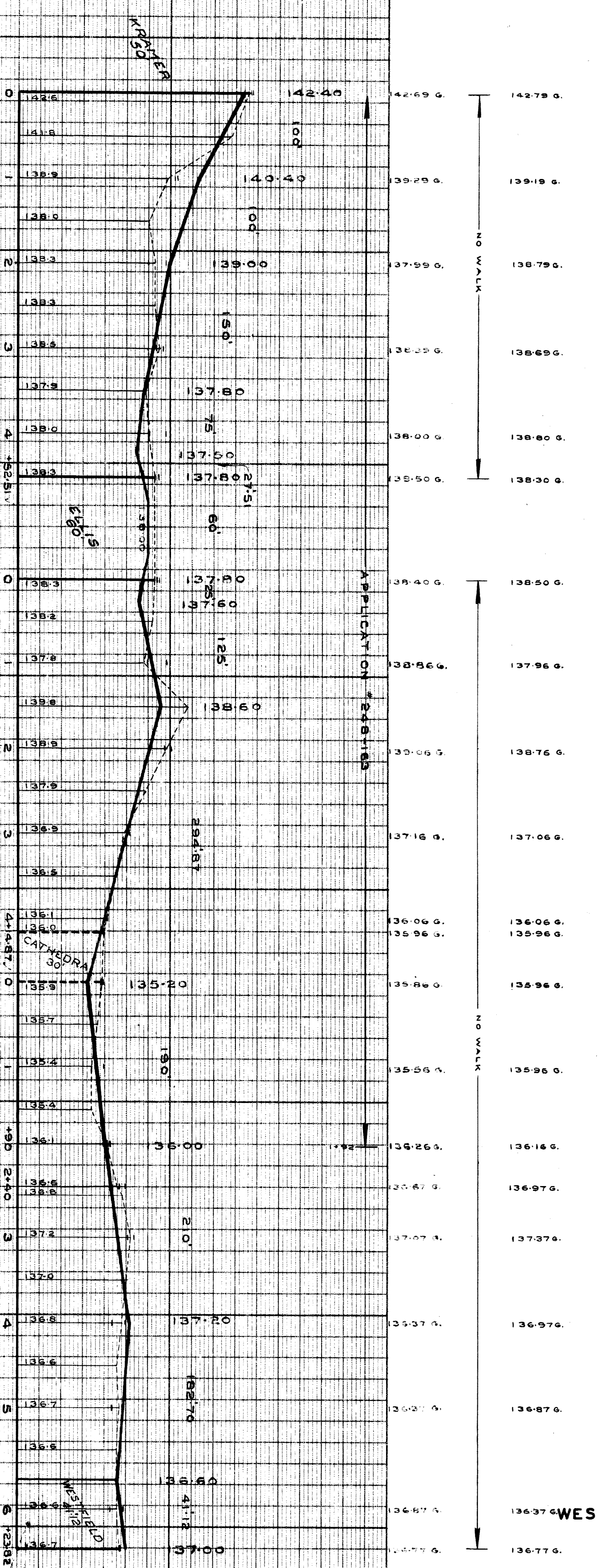
HOR. SCALE 1"=100'	ADD. 1640	PAGE 18
VER. SCALE 1"=4'	DATE	11-14-45
PLAN	DATE DRAWING	11-27-45
CHECKED	REVISION	NO.
LOT 2L	2 971.27	485.64
CITY 2L	191.12	95.56
TOTAL 2L	162.39	1581.20

DESIGNED BY L.G. VANTUYL.
DRAWN BY L.G. VANTUYL.
CHECKED BY
APPROVED
ENGINEER OF STREETS
MARTIN R. JACKSON
ASSIST. CITY ENGINEER

CARD NO. _____
RECORD NO. 69 100
FRONT STREET
8:6:8
ONE COURSE CONCRETE INTER-LOCK CURBS
TYPE OF PAVEMENT
DATE 11-12-45
Application # 248-163
From N.P.L. of KRAMER to 192' N. of N.P.L. of CATHEDRAL.
Trickhorn Const. Co.



NOTE -
ALL CURBS WITHIN STREET INTERSECTIONS TO BE SEPARATE-TYPE II OR INTEGRAL-TYPE III. AT CONSTRUCTION STD. 15\"/>



NOTE -
ALL CURBS WITHIN STREET INTERSECTIONS TO BE SEPARATE-TYPE II OR INTEGRAL-TYPE III. AT CONSTRUCTION STD. 15\"/>