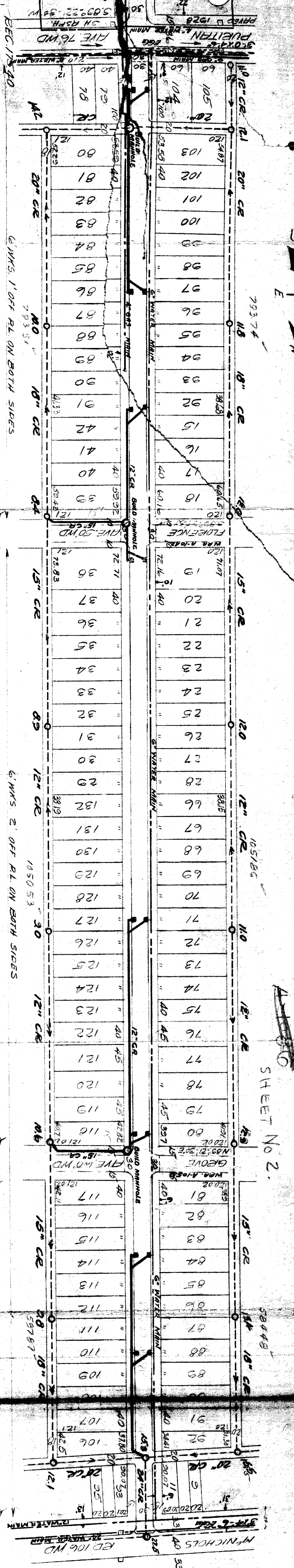


PREST AVE. 60' WD
FROM N.L. FENKELL TO S.C. MCNICHOLES

SHEET NO. 2.

23-47
23-17
23-57



0	175.53	50	175.50	175.56 CURB 175.54	175.74 SET. 175.72	175.58 MK	175.75 MK
1	175.73			176.01	176.38 "		176.08 "
	176.11			176.28	176.68 "		176.38 "
2	176.28	275		176.76	177.08 "		176.68 "
	176.76		176.60	176.76	177.32 "		176.68 "
3	176.76		75	176.94	177.32 "		176.82 "
	176.78		100	177.07	177.22 "		176.82 "
4	176.94		100	176.82	177.32 "		176.62 "
	176.82		193.62	176.45	177.02 "		176.82 "
5	176.82		177.00	176.62	177.12 MK		177.32 MK
	176.65		127.30	176.60	177.71 MK		177.61 MK
6	176.65		180	177.36	178.31 "		178.21 "
	176.55		178.40	177.61	178.24	178.81 "	178.81 "
7	176.55		100	177.61	178.24	178.81 "	178.81 "
	175.92		178.80	178.31	178.59	179.41 "	179.01 "
8	175.92		100	178.31	178.79	179.41 "	179.01 "
	176.60		179.70	178.44	179.86	180.21 "	180.21 "
9	176.60		125	178.44	179.34	180.39 "	180.59 "
	177.36		180.20	179.86	180.27	180.39 "	180.59 "
10	177.36		125	180.09	180.27	180.39 "	180.59 "
	177.61		180.70	180.39	180.37	180.39 "	180.59 "
11	177.61		250	180.59	180.14	180.39 "	180.59 "
	177.89		180.88	180.27	180.27	180.01 "	180.81 "
12	177.89		180.70	180.27	180.57	180.89 "	180.29 "
	178.31		126.20	180.57	180.88	180.78 "	180.48 "
13	178.31		180.10	181.22	180.66	180.78 "	180.48 "
	178.24		180.20	180.88	180.41	180.88 MK	180.88 MK
14	178.24		60	180.66	180.41	180.88 MK	180.88 MK
	178.59		179.90	180.41	179.47	180.38 MK	179.98 MK
15	178.59		125	180.41	179.47	180.38 MK	179.98 MK
	178.79		179.40	180.22	179.64	180.14 "	179.84 "
16	178.79		75	180.22	179.72	180.14 "	179.84 "
	178.44		179.70	179.64	179.64	180.14 "	179.84 "
17	178.44		100	179.64	179.02	179.64 "	179.54 "
	179.86		100	179.02	178.32	179.64 "	179.54 "
18	179.86		180.20	178.32	178.17	179.30 "	180.74 "
	179.34		180.64	178.17	178.77	179.30 "	180.74 "
19	179.34		181.00	180.64	179.94	181.24 MK	181.24 MK
	180.09		35	180.32	180.32	181.24 MK	181.24 MK
20	180.09		181.00	180.32	180.39	181.24 MK	181.24 MK
	180.39			180.39	181.22 CURB 181.18		

FENCH MEKENS
SFK IN W.S. OF 30' ELM S.E. COR. OF GREENFIELD & 6th N.W. ED
" " 5.5 " 36' OAK S.S. OF 6th W. ED TO E. OF PREST
TOP OF LOW PART OF 5th N.W. S. LOT 115 ON E.W.K. OF PREST 85' N. OF GROVE
" " 5th S. S. LOT 120 ON E.W.K. OF PREST 135' S. OF GROVE
" " " 5th N. S. 23' IN E.W.K. ON " 432' N. " FLORENCE
SFK IN FOUR PALE SW COR. OF PREST & FLORENCE
" " LIGHT PALE S.W. COR. OF PREST & PUEITAN

ENGINE REC
BOOK A PAGE 95
CHD BY 11-1-1915 MK.

SCALE 1" = 100'

DATE 11-10-31

PLANNED BY W. H. McNICHOLES

DESIGNED BY W. H. McNICHOLES

DRAWN BY W. H. McNICHOLES

CHECKED BY W. H. McNICHOLES

APPROVED BY W. H. McNICHOLES

W. H. McNICHOLES

CITY

D-2002