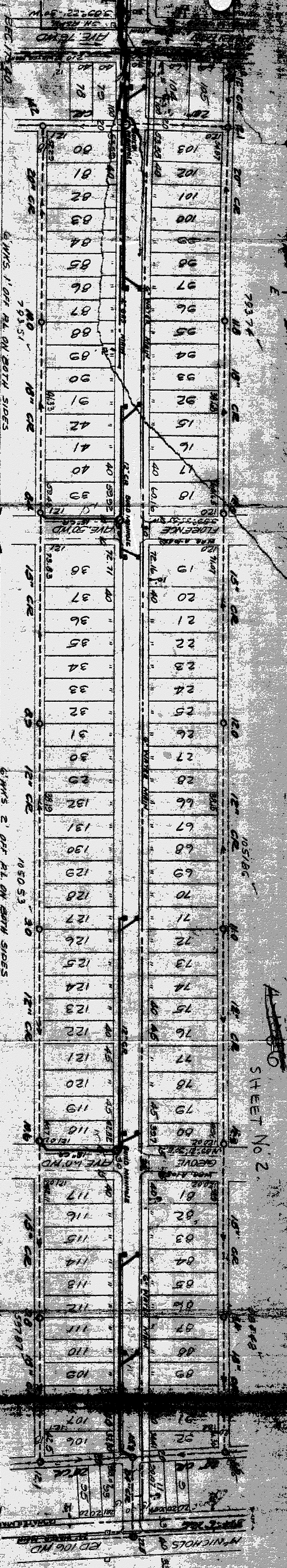


SHEET No. 2.

FROM THE FIELD BOOKS OF S. C. NICHOLS



| Station | Left Side Elevation | Right Side Elevation | Notes |
|---------|---------------------|----------------------|--------------------|
| 0 | 175.53 | 175.56 CURB 175.54 | 175.74 FEET 175.72 |
| | 175.73 | 175.98 MK 175.78 MK | |
| 1 | 176.01 | 176.36 " | 176.08 " |
| | 176.11 | | |
| 2 | 176.20 | 176.68 " | 176.38 " |
| | 176.76 | | |
| 3 | 176.76 | 177.06 " | 176.68 " |
| | 176.70 | | |
| 4 | 176.94 | 177.32 " | 176.82 " |
| | 177.07 | | |
| 5 | 176.82 | 177.22 " | 176.82 " |
| | 176.45 | | |
| 6 | 176.62 | 177.32 " | 176.62 " |
| | 176.65 | | |
| 7 | 176.55 | 177.02 " | 176.82 " |
| | 175.92 | | |
| | 176.60 | 177.12 MK | 177.32 MK |
| 0 | 177.36 | 177.41 MK | 177.61 MK |
| | 177.61 | | |
| 1 | 177.89 | 178.31 " | 178.21 " |
| | 178.31 | | |
| 2 | 178.24 | 178.81 " | 178.81 " |
| | 178.59 | | |
| 3 | 178.79 | 179.41 " | 179.01 " |
| | 179.44 | | |
| 4 | 179.86 | 180.21 " | 180.21 " |
| | 179.94 | | |
| 5 | 180.09 | 180.39 " | 180.59 " |
| | 180.39 | | |
| 6 | 180.27 | 180.39 " | 180.59 " |
| | 180.37 | | |
| 7 | 180.14 | 180.39 " | 180.59 " |
| | 180.27 | | |
| 8 | 180.27 | 180.69 " | 180.89 " |
| | 180.57 | | |
| 9 | 181.22 | 180.89 " | 180.89 " |
| | 180.88 | | |
| 10 | 180.66 | 180.78 " | 180.48 " |
| | 180.41 | 180.88 MK | 180.28 MK |
| 0 | 180.01 | 180.38 MK | 179.98 MK |
| | 179.47 | | |
| 1 | 179.64 | 180.14 " | 179.84 " |
| | 179.72 | | |
| 2 | 179.64 | 180.14 " | 179.84 " |
| | 179.02 | | |
| 3 | 179.32 | 179.64 " | 179.54 " |
| | 179.17 | | |
| 4 | 179.77 | | |
| 5 | 179.34 | 180.64 " | 180.64 " |
| | 180.32 | | |
| | 180.39 | 181.24 MK | 181.24 MK |
| | | 181.26 CURB | 181.18 |

| LOT | AREA | CITY |
|-------|--------|--------|
| 1 | 179.89 | 179.89 |
| 2 | 179.89 | 179.89 |
| 3 | 179.89 | 179.89 |
| 4 | 179.89 | 179.89 |
| 5 | 179.89 | 179.89 |
| 6 | 179.89 | 179.89 |
| 7 | 179.89 | 179.89 |
| 8 | 179.89 | 179.89 |
| 9 | 179.89 | 179.89 |
| 10 | 179.89 | 179.89 |
| TOTAL | 179.89 | 179.89 |

SEWER REC.
BOOK 4 PAGE 85
CARD BY J. J. [Signature]

BENCH MARKS
SPK IN N.W. COR. OF 30" ELM S.E. COR. OF GREENFIELD & 6th N. ED
" " " 36" D.M. 5.5. OF 6th N. ED. TO E. OF PREST
TOP OF LOW BENCH OF 5" N.W. 5.5. LOT 145 ON E. MK. OF PREST 85' N. OF GEORIE
" " " 2.5.5. LOT 120 ON E. MK. OF PREST 135' S. OF GEORIE
" " " 3. N.W. 5. " 29 ON E. MK. ON " 432' N. " FLORENCE
SPK IN P.W. PILE 5th COR. OF PREST & FLORENCE
" " LIGHT POLE 5th COR. OF PREST & FURSTON

D-2002

| | |
|-------------|-------------------|
| SCALE | 1" = 10' |
| DATE | 10/10/01 |
| BY | J. J. [Signature] |
| CHECKED BY | [Signature] |
| APPROVED BY | [Signature] |

| | | |
|-------|--------|--------|
| LOT | 179.89 | 179.89 |
| CITY | 179.89 | 179.89 |
| TOTAL | 179.89 | 179.89 |