

DEPARTMENT OF PUBLIC WORKS DETROIT  
 CITY ENGINEER'S OFFICE - DIVISION OF PAVING DESIGN  
**STREET PAVING PLAN**

**PRAIRIE**  
 N.P.L. OF OUTER DRIVE  
 15' N. OF S.P.L. OF PEMBROKE

7494

CARD NO. 61 88  
 SHEET NO. 1  
 TYPE OF PAVEMENT  
 WIDTH 30' & 26'

DESIGNED BY <i>P. MATSUMURA</i>	ENGINEER OF STREETS
DRAWN BY	ASSISTANT
TRACED BY	
CHECKED BY 5.5	
APPROVED R3	

HOR. SCALE 1" = 50'	VERT. SCALE 1" = 2'	DATE 4-18-45
CHECKED 5.5	CITY 130	TOTAL 249565
LOT 2	LENGTH 65	WIDTH 65
CITY 130	LENGTH 65	WIDTH 65
TOTAL 249565		

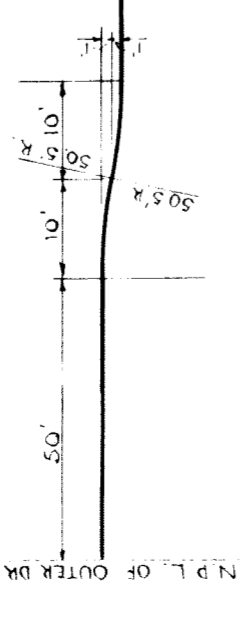
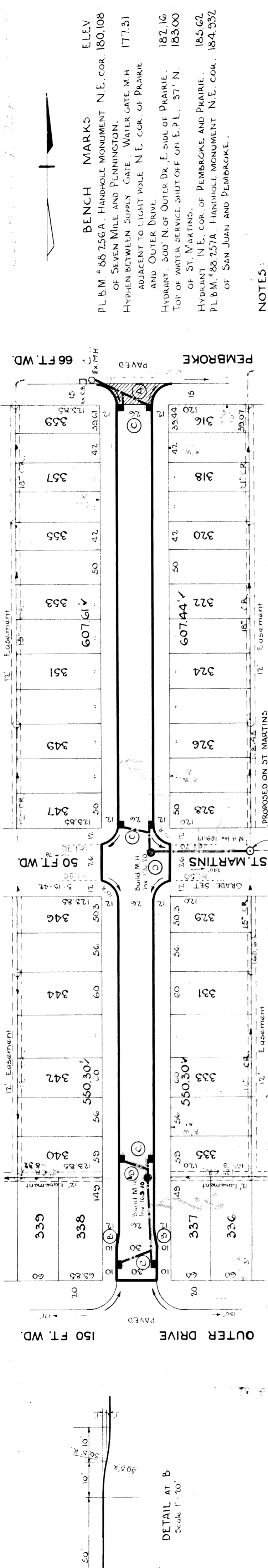
QUANTITIES	ESTIMATED	FINAL
EXCAVATION CU YDS		
NEW CURB LIN FT		
PAVING SQ YDS		
SIDEWALK SQ FT		
MANHOLES ADJUST		
CONSTRUCT		
BASINS ADJUST		
CONSTRUCT		
SEWERS 12" LIN FT		
SEWERS 18" LIN FT		

NOTE: BEFORE STARTING CONSTRUCTION CONTRACTOR MUST CHECK WITH UTILITIES FOR LOCATIONS OF EXISTING STRUCTURES WHETHER OR NOT INDICATED ON PLANS.

PLAN SCALE DISTORTED  
 LOTS & ALLEYS 1" = 100'  
 STREET WIDTHS 1" = 50'

DRAINAGE COMPLETED  
 PAVING COMPLETED

SEWER	
REVISIONS	
SUPPLEMENTARY DETAILS	
DRAWING NO.	



NOTES:  
 AT (A) CONSTRUCT RETURNS AT PEMBROKE WITH 2" CONC. BASE AND 3" ASPHALT TOP 2" SEE DETAIL SHEET C-371.  
 AT (C) CONSTRUCT 8" STD 18" 12" Y BASINS COMPLETE AND CONNECT TO OUTLETS AS SHOWN.  
 AT (D) CONSTRUCT 7" STD. MANHOLES COMPLETE AND CONNECT TO OUTLETS AS SHOWN.

BENCH MARKS ELEV  
 P.L.M. # 88.256A. HANDHOLE MONUMENT N.E. COR. 180.108 OF SEVEN MILE AND PENNINGTON.  
 HYDRANT BETWEEN SUPPLY GATE. WATER GATE M.H. ADJACENT TO LIGHT POLE N.E. COR. OF PRAIRIE AND OUTER DRIVE. 177.31  
 HYDRANT. 300' N. OF OUTER DR. E. SIDE OF PRAIRIE. 182.16  
 TOP OF WATER SERVICE SHUT-OFF ON E.P.L. 37' N. OF ST. MARTINS. 183.00  
 HYDRANT N.E. COR. OF PEMBROKE AND PRAIRIE. 185.62  
 P.L.M. # 88.257A. HANDHOLE MONUMENT N.E. COR. OF SAN JUAN AND PEMBROKE. 184.932

