

DEPARTMENT OF PUBLIC WORKS DETROIT
CITY ENGINEER'S OFFICE --- DIVISION OF PAVING DESIGN
STREET PAVING PLAN

NAME OF STREET: **PLAINVIEW**
 FROM: **N.P.L. 7 MILE ROAD**
 TO: **S.P.L. VASSAR**
 TYPE OF PAVEMENT: _____
 WIDTH: **30.136**

DESIGNED BY: *Keen*
 DRAWN BY: *G.B. Youatt*
 TRACED BY: _____
 CHECKED BY: *Sentinel*
 APPROVED: *J.L. Barton*
W. Wallace
 ENGINEER OF STREETS
Martha R. Ziehn
 ASSIST. CITY ENGINEER

BOOK 1520, PAGE 67
 DATE **Oct 24 1945**
 PLAN: G.A.Y. COMPUTED
 CHECKED: S.S. GRADE R.R.R. CHECKED
 S.P.S. 228875 LENGTH 114438
 S.P.S. 160100 LENGTH 80100
 TOTAL S.P.S. 244875 LENGTH 122438

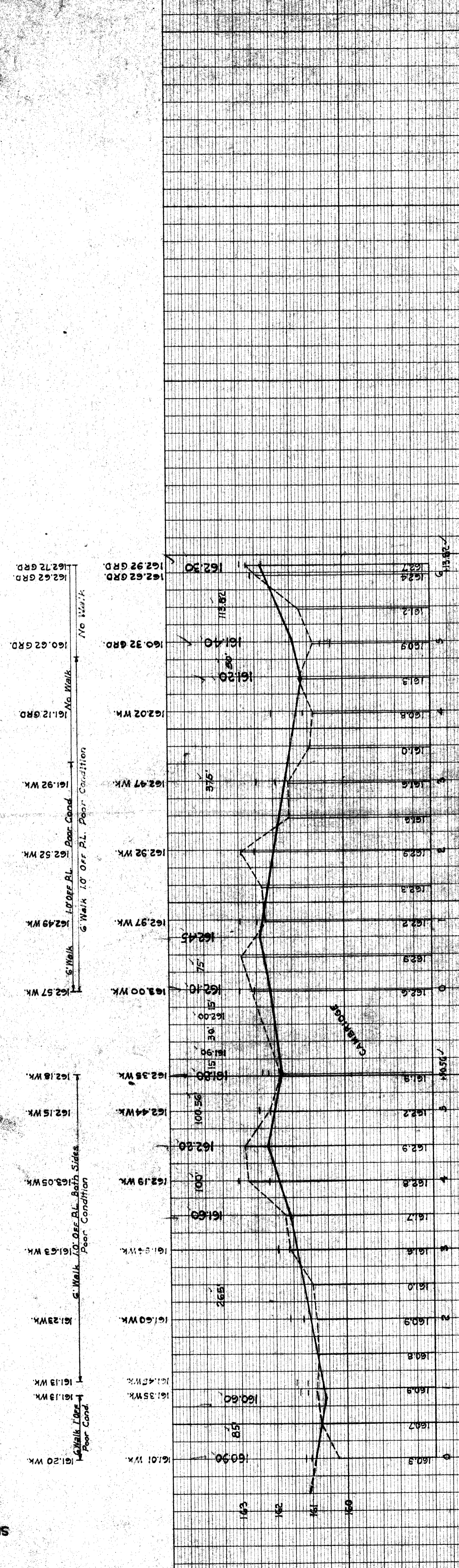
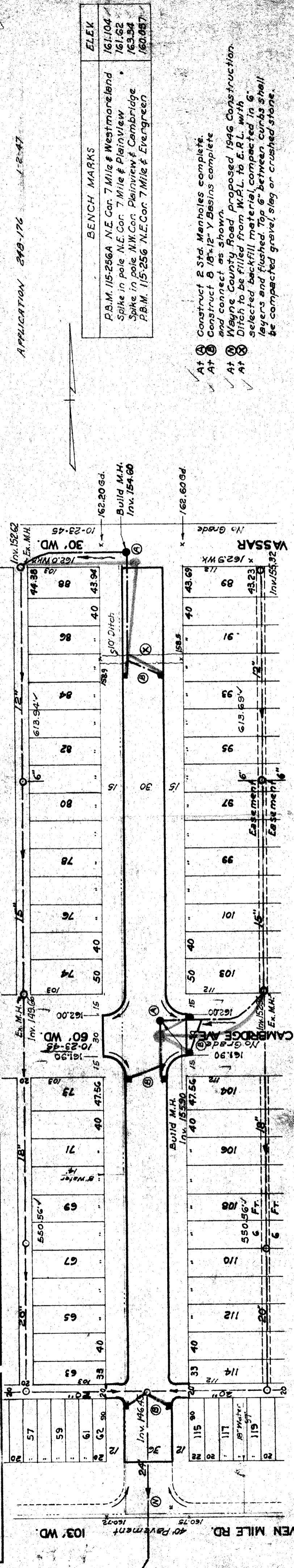
QUANTITIES		ESTIMATED		FINAL	
EXCAVATION	CU. YDS.	LOTS	CITY	LOTS	CITY
NEW CURB	LN. FT.				
PAVING	SQ. FT.				
SIDEWALK	SQ. FT.				
MANHOLES	ADJUST				
CONSTRUCT					
BASINS	ADJUST				
CONSTRUCT					
SEWERS-12"	LN. FT.				
SEWERS-18"	LN. FT.				

NOTE: BEFORE STARTING CONSTRUCTION CONTRACTOR MUST CHECK WITH UTILITIES FOR LOCATIONS OF EXISTING STRUCTURES WHETHER OR NOT INDICATED ON PLANS

PLAN SCALE DISTORTED
 LOTS & ALLEYS 1" = 100'
 STREET WIDTHS 1" = 50'

DRAINAGE COMPLETED
 PAVING COMPLETED

SEWER *11027-111*
 REVISIONS
 SUPPLEMENTARY DETAILS
 DRAWING NO.



11027-111