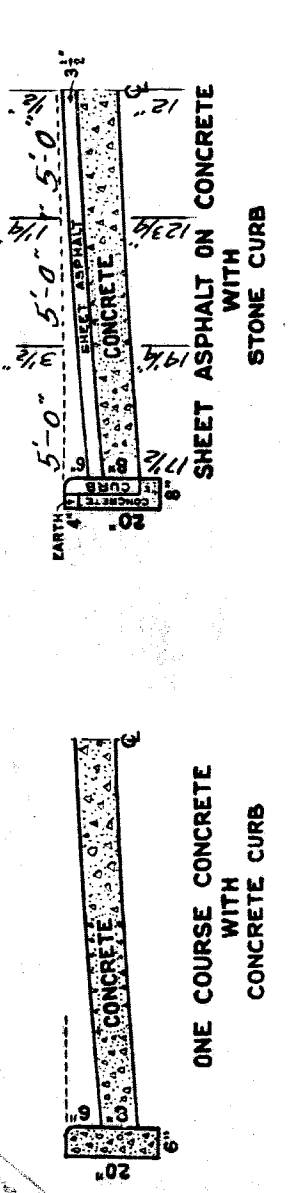


CROSS SECTIONS



ONE COURSE CONCRETE WITH CONCRETE CURB

SHEET ASPHALT ON CONCRETE WITH CONCRETE CURB

CIRCLES		QUANTITIES		LOTS		CITY		LOTS		CITY		PLAN		CHECKED		RECORD NO.	
AT NO.	Rad.	Excavation	Excavation	Excavation	Excavation	Excavation	Excavation	Excavation	Excavation	Excavation	Excavation	Excavation	Excavation	Excavation	Excavation	Excavation	Excavation
12	90°	4'	6.25	3.43	1896	429	100'	10'	10'	10'	10'	10'	10'	10'	10'	10'	10'
12	90°	4'	6.25	3.43	2115	382	100'	10'	10'	10'	10'	10'	10'	10'	10'	10'	10'
12	90°	4'	6.25	3.43	3525	878	100'	10'	10'	10'	10'	10'	10'	10'	10'	10'	10'
12	90°	4'	6.25	3.43	3525	878	100'	10'	10'	10'	10'	10'	10'	10'	10'	10'	10'

DEPARTMENT OF PUBLIC WORKS DETROIT MICH.
CITY ENGINEER'S OFFICE - DIVISION OF PAVING DESIGN

STREET PAVING PLAN

PLAINVIEW AVE.

NAME OF STREET
FROM **N.L. W. CHICAGO**
TO **N.L. OF LOTS 192 - 247**

TYPE OF PAVEMENT **3 1/2" SH. ASPH. ON 6" CONC. BASE** ONE COURSE

30 FEET WIDE

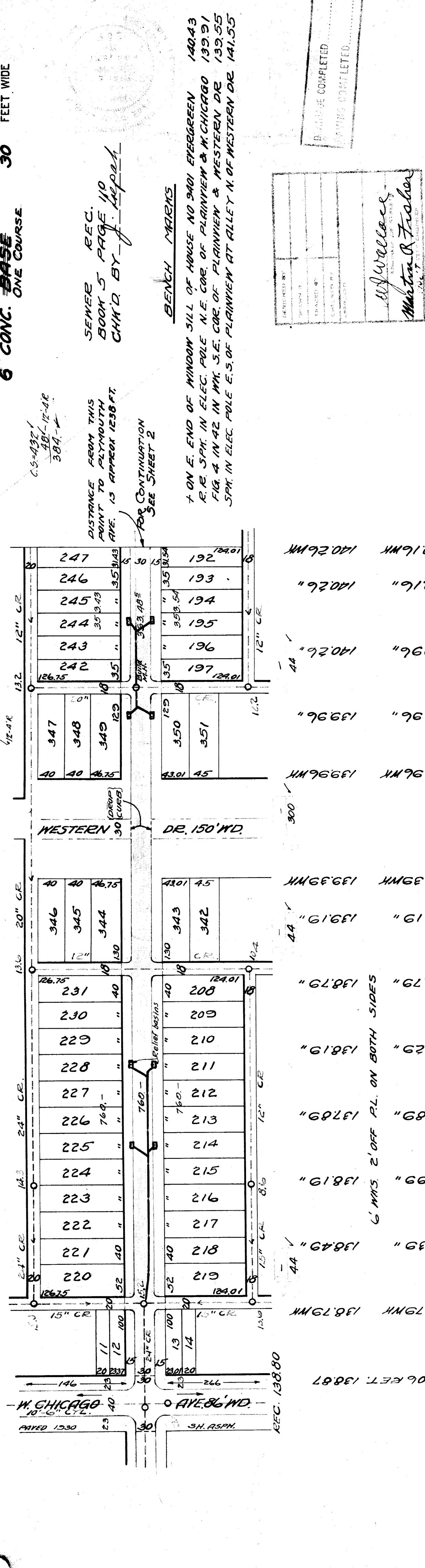
RECORD NO. **300**

DATE **4-1-31**

BLK. **697** P. **66**

NO. OF SHEETS **2**

SHEET NUMBER **1**



LOT NO.	AREA	PERIMETER	AREA	PERIMETER	AREA	PERIMETER	AREA	PERIMETER
222	52	124.01	52	124.01	52	124.01	52	124.01
223	40	124.01	40	124.01	40	124.01	40	124.01
224	40	124.01	40	124.01	40	124.01	40	124.01
225	40	124.01	40	124.01	40	124.01	40	124.01
226	40	124.01	40	124.01	40	124.01	40	124.01
227	40	124.01	40	124.01	40	124.01	40	124.01
228	40	124.01	40	124.01	40	124.01	40	124.01
229	40	124.01	40	124.01	40	124.01	40	124.01
230	40	124.01	40	124.01	40	124.01	40	124.01
231	40	124.01	40	124.01	40	124.01	40	124.01
242	35	124.01	35	124.01	35	124.01	35	124.01
243	35	124.01	35	124.01	35	124.01	35	124.01
244	35	124.01	35	124.01	35	124.01	35	124.01
245	35	124.01	35	124.01	35	124.01	35	124.01
246	35	124.01	35	124.01	35	124.01	35	124.01
247	35	124.01	35	124.01	35	124.01	35	124.01
342	45	139.6	45	139.6	45	139.6	45	139.6
343	45	139.6	45	139.6	45	139.6	45	139.6
344	46.75	139.6	46.75	139.6	46.75	139.6	46.75	139.6
345	40	139.6	40	139.6	40	139.6	40	139.6
346	40	139.6	40	139.6	40	139.6	40	139.6
347	40	139.6	40	139.6	40	139.6	40	139.6
348	40	139.6	40	139.6	40	139.6	40	139.6
349	46.75	139.6	46.75	139.6	46.75	139.6	46.75	139.6
350	45	139.6	45	139.6	45	139.6	45	139.6
351	45	139.6	45	139.6	45	139.6	45	139.6
352	45	139.6	45	139.6	45	139.6	45	139.6
353	45	139.6	45	139.6	45	139.6	45	139.6
354	45	139.6	45	139.6	45	139.6	45	139.6
355	45	139.6	45	139.6	45	139.6	45	139.6
356	45	139.6	45	139.6	45	139.6	45	139.6
357	45	139.6	45	139.6	45	139.6	45	139.6
358	45	139.6	45	139.6	45	139.6	45	139.6
359	45	139.6	45	139.6	45	139.6	45	139.6
360	45	139.6	45	139.6	45	139.6	45	139.6