

**DEPARTMENT OF PUBLIC WORKS**  
 CITY ENGINEER'S OFFICE --- DIVISION OF PAVING DESIGN  
**STREET PAVING PLAN**

CARD NO. 0  
 INDEX NO. **76** TOPO NO. **108**  
 RECORD NO. 0

NAME OF STREET. **PLAINVIEW AVE.**  
 FROM **KIRKWOOD**  
 TO **PAUL**  
 TYPE OF PAVEMENT \_\_\_\_\_  
 WIDTH \_\_\_\_\_

NUMBER OF SHEETS **1**  
 SHEET NO. **1**

DESIGNED BY *W. R. Fisher*  
 DRAWN BY *R. R. Johnson*  
 TRACED BY \_\_\_\_\_  
 CHECKED BY \_\_\_\_\_  
 APPROVED *W. R. Fisher*  
 ENGINEER OF STREETS  
*Martin R. Fisher*  
 ASSIST. CITY ENGINEER

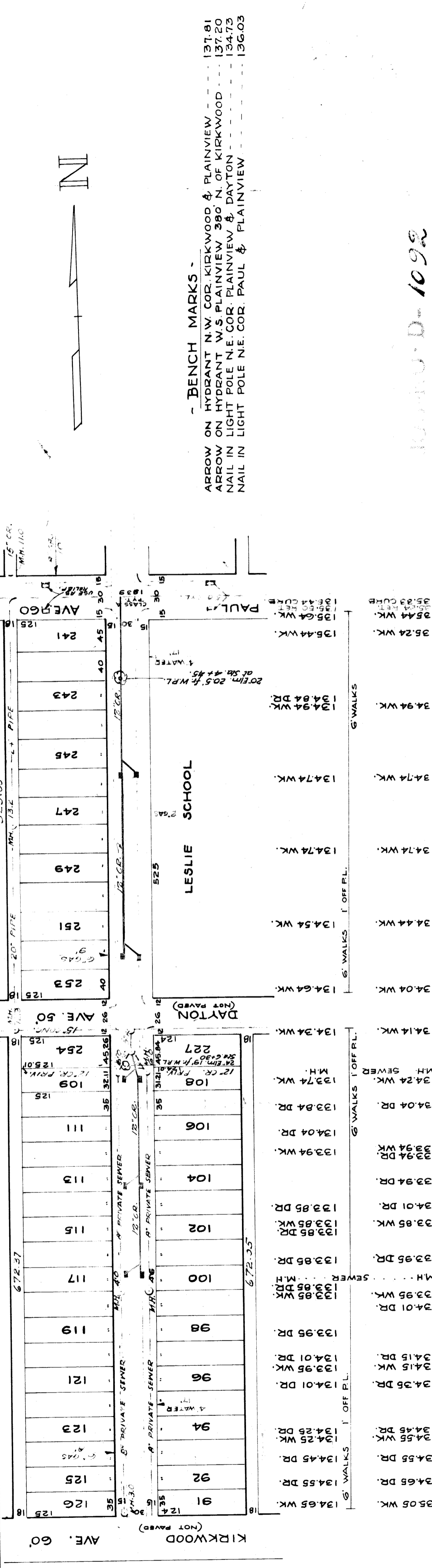
BOOK 1332 PAGE 63  
 DATE 1-21-41

PLAN	PROFILE	COMPUTED
<i>PLAN</i>	<i>PROFILE</i>	<i>COMPUTED</i>
CHECKED <i>R.R.J.</i>	GRADE <i>R.R.J.</i>	CHECKED <i>R.R.J.</i>
LOTS 2L 239442	LENGTH 119721	
CITY 2L 10000	LENGTH 5000	
TOTAL 2L 249442	LENGTH 124721	

CITY \_\_\_\_\_

QUANTITIES	LOTS	CITY	LOTS	CITY
EXCAVATION				
STRAIGHT CURB NEW				
OLD CURB RESET				
CIRCULAR CURB				
PAVING				
CONCRETE BASE				

PROGRESS	START	FINISH
DATE		
BLUE PRINT ISSUED FOR:		
GRADE ONLY		
CATCH BASINS		
PAVING-CLASS		
DEPT. OF WATER SUPPLY		
GAS CO.		



**BENCH MARKS**  
 ARROW ON HYDRANT N.W. COR. KIRKWOOD & PLAINVIEW --- 137.81  
 ARROW ON HYDRANT W.S. PLAINVIEW 380' N. OF KIRKWOOD --- 137.20  
 NAIL IN LIGHT POLE N.E. COR. PLAINVIEW & DAYTON --- 134.73  
 NAIL IN LIGHT POLE N.E. COR. PAUL & PLAINVIEW --- 136.03

10992-D-1092

