

DEPARTMENT OF PUBLIC WORKS
CITY ENGINEER'S OFFICE - DIVISION OF PAVING DESIGN

STREET PAVING PLAN

NAME OF STREET: **PINEHURST AVE.**
FROM: **CURTIS AVE.**
TO: **MARGARETA AVE.**

TYPE OF PAVEMENT: _____ WIDTH: **30'**

RECORD NO: **61 89**
INDEX TOPO NO: _____ SHEET NO: **1**

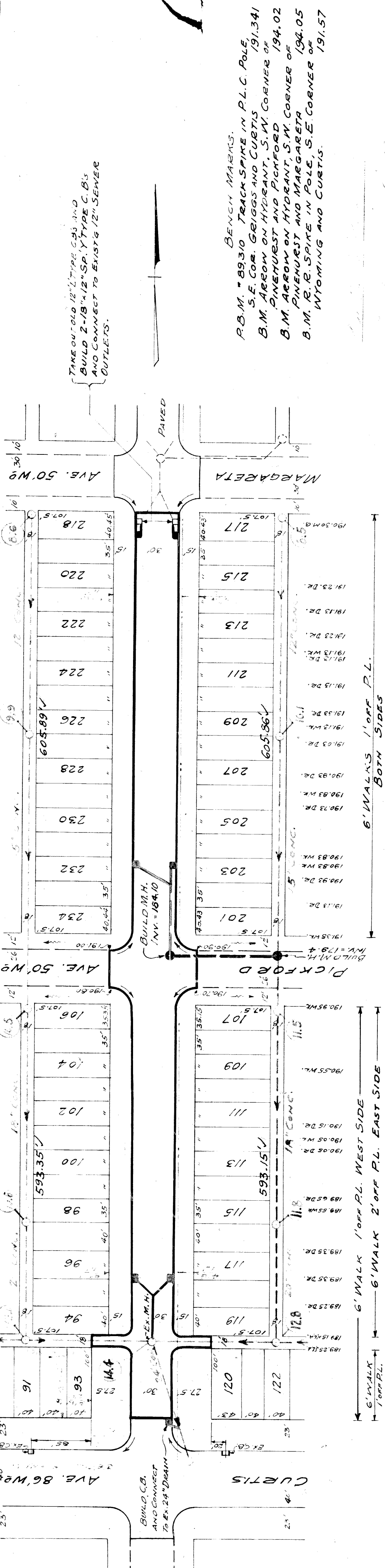
DESIGNED BY: <i>H.M. JOHNSON</i>	BOOK: 145 PAGE: C9
DRAWN BY: <i>H.M. JOHNSON</i>	DATE: 4-12-43
TRACED BY: <i>H.M. JOHNSON</i>	PLAN: _____
CHECKED BY: <i>R.R.R.</i>	PROFILE: <i>H.M.J.</i>
APPROVED: <i>[Signature]</i>	COMPUTED: _____
DATE: 1/81/13	CHECKED: R3
LENGTH: 68.00'	CITY: _____
DATE: 1/249/13	LENGTH: _____
TOTAL: 2 498 25'	TOTAL: _____

HOR. SCALE: 1" = 100'	VERT. SCALE: 1" = 2'
CHECKED: <i>H.M.J.</i>	UNIQUE: R3
CITY: _____	LENGTH: 68.00'
TOTAL: 2 498 25'	DATE: 1/249/13

QUANTITIES	LOTS	CITY
EXCAVATION		
STRAIGHT CURB NEW		
OLD CURB RESET		
CIRCULAR CURB		
PAVING		
CONCRETE BASE		

PROGRESS	DATE	FINISH
START		
DATE		

JOB NO.	DEPT OF WATER SUPPLY



DATE	DESCRIPTION	DATE	DESCRIPTION
191.15	191.15 WK.	191.15	191.15 WK.
191.20	191.20 WK.	191.20	191.20 WK.
191.23	191.23 WK.	191.23	191.23 WK.
191.25	191.25 WK.	191.25	191.25 WK.
191.28	191.28 WK.	191.28	191.28 WK.
191.31	191.31 WK.	191.31	191.31 WK.
191.34	191.34 WK.	191.34	191.34 WK.
191.37	191.37 WK.	191.37	191.37 WK.
191.40	191.40 WK.	191.40	191.40 WK.
191.43	191.43 WK.	191.43	191.43 WK.
191.46	191.46 WK.	191.46	191.46 WK.
191.49	191.49 WK.	191.49	191.49 WK.
191.52	191.52 WK.	191.52	191.52 WK.
191.55	191.55 WK.	191.55	191.55 WK.
191.58	191.58 WK.	191.58	191.58 WK.
191.61	191.61 WK.	191.61	191.61 WK.
191.64	191.64 WK.	191.64	191.64 WK.
191.67	191.67 WK.	191.67	191.67 WK.
191.70	191.70 WK.	191.70	191.70 WK.
191.73	191.73 WK.	191.73	191.73 WK.
191.76	191.76 WK.	191.76	191.76 WK.
191.79	191.79 WK.	191.79	191.79 WK.
191.82	191.82 WK.	191.82	191.82 WK.
191.85	191.85 WK.	191.85	191.85 WK.
191.88	191.88 WK.	191.88	191.88 WK.
191.91	191.91 WK.	191.91	191.91 WK.
191.94	191.94 WK.	191.94	191.94 WK.
191.97	191.97 WK.	191.97	191.97 WK.
192.00	192.00 WK.	192.00	192.00 WK.