

SEWER	OLD MAP APR. 1945
REVISIONS	
SUPPLEMENTARY DETAILS	C-324A C-390 C-587 C-739B C-325 C-524 C-733 C-938 C-326A C-585 C-739 C-327 C-586 C-739A

NOTE:  
BEFORE STARTING CONSTRUCTION CONTRACTOR  
MUST CHECK WITH UTILITIES FOR LOCATIONS OF  
EXISTING STRUCTURES WHETHER OR NOT INDI-  
CATED ON PLANS.

PLAN SCALE DISTORTED  
LOTS & ALLEYS 1" = 100'  
STREET WIDTHS 1" = 50'

DRAINAGE COMPLETED  
PAVING COMPLETED

QUANTITIES	ESTIMATED	FINAL
EXCAVATION CU. YDS	LOTS	CITY
NEW CURB LIN. FT.	LOTS	CITY
PAVING SQ. YDS	LOTS	CITY
SIDEWALK SQ. FT.	LOTS	CITY
MANHOLES ADJUST	LOTS	CITY
CONSTRUCT	LOTS	CITY
BASINS ADJUST	LOTS	CITY
CONSTRUCT	LOTS	CITY
SEWERS 12" LIN. FT.	LOTS	CITY

HOR. SCALE 1" = 100'	BOOK 1668	PAGE 35
VER. SCALE 1" = 2'	DATE LEVELS 2-28-50	DATE DRAWING 2-23-50
PLAN	W/S PROFILE	W/S COMPUTED
CHECKED J.J.	GRADE	R <sub>2</sub> CHECKED
LOT#	21	2287
CITY	21	362
TOTAL 21	264973	132487
COST ADVERTISING		
COST INSPECTION		

DESIGNED BY  
DRAWN BY  
TRACED BY  
CHECKED BY  
APPROVED

W.M. H. SMITH JR.  
R.H. R. BOOM  
MARTIN O. FOSTER  
ENGINEER OF STREETS  
DEPUTY CITY ENGINEER

CARD NO. 50-11  
DEPARTMENT OF PUBLIC WORKS DETROIT  
CITY ENGINEER'S OFFICE ... DIVISION OF PAVING DESIGN  
STREET PAVING PLAN  
PIERSON

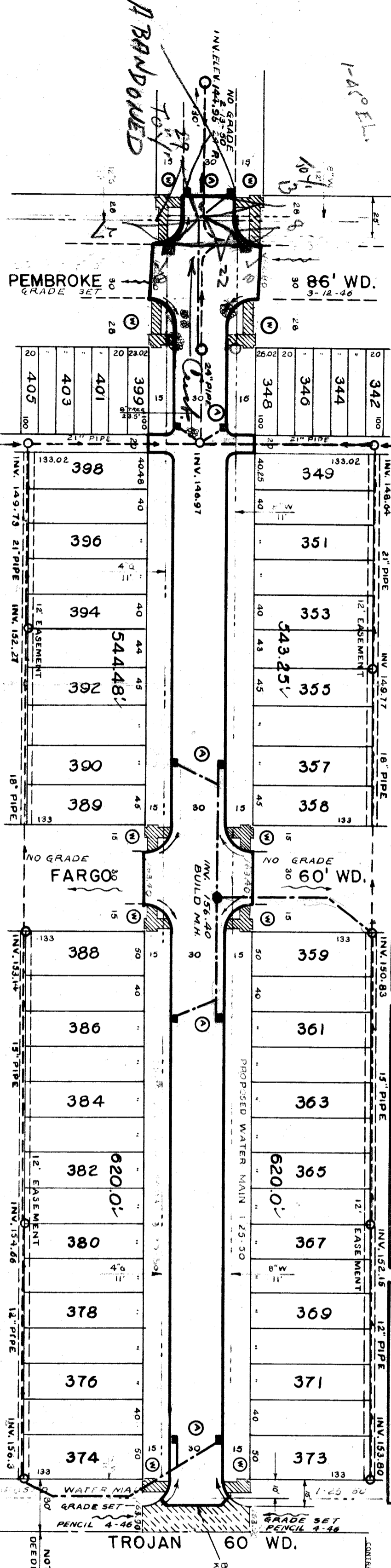
NAME OF STREET: 28' S. OF N.P.L. OF PEMBROKE  
FROM: 15' N. OF S.P.L. OF TROJAN

ASSIGN NO. 311  
PETITION NO. 311

INDEX TOPO NO. 72  
NO. 115

RECORD NO. 15' N. OF S.P.L. OF TROJAN

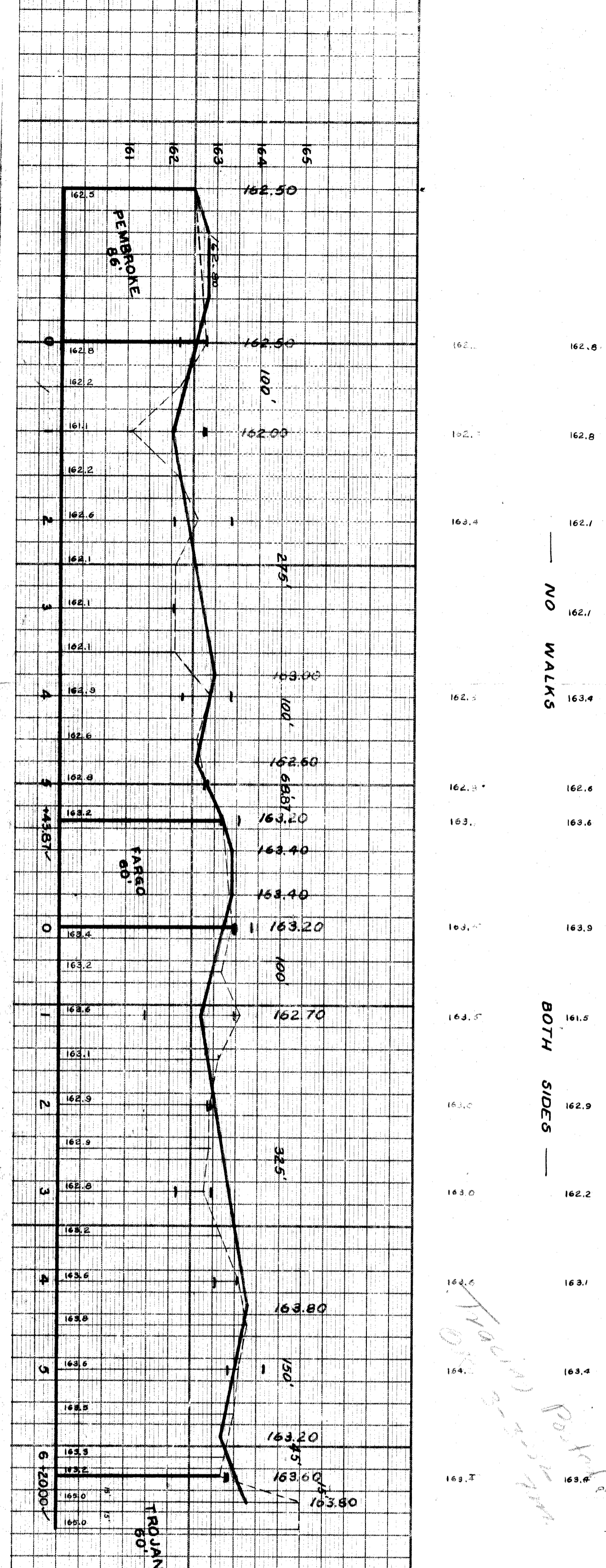
TYPE OF PAVEMENT: 8" UNIFORM AT STREET INTERSECTIONS EXCEPT AS NOTED  
ONE COURSE CONCRETE - INTERIOR CURB WIDTH 30'



CONTRACT APPROVED 6-6  
PET. NO. 311 A. ETTENHEIMER 1-31-50 25% PA.  
P.L.B.M. # 115 254A N.E. COR. BRAILE  
ARROW ON HYD. PIERSON  
PEMBROKE

NOTES

AT ① ADJUST TOPS OF 10 EXISTING CATCH BASINS USING FLAT TYPE FRAMES & GRATES. SEE NOTE PERTAINING TO CASTINGS. SEE NOTE AT ② CONSTRUCT 4" STANDARD 4" SIDEWALK ADJUST TOPS OF 3 EXISTING SEWER MANHOLES ADJUST TOPS OF 2 WATER MANHOLES. RECONSTRUCT CONE OF ONE EXISTING SEWER MANHOLE IF NECESSARY. \* BACKFILL SEWER TRENCHES UNDER PROPOSED PAVEMENT WITH APPROVED SAND-GRAVEL MATERIAL; ELSEWHERE FILL & TAMP WITH APPROVED EARTH LAYERS AS REQUIRED. CONTRACTOR SHALL GRAVE & REMOVE 1.5" TWIN TREE. 1-6" TREE 1-8" TREE 1-18" TREE AS INDICATED ON PLAN & UNIT BID COST PER TREE. DIAT ROADWAYS & ALLEYS AT ENDS OF PAVEMENT SHALL BE GRADED BACK & STONED 6" DEEP UNIFORMLY FOR A DISTANCE OF 10 FT. (OR AS INDICATED IN DETAIL ON PLAN) TO MEET EXISTING GRADES. C.U. YDS. INCLUDED UNDER EXCAVATION TOTALS FOR COST. ALL CURBS WITHIN STREET INTERSECTIONS TO BE SEPARATE TYPE X OR INTEGRAL TYPE W, EXCEPT AS OTHERWISE NOTED. \* CONTRACTOR SHALL FURNISH NEW CASTINGS FOR ALL ADJUSTED BASINS & MANHOLES EXCEPT WHEN SALVAGED CASTINGS ARE AVAILABLE & THEIR USE PERMITTED BY THE ENGINEER. A USU DEDUCTION OF \$500 FOR EACH TOP SO USED SHALL BE MADE FROM THE ORIGINAL CONTRACT PRICE. OTHERWISE THE SALVAGED CASTINGS MUST BE HAWLED TO O.R.W. YARDS AT STAVE PARK AND JOHN R. STS.



Tree Location in Pembroke Intersection

1-5" TWIN TREE 1-8" TREE 1-18" TREE  
1-6" TREE 445' E. OF W. 1-5" OF N.  
1-18" TREE 20' S. OF W. 25' S. OF N.  
1-8" TREE ① STA. 1+01 28' W. OF E.

DRAW TO INSTALL ALL DRAINAGE