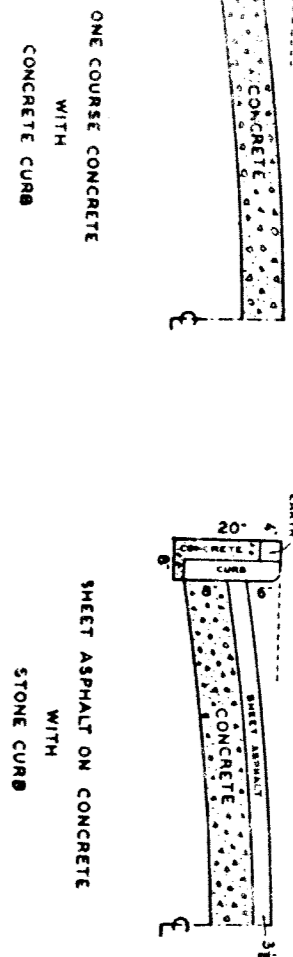


# CROSS SECTIONS

SEE STANDARD DETAIL



AT NO.	RADIUS	TRAD.	ANG.	SECT.

QUANTITIES	LOTS	CITY	LOTS	CITY

MATERIAL	QUANTITY	UNIT	PRICE	TOTAL
EXCAVATION				
STRAIGHT CURB NEW				
OLD CURB RESET				
CIRCULAR CURB				
PAVING				
CONCRETE BASE				
TOTAL				

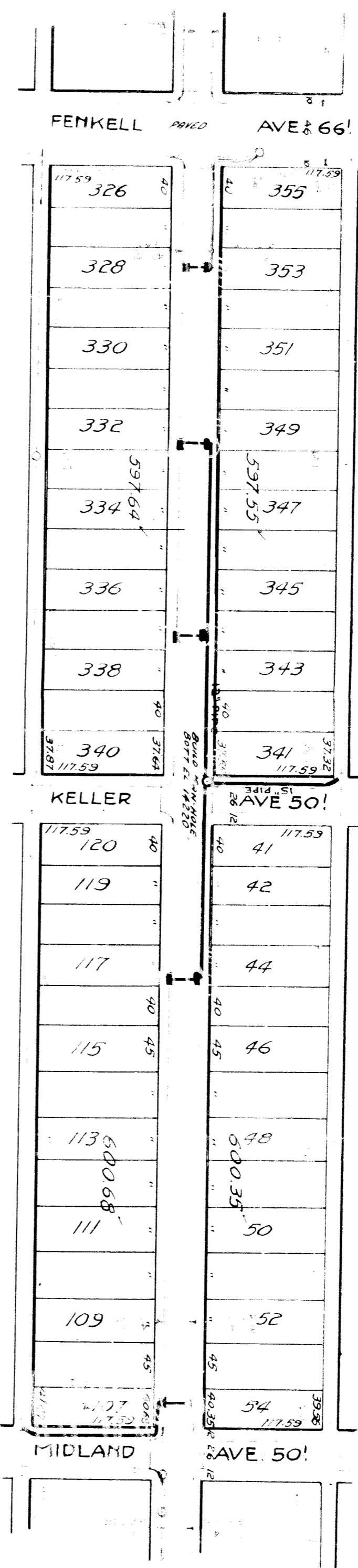
  

NO.	SCALE	1" = 100'	NO.	SCALE	1" = 40'	DATE	BY
76	1096	76	74	113	5-23-38		

**DEPARTMENT OF PUBLIC WORKS**  
 CITY ENGINEERS OFFICE - DIVISION OF PAVING DESIGN  
**STREET PAVING PLAN**  
**PIERSON AVE 50'**  
**FENKELL AVE**  
**MIDLAND AVE**

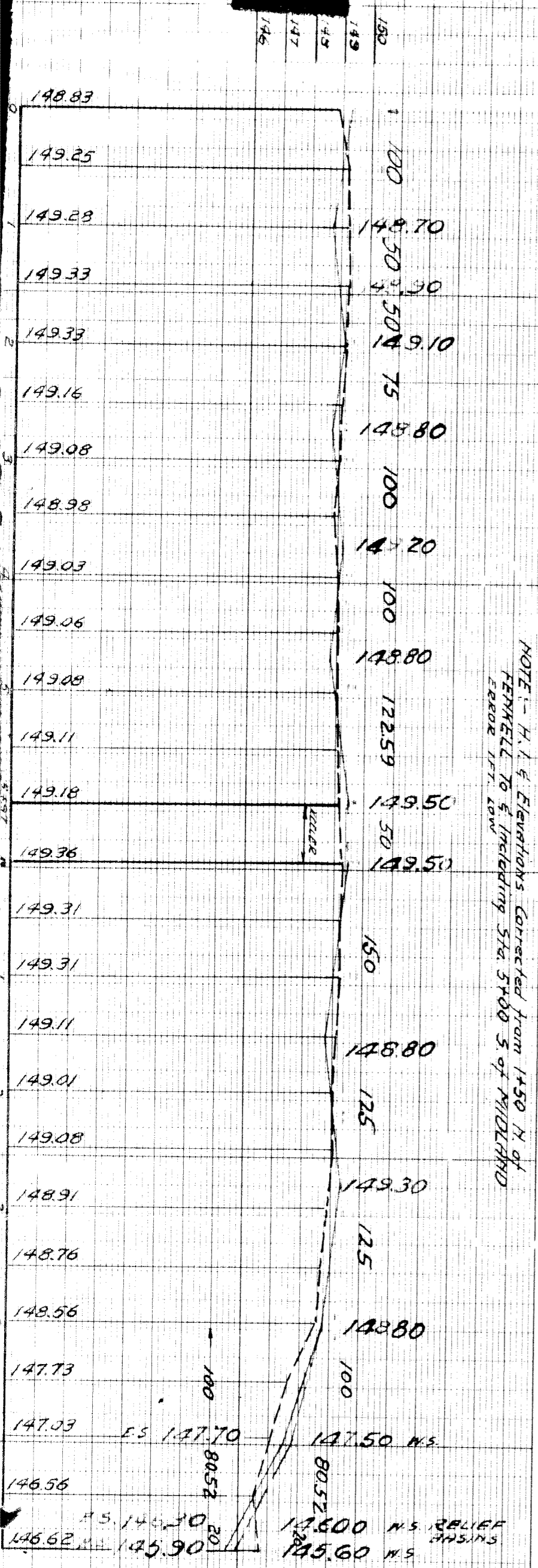
TYPE OF PAVEMENT \_\_\_\_\_ WIDTH \_\_\_\_\_

DESIGNED BY	WILLIAM F. PIERSON	APPROVED
DRAWN BY	T. H. G.	
TRACED BY		
CHECKED BY	WILLIAM F. PIERSON	



EXISTING BASINS & POOLS  
 NEW

BENCH MARKS  
 B.M. #13101 N.W. COR. BURT & FENKELL "A" S. COR. COL. BASE EL. 151.393  
 S. ENT. TO BANK BLDG. EL. 152.14  
 ARROW ON HYD. NW. COR. FENKELL & PIERSON. EL. 152.93  
 ARROW ON HYD. SW. COR. KELLER & PIERSON. EL. 148.87  
 ARROW ON HYD. SW. COR. MIDLAND & PIERSON.



NOTE: - H. I. & Elevations Corrected from 1450 N of FENKELL TO & including Sta. 5+00 S of MIDLAND Error 171.40W