

DEPARTMENT of PUBLIC WORKS  
CITY ENGINEER'S OFFICE ... DIVISION OF PAVING DESIGN  
STREET PAVING PLAN

PIEDMONT

N.P.L. OF KIRKWOOD  
S.P.L. OF DAYTON

CARD NO.	INDEX TO NO.	ASSIGN NO.	SHEET
	78 108	23519	1
NAME OF STREET	FROM	TO	SHEETS
PIEDMONT	N.P.L. OF KIRKWOOD	S.P.L. OF DAYTON	1
TYPE OF PAVEMENT	REQUESTED BY	DATE	WIDTH
ONE COURSE CONCRETE INTEGRAL CURB	Application # 248-223		30'

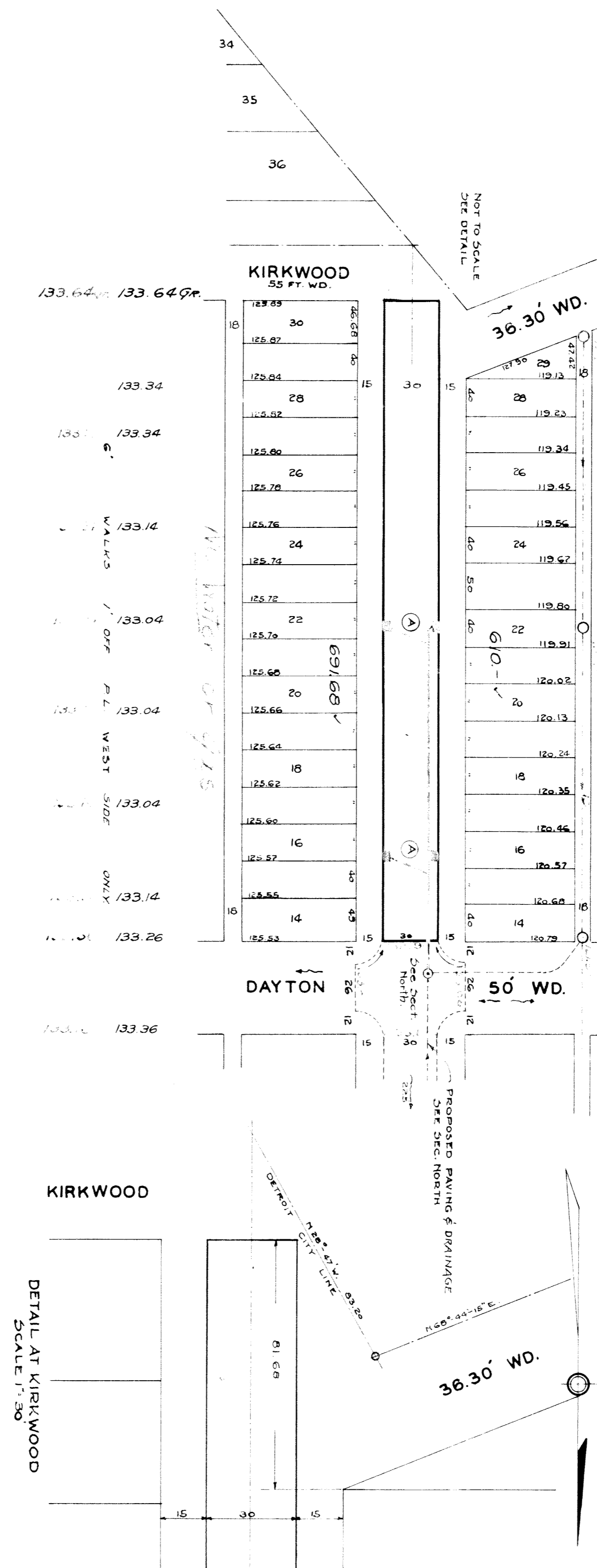
DESIGNED BY	W. I. Colthart
DRAWN BY	
TRACED BY	
CHECKED BY	S.A.S.
APPROVED BY	<i>M. R. Zacher</i>
ENGINEER OF STREETS	
CITY ENGINEER	

NON SCALE 1"=100'	BOOK 1576	PAGE 70
VER SCALE 1"=2'	DATE DRAWING 8-7-47	LEVELS 5-28-46
CHECKED BY W.C.	PROF. GRADE R3	COMPUTED 65084
CITY 21	81681	LENGTH 4084
TOTAL 21	188336	LENGTH 69168
CITY		

QUANTITIES	ESTIMATED	FINAL
EXCAVATION CU YDS	LOTS	CITY
NEW CURB LIN FT.		
PAVING SQ YDS.		
SIDEWALK SQ FT.		
MANHOLES ADJUST		
BASINS ADJUST		
SEWER 12" LIN FT.		
SEWER 15" LIN FT.		

SEWER	C-380	C-733
REVISIONS	C-325	C-524
	C-326A	C-525
	C-527	C-526
		C-739A
		C-739B

NOTE:  
BEFORE STARTING CONSTRUCTION CONTRACTOR MUST CHECK WITH UTILITIES FOR LOCATIONS OF EXISTING STRUCTURES WHETHER OR NOT INDICATED ON PLANS  
PLAN SCALE DISTORTED  
LOTS & ALLEYS 1"=100'  
STREET WIDTHS 1"=50'  
DRAINAGE COMPLETED  
PAVING COMPLETED



DETAIL AT KIRKWOOD  
SCALE 1"=30'

