

SEWER OK 2482 5/1/72

NOTE  
BEFORE STARTING CONSTRUCTION CONTRACTOR MUST CHECK WITH FIELD ENGINEER LOCATIONS OF EXISTING STRUCTURES WHETHER OR NOT INDICATED ON PLANS  
PLAN SCALE DISTORTED  
LOTS & ALLEYS 1"=50'  
STREET WIDTHS 1"=50'  
DRAINAGE COMPLETED  
PAVING COMPLETED

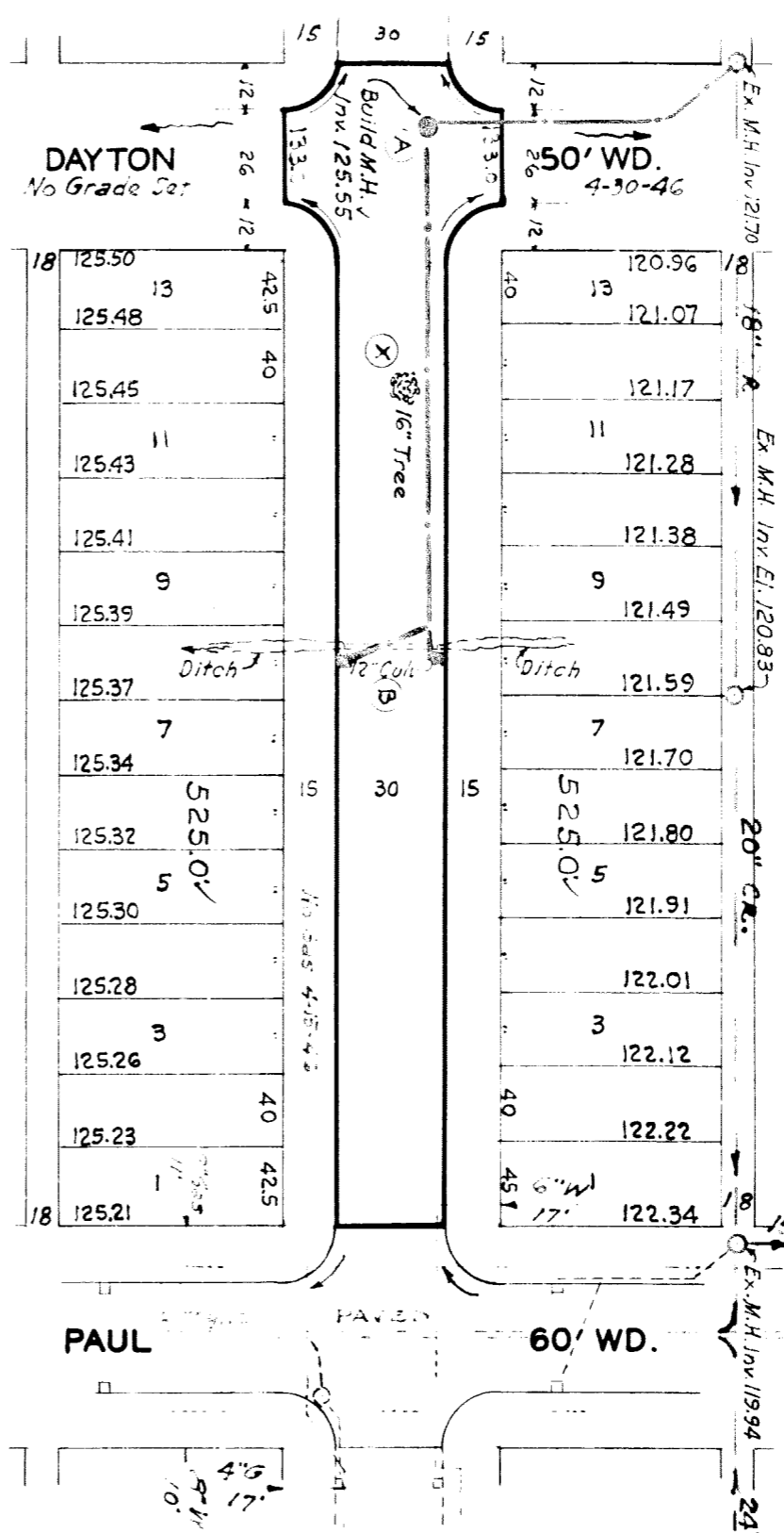
QUANTITIES	ESTIMATED	FINAL
EXCAVATION CU YDS	841	97
NEW CURB LIN FT	1808	279
PAVING SQ YDS	358	62
MANHOLES CONSTRUCT	1	-
MANHOLES ADJUST	2	-
SEWER SIZE LIN FT	358	62
SEWER SET LIN FT	358	62

NON SCALE 1"=100'	BOOK 1514	PAGE 54
DATE 4-24-46		
CHECKED BY G.B.Y.	PROFILER G.B.Y.	COMPUTED 5.5.
DATE 5.5.	GRADE R.R.R.	MARKED K.E.R.
LOTS 2L 1050.00	WIDTH 50.00	LENGTH 575.00
CITY 2L 100.00	WIDTH 50.00	LENGTH 575.00
TOTAL 2L 1150.00	WIDTH 50.00	LENGTH 575.00

DESIGNED BY Sedawski  
DRAWN BY G.B. Youatt  
CHECKED BY Senter  
APPROVED BY [Signature]  
ENGINEER IN CHARGE  
ASSISTANT CITY ENGINEER

DEPARTMENT OF PUBLIC WORKS  
CITY ENGINEER'S OFFICE - DIVISION OF PAVING DESIGN  
STREET PAVING PLAN  
A.P. 197-19  
PIEDMONT  
S.P.L. OF DAYTON  
S.P.L. OF PAUL  
TYPE OF PAVEMENT 3'-6" One Course Concrete  
Slab and Curb Intergral  
WIDTH 30'

BENCH MARKS	ELEV.
P.B.M. 108-251A NE Corner Auburn & Paul	135.23
Spike in pole S.E. Cor Paul & Piedmont	134.14
P.B.M. 98-251 NE Corner Artesian & Paul	131.52



Application # 248-82  
Application # 248-124  
3-11-46 Dayton to Paul  
4-29-46 Kirkwood to Paul

- At (A) Construct One Std. manhole complete.
- At (B) Construct 2 Std. 18"x12" Y" Basins complete and connect to manhole as shown. Remove culvert and backfill with coarse sand or crushed stone between the Ditch. Shall be filled between curb and proper lines with suitable wall compacted earth. Contractor shall notify D.P.W. to salvage old culvert pipe.
- At (X) Contractor to remove tree and grub roots.

