

BEFORE STARTING CONSTRUCTION CONTRACTOR MUST CHECK WITH UTILITIES FOR LOCATIONS OF EXISTING STRUCTURES WHETHER OR NOT INDICATED ON PLANS.	
SCALE	1" = 40'
LOTS & ALLEYS	1" = 40'
STREET WIDTH	14' & 20'
VERTICAL	1" = 2'
SUPPLEMENTARY DETAILS	C-4376 THROUGH C-4388
REVISIONS	C-4387
DATE	0-0 PLAN - JAN 1964

QUANTITIES	ESTIMATED
EXCAVATION CU YDS.	LOTS CITY
PAVEMENT REMOVAL SQ. YDS.	
CURB REMOVAL LFT.	
FILL TYPE A	
ADJUST MANHOLES	
MANHOLES RE-CONSTRUCT CONE	
CATCH BASIN ADJUST	
CATCH BASIN STANDARD NEW	
12" SEWER PIPE LFT.	
PAVING SQ. YDS.	

QUANTITIES	ESTIMATED
PAVING SQ. YDS.	LOTS CITY
PAVING UNIF. SQ. YDS.	
CURB TYPE II LFT.	
TEST CONES EACH	
SIDEWALK 4" STANDARD SQ. FT.	
CONCRETE DRIVE 8" STD. SQ. FT.	
TREE REMOVAL 4"-12" DIA.	
TREE REMOVAL 13"-18" DIA.	

ASSIGNMENT NO.	325, 01-21
BOOK NO.	1558 PO. 36-38
LEVEL	DATE 11-18-63
LOT 2L	496.00
CITY 2L	18.00
TOTAL	514.00
DATE OF DRAWING	JAN. 18, 1964
DRAINAGE COMPLETED	CAN. WORK
PAVING COMPLETED	

MADE BY	CHECKED BY
PLAN	D. WALKER
PROFILE	D. WALKER
GRADE	
SEWER APPROVED	3/12/64 (Signature)
ESTIMATE	
FINAL CHECK	ERICSON
APPROVED	
ENGINEER OF STREETS	
CITY ENGINEER	

INDEX NO.	64
TOTAL SHEETS	86
SHEET NO.	86

NAME OF STREET FROM PICKFORD TO W.P.L. SUSSEX

DEPARTMENT OF PUBLIC WORKS-CITY ENGINEERS OFFICE

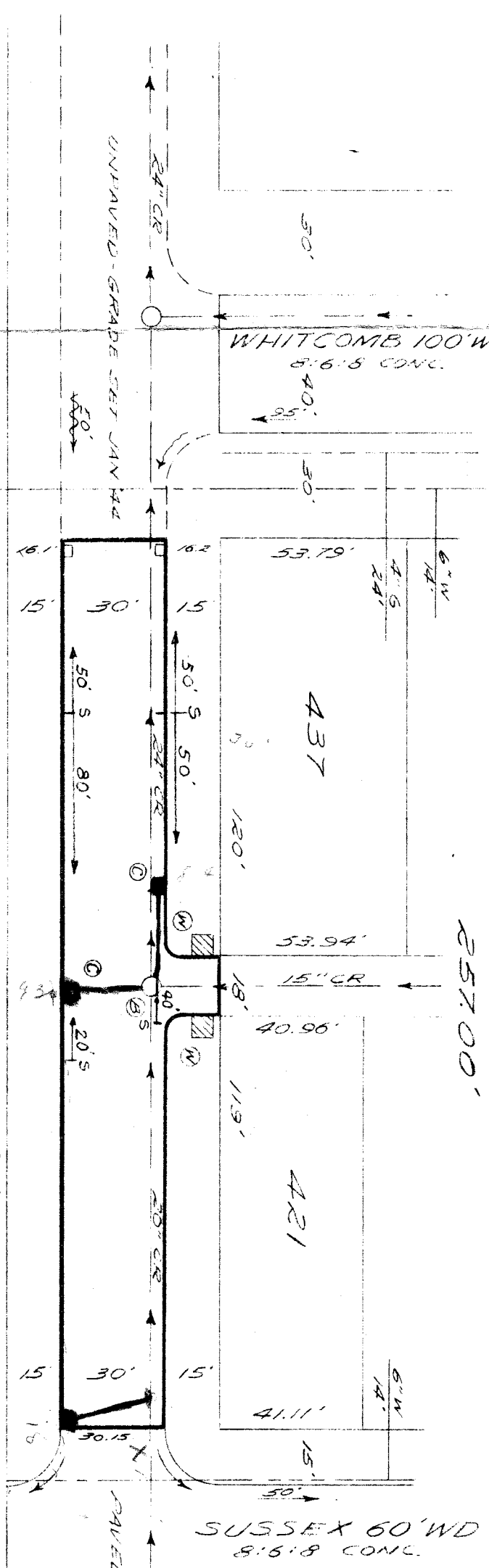
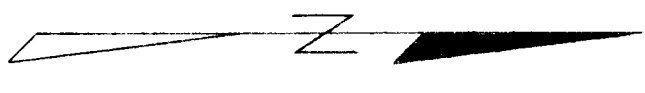
PET. NO. BY DATE

NOTE - FOR SYMBOLS @ ETC., SEE STANDARD DETAIL DRAWING C-4376

BENCH MARKS ELEV.

PL.B.M. #50-251, 5"W. COR. CURTIS & GREENFIELD 182.54' IN. 183.41
 PL.B.M. #80-251A, SE. COR. CURTIS & PLYMOUTH 181.975' IN. 183.41
 C.B.M.-RR. SPR. IN. FOLEY, N. SIDE, STA. 0+29 183.41
 C.B.M.-RR. SPR. IN. FOLEY, NW. COR. PICKFORD & SUSSEX 182.66

HORIZONTAL CONTROL-
 USE CROSSING CUT IN WALKS 5' S. OF N.P.L. OR PICKFORD AT E. P.L. WHITCOMB AND W.P.L. SUSSEX.



182.42 WK 18273	181.43 CUT
181.36 SUT	
182.13 WK	183.26 GAR
183.26 GAR	182.15 WK
181.79 WK	182.75 GAR
181.61 WK	
180.94 GUT	181.96 WK
181.72	

182.42	181.36	181.95	181.76	181.15	181.20	181.39	181.47	181.7	181.6	181.2	181.9
--------	--------	--------	--------	--------	--------	--------	--------	-------	-------	-------	-------

