

DEPARTMENT OF PUBLIC WORKS DETROIT

CITY ENGINEER'S OFFICE - DIVISION OF PAVING DESIGN

STREET PAVING PLAN

PICKFORD

FROM: E.P.L. SHAFTSBURY

TO: W.P.L. AVON

TYPE OF PAVEMENT: ONE COURSE CONCRETE, INTERLOCK CURB

WIDTH: 30'

CARD NO.	INDEX TOPOG NO.
	63 114
	72 104

NAME OF STREET: PICKFORD

FROM: E.P.L. SHAFTSBURY

TO: W.P.L. AVON

TYPE OF PAVEMENT: ONE COURSE CONCRETE, INTERLOCK CURB

WIDTH: 30'

DESIGNED BY: J.W. LARSEN

DRAWN BY: J.W.L.

TRACED BY: J.W.L.

CHECKED BY: J.W.L.

APPROVED: _____

ENGINEER OF STREETS

DEPUTY CITY ENGINEER

SEWER	C-324A	C-390	C-587	C-7393
REVISIONS	C-325	C-524	C-733	C-938
	C-326A	C-585	C-739	
	C-327	C-586	C-739A	

NOTE: BEFORE STARTING CONSTRUCTION CONTRACTOR MUST CHECK WITH UTILITIES FOR LOCATIONS OF EXISTING STRUCTURES WHETHER OR NOT INDICATED ON PLANS.

PLAN SCALE DISTORTED

LOTS & ALLEYS: 1"=100'

STREET WIDTHS: 1"=50'

DRAINAGE COMPLETED

PAVING COMPLETED

QUANTITIES	ESTIMATED	FINAL
EXCAVATION CU YDS		
NEW CURB LIN. FT.		
PAVING SQ YDS		
SIDWALK SQ. FT.		
MANHOLES ADJUST		
CONSTRUCT		
ADJUST		
CONSTRUCT		
BASINS		
SEWERS 12" LIN. FT.		

NON SCALE	1"=100'	BOOK	1692	PAGE	49
VER SCALE	1"=5'	LEVELS	NOT TO BE DRAWN BEFORE 5/2/29		
PLAN	1/1	PROFILE	1/1	COMPUTED	
CHECKED	E.G.K.	GRADE	E.G.K.	CHECKED	
DATE	5/2/29	LENGTH			
CITY					

DESIGNED BY	J.W. LARSEN
DRAWN BY	J.W.L.
TRACED BY	J.W.L.
CHECKED BY	J.W.L.
APPROVED	
ENGINEER OF STREETS	
DEPUTY CITY ENGINEER	

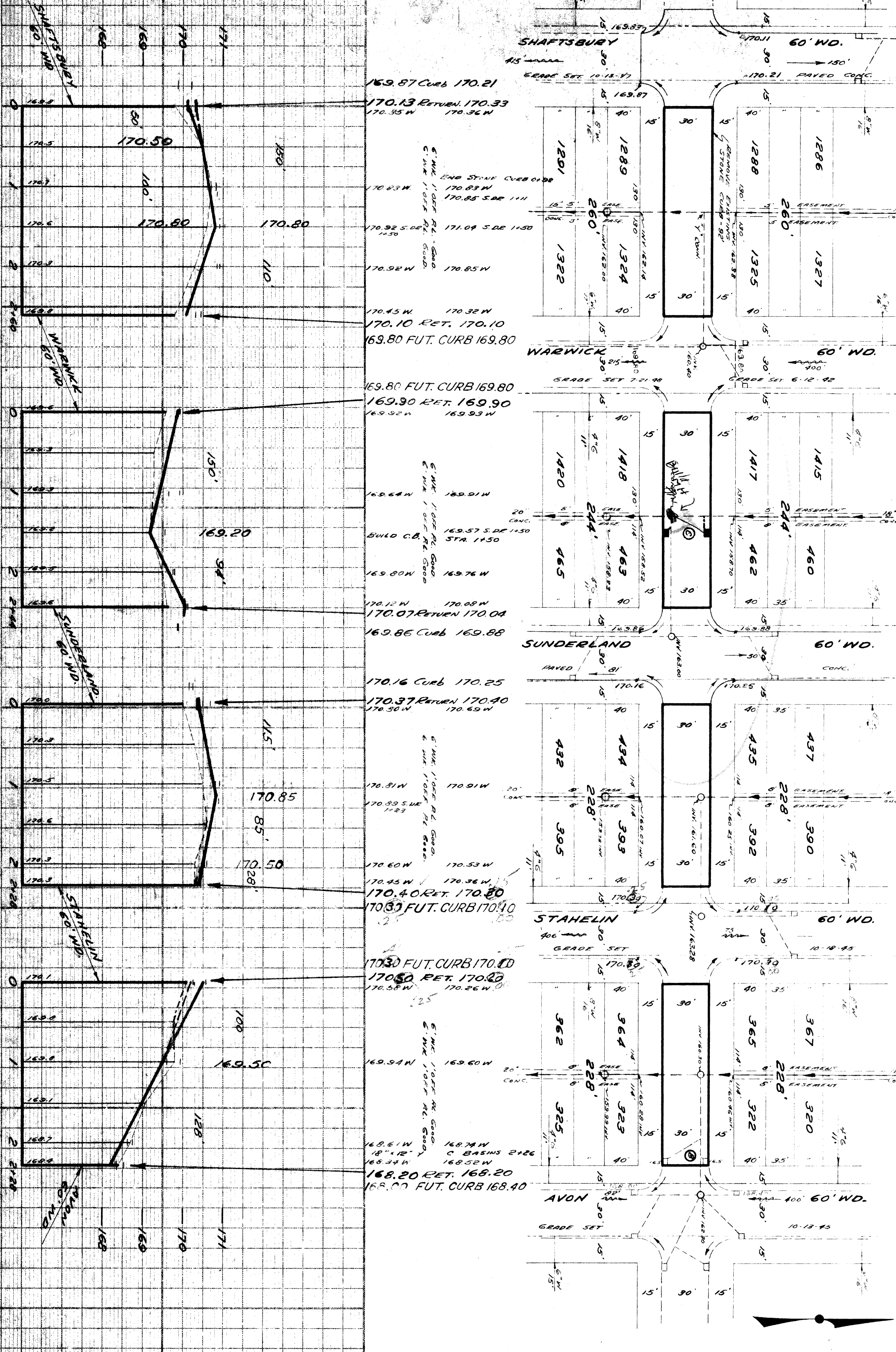
NOTES:

1. **BENCH MARKS:** EXAMINE 3322 ELEV. 158.633
 B.M. 1114 N.E. COR. PICKFORD & PATTON 158.633
 B.M. 1114 N.W. COR. PICKFORD & PATTON 158.633
 B.M. 1114 S.W. COR. PICKFORD & PATTON 158.633
 B.M. 1114 S.E. COR. PICKFORD & PATTON 158.633
 B.M. 1114 N.E. COR. AVON & CURTIS 168.710 NO. REC.

2. **ADJUST TOOLS OF EXISTING SEWER MANHOLES.**

3. **ADJUST TOOLS OF EXISTING CATCH BASINS IF NECESSARY AT UNIT COST FOR CATCH BASIN ADJUSTMENT.**

4. **CONSTRUCT & STD. PIPE CATCH BASINS WITH STD. TERMS & CONDITIONS AS REQUIRED. CONNECT TO EXISTING OUTLETS AS SHOWN. SEE STD. DRWG. C-326A & C-584**



169.87 Curb 170.21
 170.13 RETURN 170.33
 170.35 W 170.36 W

170.83 W 170.83 W
 170.85 S DE 1111
 170.92 S DE 1430
 171.09 S DE 1150
 170.92 W 170.85 W

170.45 W 170.32 W
 170.10 RET. 170.10
 169.80 FUT. CURB 169.80

169.80 FUT. CURB 169.80
 169.30 RET. 169.90
 169.92 W 169.93 W

169.64 W 169.91 W
 169.57 S DE 1150
 STA 1150

169.80 W 169.76 W
 170.12 W 170.88 W
 170.07 RETURN 170.04
 169.86 Curb 169.88

170.16 Curb 170.25
 170.37 RETURN 170.40
 170.50 W 170.69 W

170.91 W 170.91 W
 170.89 S DE 1123

170.60 W 170.53 W
 170.45 W 170.36 W
 170.40 RET. 170.20
 170.37 FUT. CURB 170.40

170.30 FUT. CURB 170.40
 170.50 RET. 170.20
 170.58 W 170.26 W

169.94 W 169.60 W
 169.74 W 169.74 W
 18" 112" C BASINS 2122
 168.34 W 169.52 W

168.20 RET. 168.20
 168.07 FUT. CURB 168.40