

NOT SUBDIVIDED

SEWER	
REVISIONS	
SUPPLEMENTARY DETAILS	
C-324A	C-390
C-325	C-524
C-326A	C-585
C-327	C-586
	C-733
	C-739
	C-938
	C-739A

NOTE: BEFORE STARTING CONSTRUCTION CONTRACTOR MUST CHECK WITH UTILITIES FOR LOCATIONS OF EXISTING STRUCTURES WHETHER OR NOT INDICATED ON PLANS.

PLAN SCALE DISTORTED

LOTS & ALLEYS 1" = 50'

STREET WIDTHS 1" = 50'

DRAINAGE COMPLETED

PAVING COMPLETED

QUANTITIES		ESTIMATED		FINAL	
EXCAVATION	CU YDS.	LOTS	CITY	LOTS	CITY
NEW CURB	LIN. FT.				
PAVING	SQ. YDS.				
SIDEWALK	SQ. FT.				
MANHOLES	ADJUST CONSTRUCT				
BASINS	ADJUST CONSTRUCT				
SEWER-12"	LIN. FT.				

HOR. SCALE	1" = 160'	BOOK	1663	PAGE	18
VER. SCALE	1" = 2'	DATE	LEVELS 9-11-49	DRAWING	9-25-49
PLAN	AK	PROFILE	AK	COMPUTED	
CHECKED	A.R.	GRADE		CHECKED	
LOT	2	174	44	1	081 22
CITY	2	240	—	1	120 —
TOTAL	2	414	44	1	201 22
TOTAL		2	414	44	1
TOTAL		2	414	44	1

DESIGNED BY L.G. VANTUYL.

DRAWN BY KANSER

TRACED BY

CHECKED BY

APPROVED BY *Martin R. LaSser*

ENGINEER OF STREETS

CITY ENGINEER

DEPARTMENT OF PUBLIC WORKS DETROIT

CITY ENGINEERS OFFICE - DIVISION OF PAVING DESIGN

STREET PAVING PLAN

PICKFORD

ASSIGN NO. 325 W.C.

PETITION NO.

NAME OF STREET E.P.L. OF MC INTYRE

FROM 21 W. OF W.P.L. OF LAHSER

TO

TYPE OF PAVEMENT 8" 6" B

8" UNIFORM AT STREET INTERSECTIONS EXCEPT AS NOTED

ONE COURSE CONCRETE, INTEGRAL CURB

INDEX TOPNO 71

INDEX NO. 122

RECORD NO.

CONTRACT APPROVED - CC

WEBER REQUEST FOR DRAINAGE 3-19-49

BENCH MARKS

FL.B.M. #122-2554 N.E. COR. ROBERT & CURTIS

ARROW OF HYD. NE COR. KARL & MC INTYRE

ARROW OF HYD. NE COR. PICKFORD & MC INTYRE

ARROW OF HYD. NE COR. PICKFORD & NORTHROP

FL.B.M. #14-251 N.E. COR. KARL & LAHSER

NOTE: P.L. OFFSET 5' TO + IN WALK

ELEV. 153.05 -

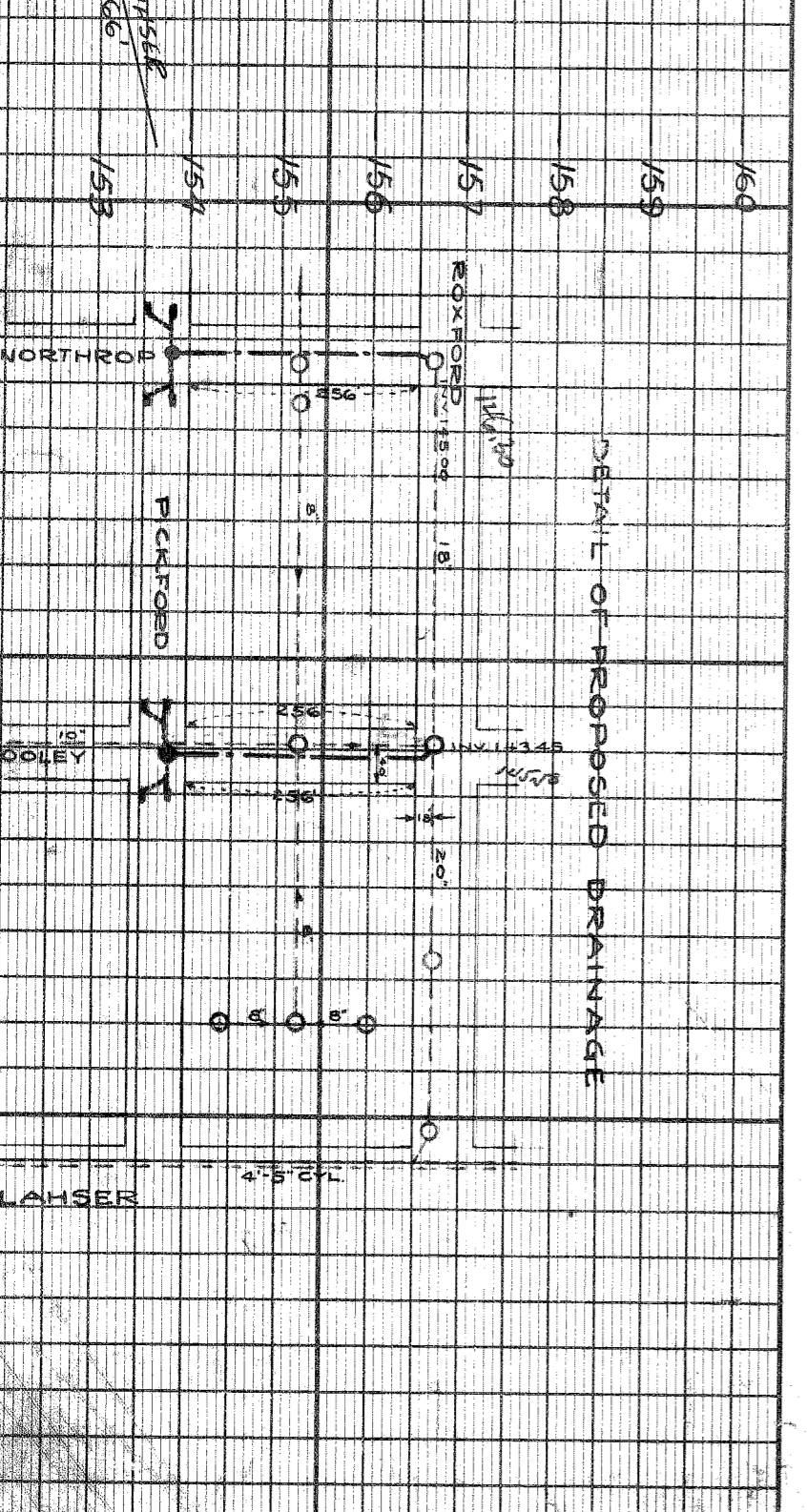
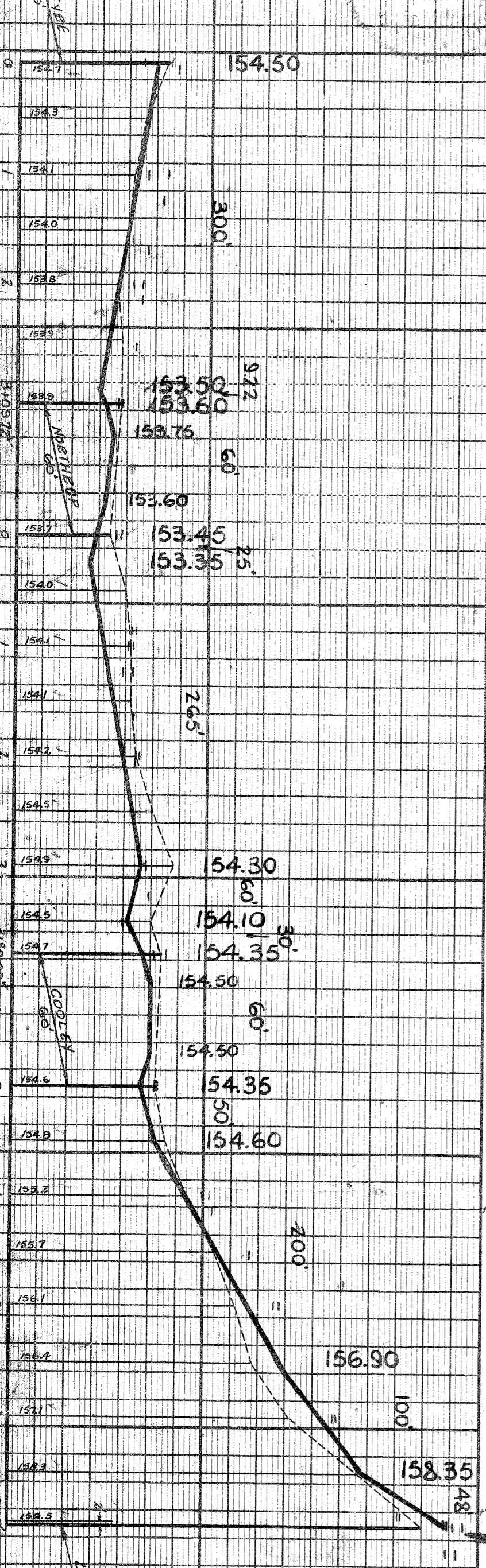
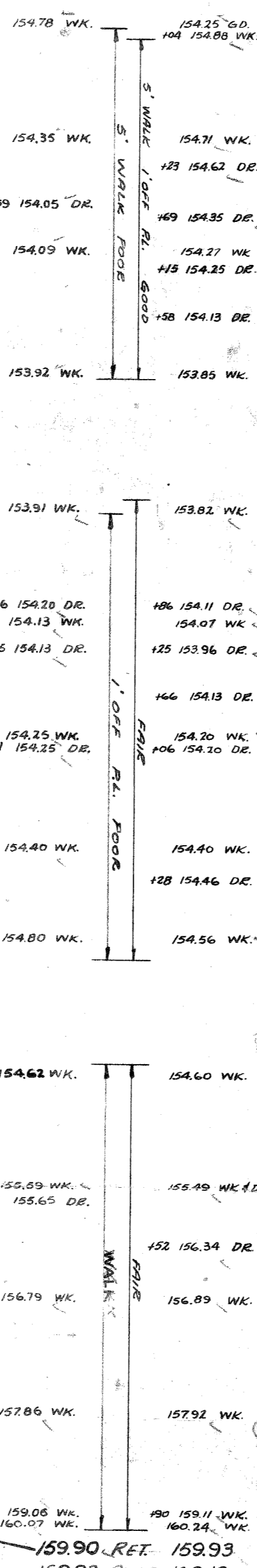
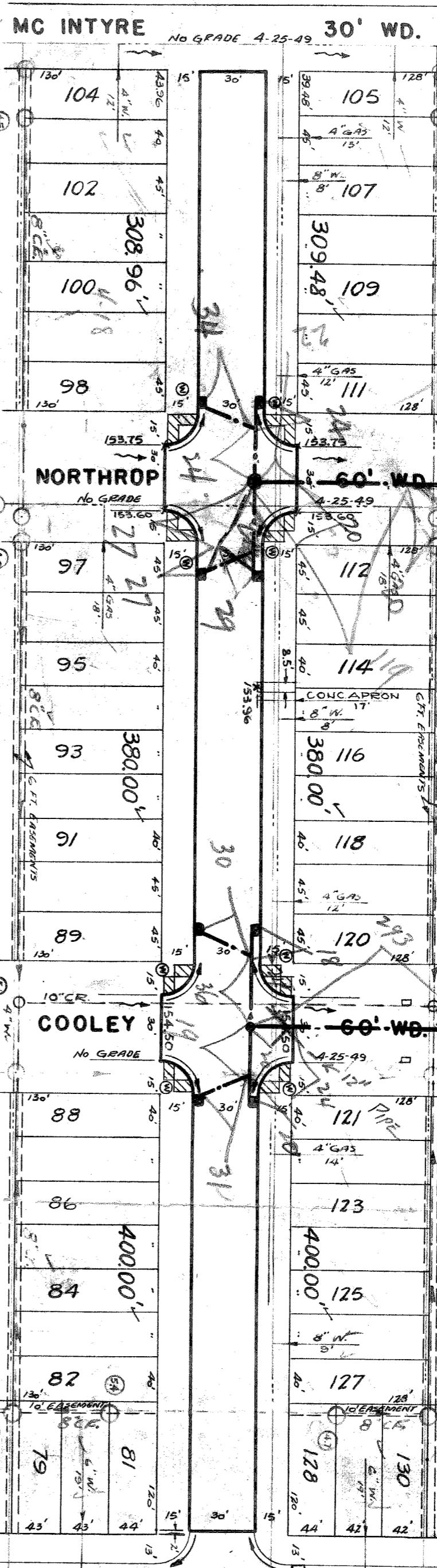
158.24 -

157.72 -

156.76 -

158.320 - 282.

158.32 W.M.



NOTE: PROPOSED DRAINAGE TO BE CONSTRUCTED AS SHOWN ON DETAIL BASINS AT PICKFORD TO EMPTY AT 18" DIA. SEWERS AT PICKFORD.

NOTE: P.L. OFFSET 5' TO + IN WALK

SEE SKETCH ON BACK

PICKFORD

LAHSER ROAD 66' WD. 93' WD.

CONTRACT APPROVED - CC

WEBER REQUEST FOR DRAINAGE 3-19-49

BENCH MARKS

FL.B.M. #122-2554 N.E. COR. ROBERT & CURTIS

ARROW OF HYD. NE COR. KARL & MC INTYRE

ARROW OF HYD. NE COR. PICKFORD & MC INTYRE

ARROW OF HYD. NE COR. PICKFORD & NORTHROP

FL.B.M. #14-251 N.E. COR. KARL & LAHSER

NOTE: P.L. OFFSET 5' TO + IN WALK

ELEV. 153.05 -

158.24 -

157.72 -

156.76 -

158.320 - 282.

158.32 W.M.