

DEPARTMENT OF PUBLIC WORKS DETROIT  
 CITY ENGINEER'S OFFICE - DIVISION OF PAVING DESIGN  
**STREET PAVING PLAN**

NAME OF STREET: **PICKFORD**  
 FROM: **E.P.L. LINDSAY**  
 TO: **W.P.L. ASBURY PK.**  
 TYPE OF PAVEMENT: \_\_\_\_\_  
 WIDTH: **30'**

RECORD NO. \_\_\_\_\_  
 INDEX TO NO. **63** / **104**  
 SHEET NO. **1**

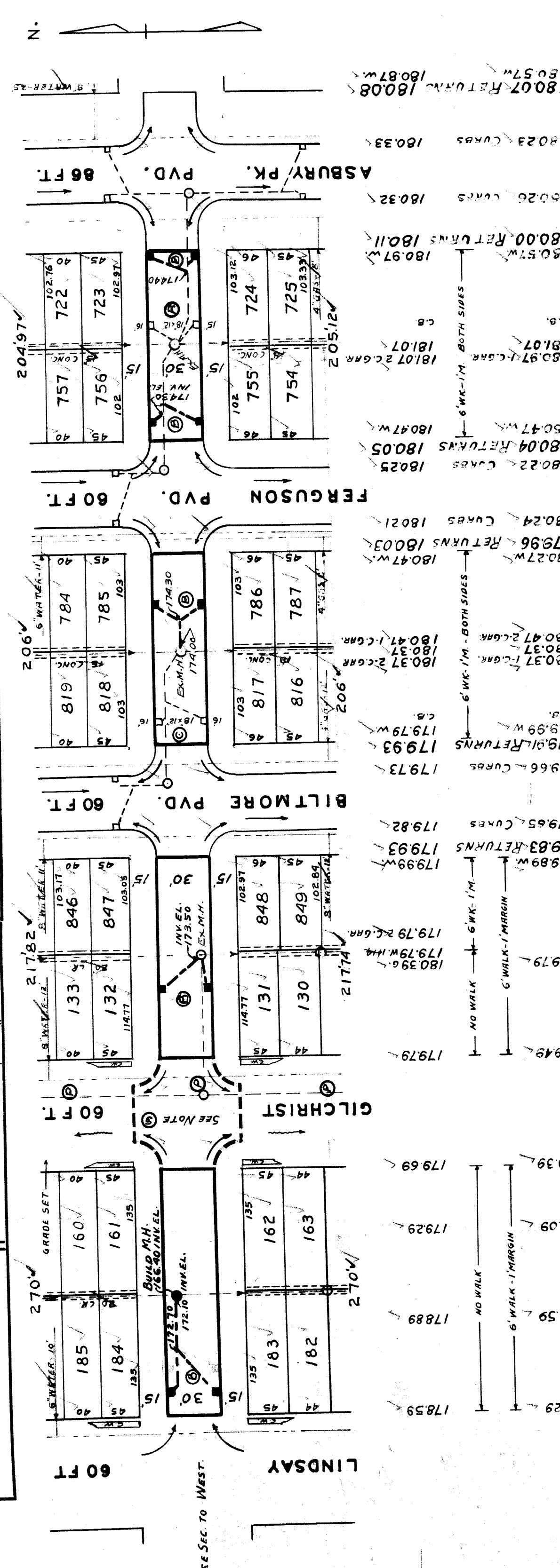
DESIGNED BY: *Robert E. Reich*  
 DRAWN BY: \_\_\_\_\_  
 TRACED BY: \_\_\_\_\_  
 CHECKED BY: **43**  
 APPROVED: \_\_\_\_\_  
 ENGINEER OF STREETS  
 ASSISTANT CITY ENGINEER

PLAN	PROFILE	COMPUTED	DATE	DATE
1-43	1-43	1-43	1-43	1-43
CHECKED	CHECKED	CHECKED	CHECKED	CHECKED
5.5	5.5	5.5	5.5	5.5
LOT 2L	LOT 2L	LOT 2L	LOT 2L	LOT 2L
1797.65	1797.65	1797.65	1797.65	1797.65
CITY	CITY	CITY	CITY	CITY
1797.65	1797.65	1797.65	1797.65	1797.65
TOTAL 2L	TOTAL 2L	TOTAL 2L	TOTAL 2L	TOTAL 2L
898.83	898.83	898.83	898.83	898.83

QUANTITIES	LOTS	CITY	LOTS	CITY
EXCAVATION	1507			
STRAIGHT CURB NEW	1798			
OLD CURB RESET				
CIRCULAR CURB				
PAVING	21996			
CONCRETE BASE				
M.H.S. ADJ.	1			
C.B.S. ADJ.	3			

PROGRESS	DATE	FINISH
START		
DATE		

JOB NO.	INDEXED
SEWER OK	3/18/44
BLUE PRINT ISSUED FOR	
GRADE ONLY	
CATCH BASINS	
PAVING-CLASS	
DEPT. OF WATER SUPPLY	
GAS CO.	



NOTE -  
 AT (A) - ABANDON 2 EXISTING 18"x12" Y-BASINS  
 & CONSTRUCT 10 STD. 18"x12" Y-BASINS COMPLETE  
 & CONNECT TO OUTLETS AS SHOWN.  
 AT (B) - ADJUST 2 EXISTING 18"x12" Y-BASINS. FURNISH  
 & INSTALL STD. FRAMES & GRATES.  
 AT (C) - DRAINAGE FOR GILCHRIST IS PROPOSED & IS NOT  
 IN AS OF JAN. 1944  
 AT (D) - SEE PLAN FOR GILCHRIST FOR PAVING DETAILS.  
 CONSTRUCT 1-STD MANHOLE COMPLETE WITH  
 FRAME & COVER.

BENCH MARKS

ARRON ON HYD. S.E. COR. PICKFORD & LINDSAY	ELEV. 181.94
" " " S.W. " " & BILTMORE	182.53
" " " S.E. " " & ASBURY PK.	183.30

