

BEFORE STARTING CONSTRUCTION - CONTRACTOR MUST CHECK WITH UTILITIES FOR LOCATIONS OF EXISTING STRUCTURES WHETHER OR NOT INDICATED ON PLANS.

SCALE 1" = 100'

STREET WIDTH 1" = 50'

SUPPLEMENTARY DETAILS C-4378 THROUGH C-4398

DATE OLD PLAN JAN. 1944

REVISIONS

QUANTITIES	ESTIMATED	CITY
EXCAVATION	CU.YDS.	
PAVEMENT REMOVAL	SQ.YDS.	
CURB REMOVAL	SQ.YDS.	
FILL	LFT.	
ADJUST MANHOLE	TYPE 22A	
MANHOLES	RE-CONSTRUCT CONE	
CATCH BASIN ADJUST	NEW	
CATCH BASIN STANDARD NEW		
12" SEWER PIPE	LFT.	
PAVING	SQ.YDS.	

QUANTITIES	ESTIMATED	CITY
PAVING	SQ.YDS.	
CURB-TYPE II	LFT.	
TEST CORES	EACH	
SIDEWALK 4" STANDARD	SQ.FT.	
CONCRETE DRIVE	8" STD. SQ.FT.	
TREE REMOVAL	4"-12" DIA.	
TREE REMOVAL	13"-18" DIA.	

ASSIGNMENT NO. 325 - D1-22

BOOK NO. 1958 Pg. 59-43 DATE 11-20-64

LOTS 2L	LEVEL	LENGTH
1513.30	755.65	
96.00	48.00	
1609.30	804.65	

DATE OF DRAWG. JAN. 15, 1964

DRAINAGE COMPLETED

PAVING COMPLETED

PLAN	MADE BY	CHECKED BY
PROFILE	D. PALMER	
SEWER APPROVED	5/17/64	
ESTIMATE		
FINAL CHECK		
APPROVED		

ENGINEER OF STREETS

11/15/64

ASST. CITY ENGINEER

Clyde R. Johnson

CITY ENGINEER

CONTRACT NO. P.W. ECONOMY PAVING (21) DRAINAGE ONLY

STREET PAVING PLAN CITY OF DETROIT

DEPARTMENT OF PUBLIC WORKS - CITY ENGINEERS OFFICE

NAME OF STREET PICKFORD

FROM E.P.L. LAUDER

TO W.P.L. STRATHMOOR

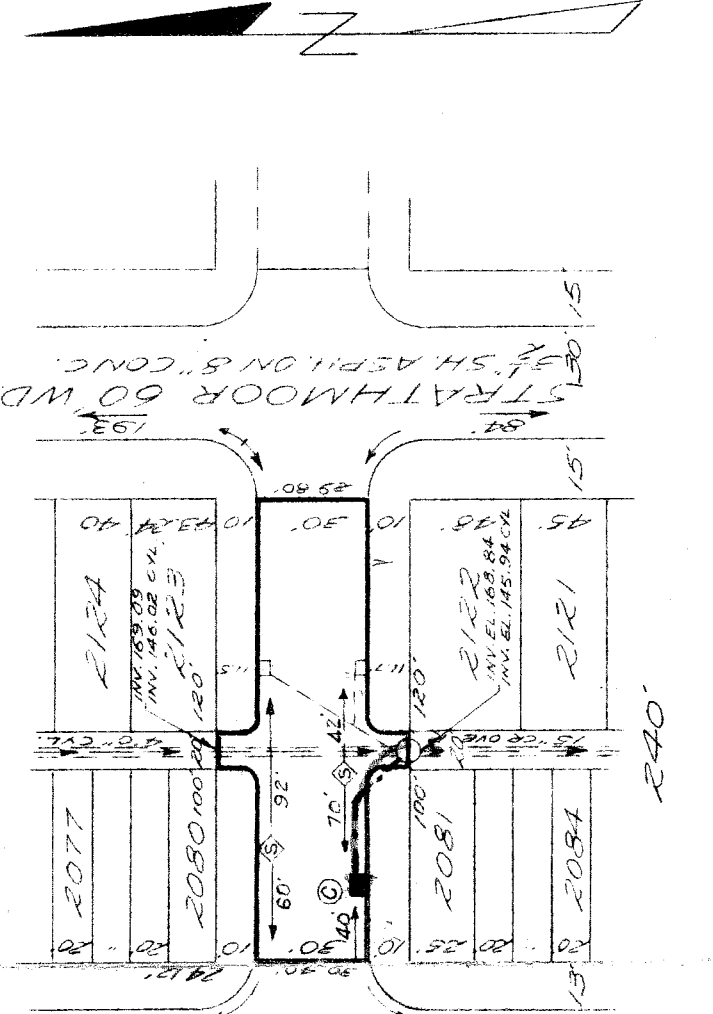
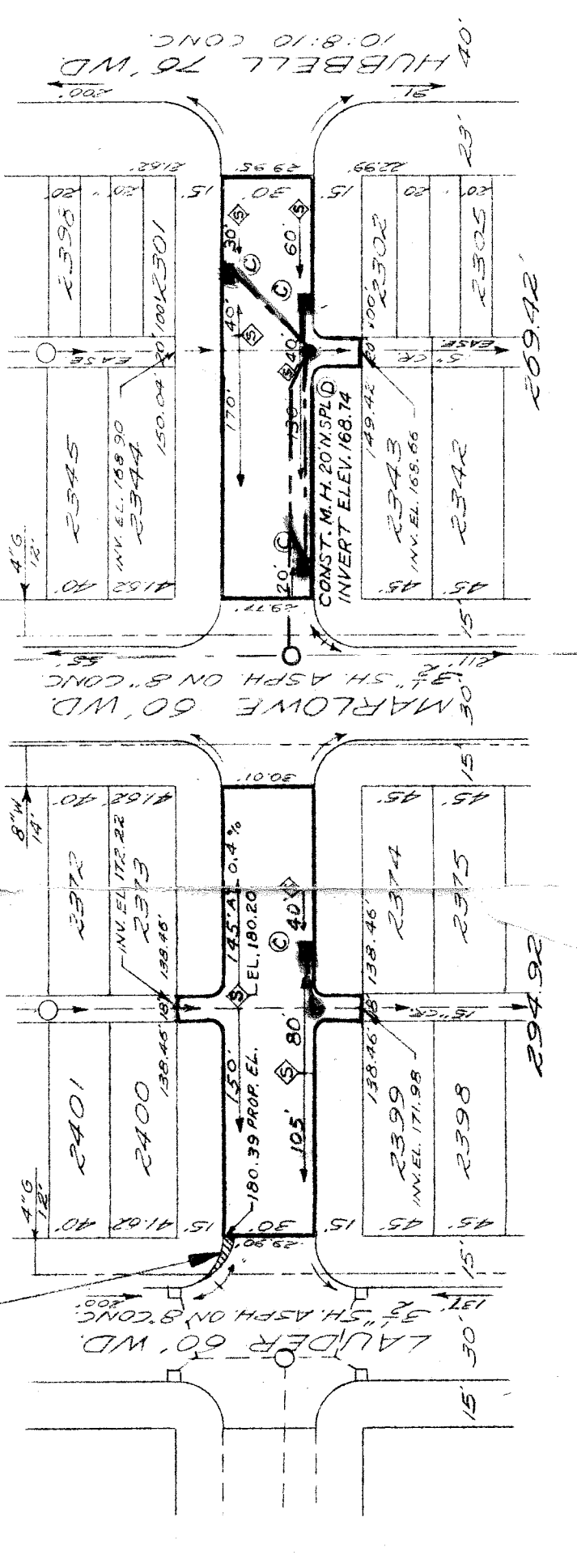
INDEX NO. 64

TOPO NO. 86

INDEXED

SHEET 1 OF SHEETS FT. WD.

NOTE: PATCH GUTTER WITH ASPHALT 3/8" THICK AT P.L. TO 1/8" AT CENTER OF CURB CIRCLE TO REVERSE DRAINAGE.



PET. NO. BY DATE

NOTE - FOR SYMBOLS (A) ETC., SEE STANDARD DETAIL DRAWING C-4378

BENCH MARKS

P.L. B.M. 246-251A, N.E. COR. CURTIS; MARK MAIN 180.5294

P.L. B.M. 480-251, S.L. COR. CURTIS; HUBBELL 181.1514

C.B.M. -> HYD. S.E. COR. PICKFORD; HUBBELL 184.66

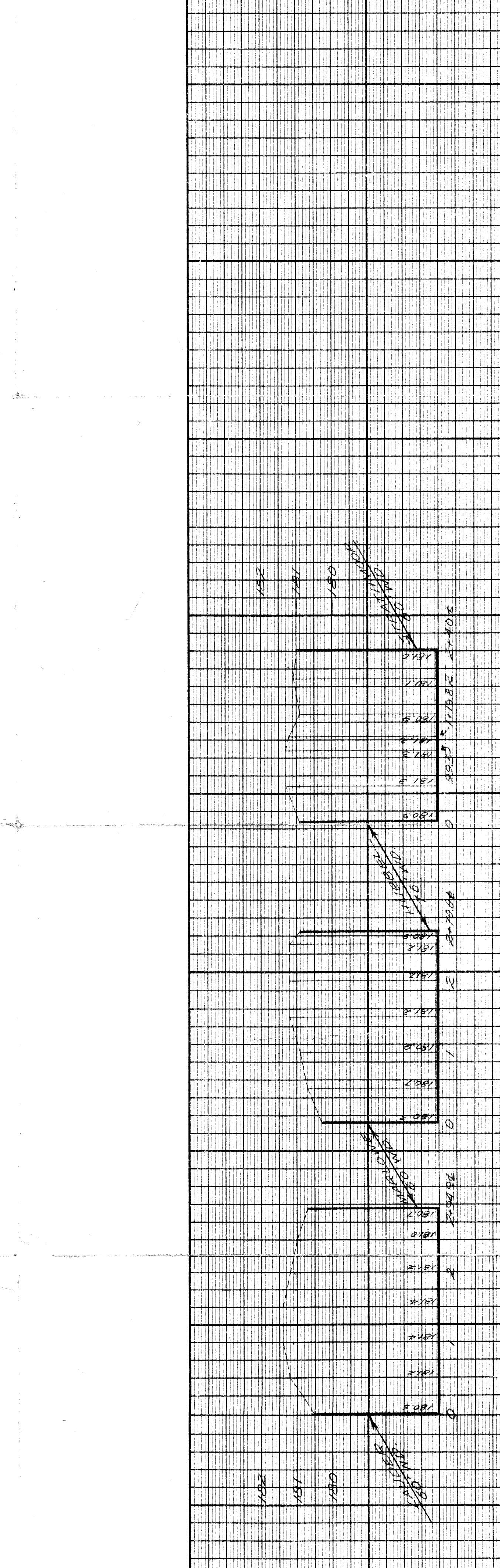
C.B.M. -> HYD. S.W. COR. PICKFORD; STRATHMOOR 184.57

C.B.M. -> HYD. N.W. COR. PICKFORD, STA. 2435 E. OF WALKLOVE 182.04

C.B.M. -> HYD. S.W. COR. PICKFORD; MARLOWE 184.07

C.B.M. -> HYD. S.W. COR. PICKFORD; LAUDER 184.02

HORIZONTAL CONTROL USE CROSSIES CUT IN WALKS S' S. OF N.W.L. PICKFORD AT ALL RETURNS.



1	100
2	101
3	102
4	103
5	104
6	105
7	106
8	107
9	108
10	109
11	110
12	111
13	112
14	113
15	114
16	115
17	116
18	117
19	118
20	119
21	120
22	121
23	122
24	123
25	124
26	125
27	126
28	127
29	128
30	129
31	130
32	131
33	132
34	133
35	134
36	135
37	136
38	137
39	138
40	139
41	140
42	141
43	142
44	143
45	144
46	145
47	146
48	147
49	148
50	149
51	150
52	151
53	152
54	153
55	154
56	155
57	156
58	157
59	158
60	159
61	160
62	161
63	162
64	163
65	164
66	165
67	166
68	167
69	168
70	169
71	170
72	171
73	172
74	173
75	174
76	175
77	176
78	177
79	178
80	179
81	180
82	181
83	182
84	183
85	184
86	185
87	186
88	187
89	188
90	189
91	190
92	191
93	192
94	193
95	194
96	195
97	196
98	197
99	198
100	199
101	200
102	201
103	202
104	203
105	204
106	205
107	206
108	207
109	208
110	209
111	210
112	211
113	212
114	213
115	214
116	215
117	216
118	217
119	218
120	219
121	220
122	221
123	222
124	223
125	224
126	225
127	226
128	227
129	228
130	229
131	230
132	231
133	232
134	233
135	234
136	235
137	236
138	237
139	238
140	239
141	240
142	241
143	242
144	243
145	244
146	245
147	246
148	247
149	248
150	249
151	250
152	251
153	252
154	253
155	254
156	255
157	256
158	257
159	258
160	259
161	260
162	261
163	262
164	263
165	264
166	265
167	266
168	267
169	268
170	269
171	270
172	271
173	272
174	273
175	274
176	275
177	276
178	277
179	278
180	279
181	280
182	281
183	282
184	283
185	284
186	285
187	286
188	287
189	288
190	289
191	290
192	291
193	292
194	293
195	294
196	295
197	296
198	297
199	298
200	299
201	300