

SEWER	OK	DATE	3/8/44
INDEXED		JOB NO.	
REVISIONS:	changed grade at Stansbury 10/1/41 S.A.S.	DATE	
		START	
		FINISH	
		QUANTITIES	
		EXCAVATION	1087
		STRAIGHT CURB NEW	1380
		OLD CURB RESET	153
		CIRCULAR CURB	222
		PAVING	2380
		CONCRETE BASE	911
		WKS. - 50 FT	432
		C.B.S. - CONST.	6
		1/2" SEWER LIN. FT.	170
		DEPT. OF WATER SUPPLY	
		GAS CO.	
		CONTRACT NO.	
		DATE	
		PLAN	
		CHECKED	5.5
		GRADE	R3
		COMPUTED	R2
		CHECKED	5.5
		CITY	714/10
		LENGTH	139.87
		WIDTH	85.397
		CITY	
		DESIGNED BY	
		DRAWN BY	
		TRACED BY	
		CHECKED BY	65
		APPROVED	
		ENGINEER OF STREETS	
		CITY ENGINEER	

DEPARTMENT OF PUBLIC WORKS  
CITY ENGINEERS OFFICE ... DIVISION OF PAVING DESIGN  
**STREET PAVING PLAN**  
**PICKFORD**

NAME OF STREET  
**E.P.L. ARDMORE**

FROM  
**W.P.L. JAMES COUZENS**

TYPE OF PAVEMENT

WIDTH **30'**

RECORD NO. **64 86**

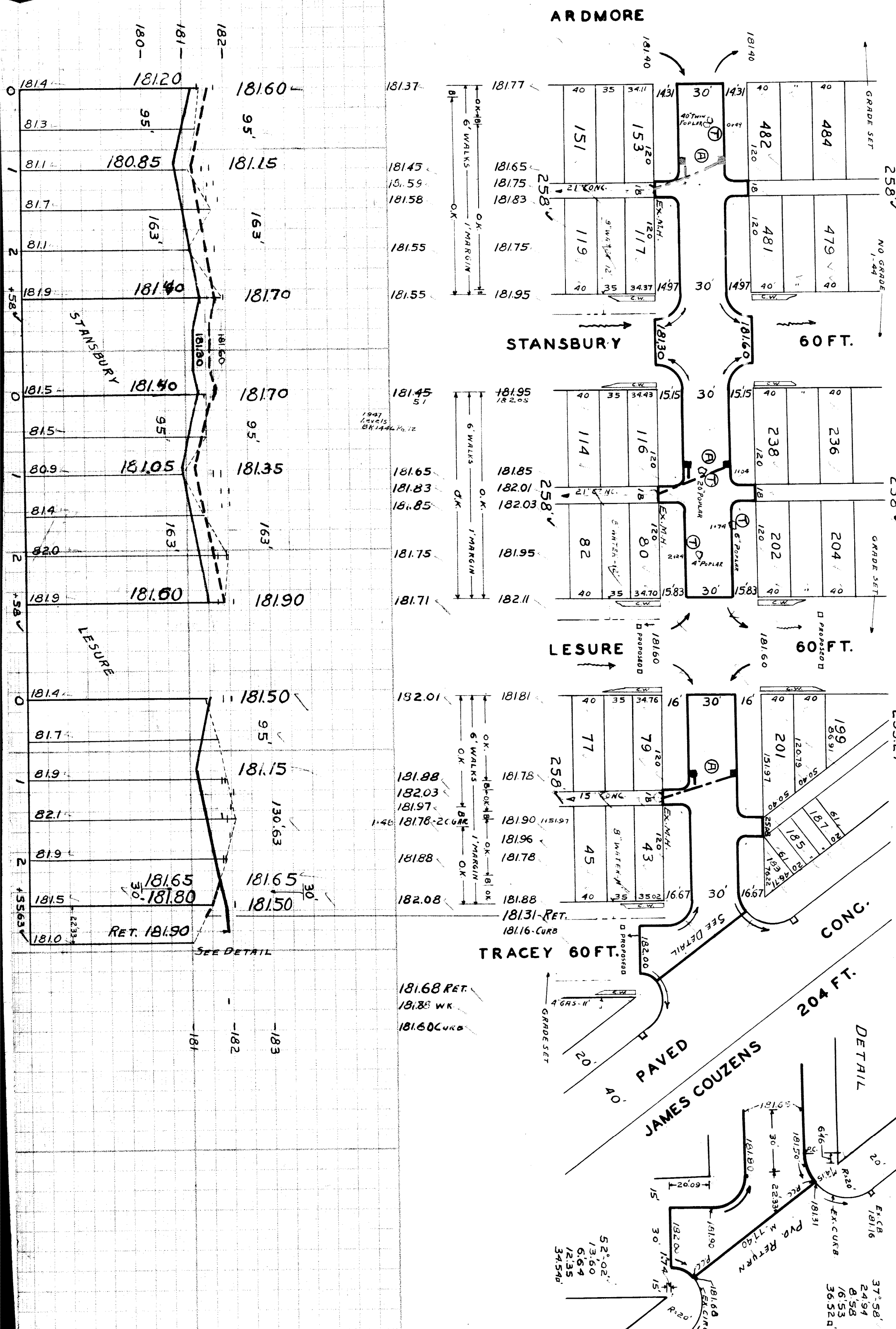
INDEX TO NO. **64**

TORO NO. **86**

NUMBER OF SHEETS **1**

SHEET NO. **1**

H. **AP 3-24**



BENCH MARKS	ELEV.
SPKIN 5.5 OF D.E. POLE NE COR PICKFORD & ARDMORE	182.23
" " " " " NW " "	183.23
" " " " " SW " "	182.71

NOTES-  
AT (A) - CONSTRUCT 6" STD 18"x12" BASINS COMPLETE & CONNECT TO OUTLETS AS SHOWN.  
AT (T) - REMOVE 4 TREES AS SHOWN.

