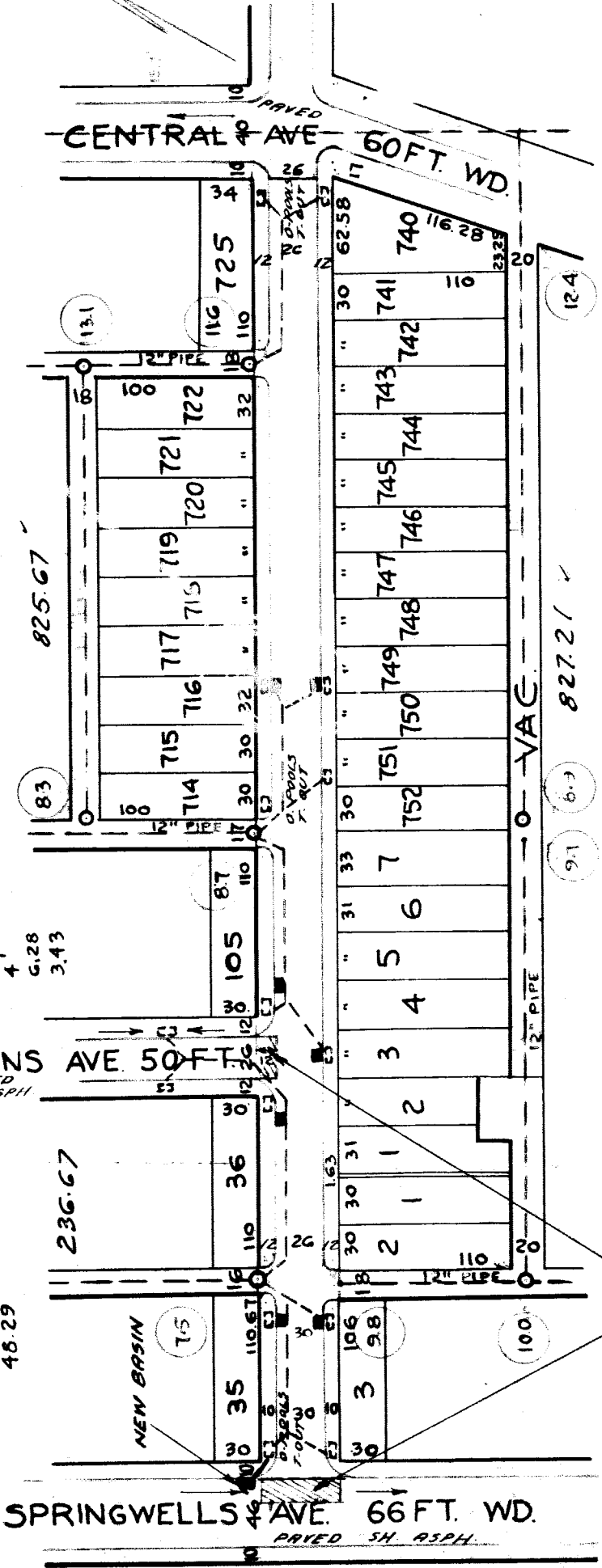


# PERSHING AVE. 50' WD FROM CENTRAL TO SPRINGWELLS

NEW PAVING  
CLASS "A" - 26 @ 30 FT. WIDE - 6" ONE CO. CONCR.

SERIES - J-J



BENCH MARKS	ELEV.
#1922-SPIKE IN 10" POPLAR E.S. LAWDALE 100' S. OF HOMER	108.00
SPIKE IN LT. POLE S.S. HOMER AT MULLANE	108.80
SPIKE IN 10" MAPLE N.W. COR. MULLANE & HOMER	109.35
SPIKE IN 10" LOCUST TREE N.E. COR. SPRINGWELLS & PERSHING	111.04
SPIKE IN ELEC. POLE N.W. COR. PERSHING & ALLEY E. OF EVANS	110.48
SPIKE IN ELEC. POLE N.S. PERSHING 15' W. OF CENTRAL	113.82

□ = EXISTING POOLS & BASINS  
■ = NEW

SCALE	1" = 10'
DATE	10/18
DESIGNED BY	D.L.
PROJECT	H.J.S.
COMPUTED BY	MESSERLING
CHECKED BY	
MADE BY	

BOOK 920 - P. 68

Lots 1533.88' 1/2 = 766.94'  
CITY 13900' 1/2 = 69.50'  
TOTAL 1672.88' 1/2 = 836.44'

JOB-NO-D 1151

STRIP TOP & ADJUST CROWN  
IF NECESSARY

