

78 p 4/18/46

SEWER	OK	4/18/46
REVISIONS		
SUPPLEMENTARY DETAILS		
DRAWING NO.		

NOTE:
BEFORE STARTING CONSTRUCTION CONTRACTOR MUST CHECK WITH UTILITIES FOR LOCATIONS OF EXISTING STRUCTURES WHETHER OR NOT INDICATED ON PLANS.

PLAN SCALE DISTORTED
LOTS & ALLEYS 1" = 100'
STREET WIDTHS 1" = 90'

DRAINAGE COMPLETED
PAVING COMPLETED

QUANTITIES	ESTIMATED		FINAL	
	LOTS	CITY	LOTS	CITY
EXCAVATION CU. YDS.	773			
NEW CURB LIN. FT.	1810			
PAVING SQ. YDS.				
SIDEWALK SQ. FT.				
MANHOLES CONSTRUCT ADJUST				
BASINS CONSTRUCT	6			
SEWERS 12" LIN. FT.	280			
SEWERS 18" LIN. FT.				

HOR. SCALE 1" = 100'	BOOK 1402	PAGE 16-17
VER. SCALE 1" = 2'	DATE 8-18-45	
PLAN T.K. PROFILE	T.K. COMPUTED	\$ 5.50
CHECKED R ³ GRADE	R ³ CHECKED	95
LOT# 2L 1206.43	LENGTH	603.26
CITY 2L 1206.43	LENGTH	603.26
TOTAL 2L 1206.43	LENGTH	603.26
CITY	LENGTH	603.26

DESIGNED BY	R ²
DRAWN BY	T. KANOW
TRACED BY	T. K.
CHECKED BY	R. Room
APPROVED	
ENGINEER OF STREETS	
ASSIST. CIV. ENGINEER	

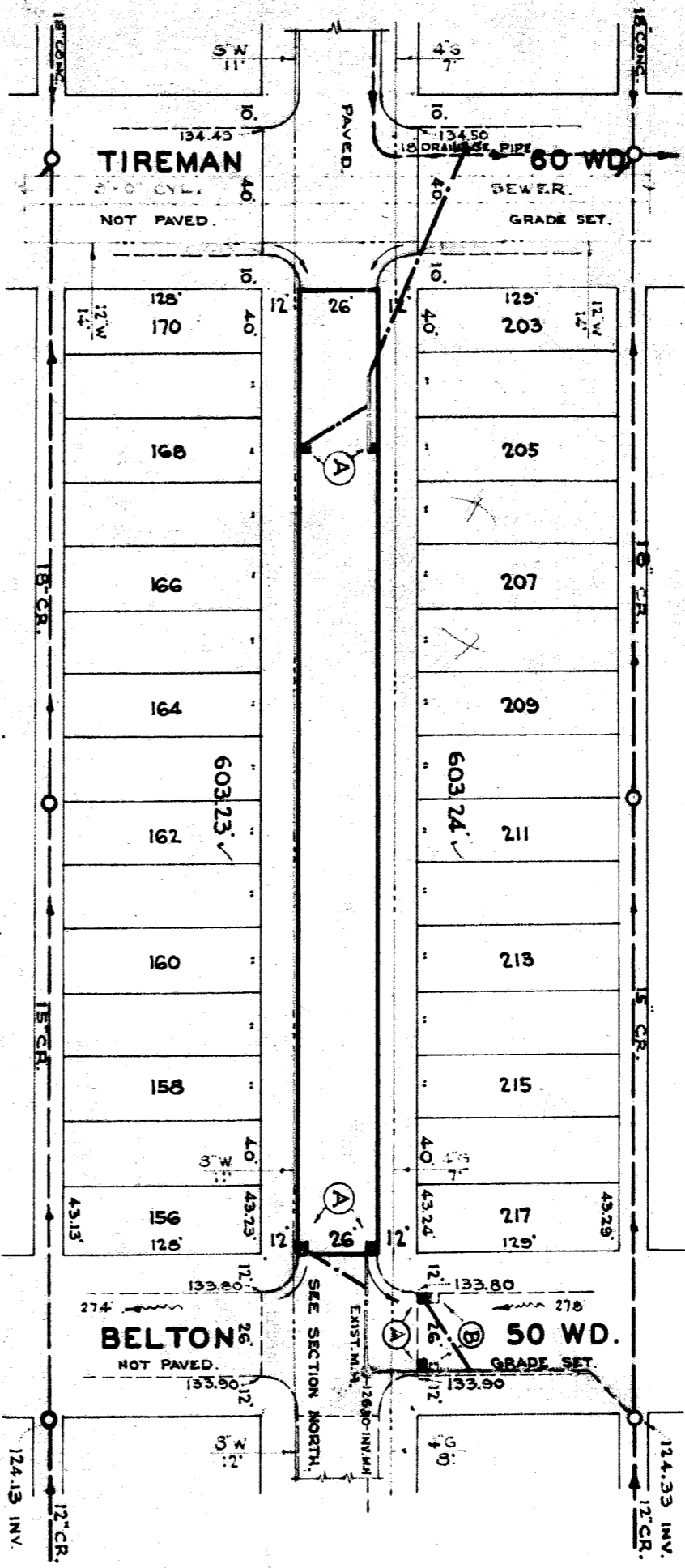
DEPARTMENT OF PUBLIC WORKS DETROIT
CITY ENGINEER'S OFFICE - DIVISION OF PAVING DESIGN
STREET PAVING PLAN

NAME OF STREET: **PENROD**
FROM: **N. P. L. OF TIREMAN**
TO: **S. P. L. OF BELTON**

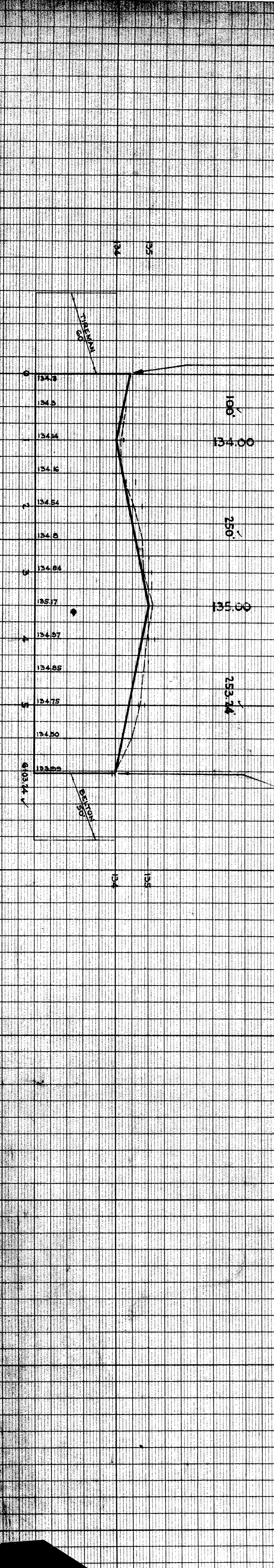
TYPE OF PAVEMENT: **8.6.8 ONE COURSE CONCRETE.** WIDTH: **26'**
SLAB & CURB INTEGRAL.

PETITION No 6073. REQUESTED BY SYLVIA SHOJDEL ET AL.
JULY 27, 1945

ASSIGNMENT No: **7632 A.**
SHEET 1 OF 1 SHEETS



134.47	CURB	134.49
134.45	RET.	134.43
134.7		134.6
134.2	WK.	134.2 WK.
134.6	DR.	134.3 DR.
134.8	WK.	134.5 WK.
135.0	DR.	135.0 DR.
135.1	WK.	135.1 WK.
135.1	DR.	135.1 DR.
135.2	WK.	135.0 WK.
134.9	WK.	134.7 WK.
134.0	WK.	134.0 WK.



NOTES

AT (A) CONSTRUCT 6 STANDARD 18"x12" BASINS COMPLETE AND CONNECT TO EXISTING SEWER AS SHOWN.

AT (B) ABANDON 2 EXISTING CATCH BASINS. CONTRACTOR SHALL FURNISH AND INSTALL STANDARD FLAT TYPE CATCH BASIN FRAMES AND GRATES. NOTIFY D.R.W. TO SALVAGE OLD CASTINGS.

BENCH MARKS

P.B.M. 99-252	NORTHWEST CORNER TIREMAN & SOUTHFIELD.	132.163
B.M. ARROW	ON HYDRANT SOUTHEAST CORNER TIREMAN & PENROD.	139.10
B.M. ARROW	ON HYDRANT SOUTHEAST CORNER TIREMAN & BELTON.	137.00

ELEV.

Requested by Mrs. Fox - 4-18-46