

SEWER INDEXED	JOB NO.	PROGRESS	QUANTITIES	LOTS	CITY	LOTS	CITY	LOTS	CITY	DESIGNED BY	DATE	BOOK	PAGE
	BLU PRINT ISSUED FOR	START	EXCAVATION	727	504	504	504	504	504	A. J. ...	2-2-44	1420	9
	GRADE ONLY	FINISH	STRAIGHT CURB NEW	1334	162	162	162	162	162	DRAWN BY			
	CATCH BASINS		OLD CURB REST	-	-	-	-	-	-	TRACED BY			
	HAVING CIV. ASS.		CIRCULAR CURB	-	-	-	-	-	-	CHECKED BY			
			SEWERS 12" LW. FT.	2732	1763	286	298	298	298	APPROVED			
			WALKS - S.F.	200	130	130	130	130	130	ENGINEER OF STREETS			
			M.H.'s - BULD. DRIK	-	-	-	-	-	-	ASST. CITY ENGINEER			
			BASINS - CONST.	3	5	5	5	5	5				

CARD NO.	INDEX NO.	TOPO NO.	RECORD NO.
	63	105	

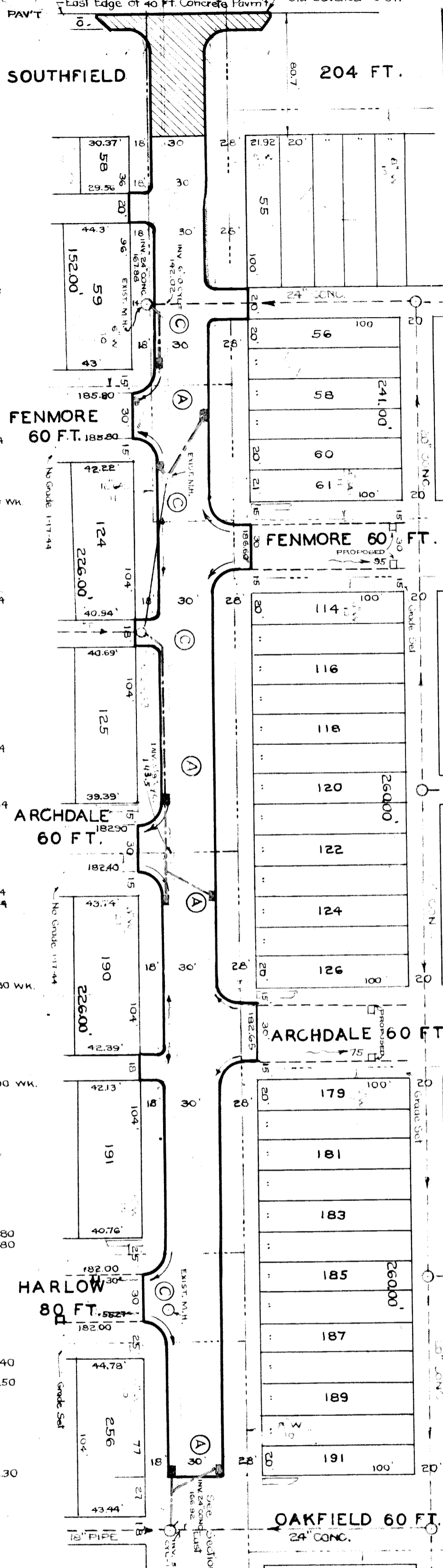
NAME OF STREET: 80.7 FT. W. OF E.P.L. OF SOUTHFIELD

FROM: W.P.L. OF OAKFIELD

TO: 30'±36 FT.

TYPE OF PAVEMENT: ONE COURSE CONCRETE

WIDTH: 30'±36 FT.



BENCH MARKS	ELEV.
BOOT SPIKE, W.S. MAPLE, E.S. SOUTHFIELD, 180 S. ST. MARTIN'S - #105-206	185.984
BRASS CAP IN HANDHOLE, N.E. COR. PEMBROKE & SOUTHFIELD	187.374
TOP OF HYD. S.E. COR. ARCHDALE & PEMBROKE	186.664
TOP OF HYD. S.W. COR. OAKFIELD & PEMBROKE	184.604

NOTE: At (A) Construct 8. Sta. 18"x12" Y-Basins Complete & connected to existing outlets as shown.

At (C) Adjust tops of four Existing Manholes.

