

CARD NO. 325 T-11
 AP-3-108

INDIA TOPO NO. 63	INDIA TOPO NO. 105
NUMBER OF SHEETS	SHEET NO.

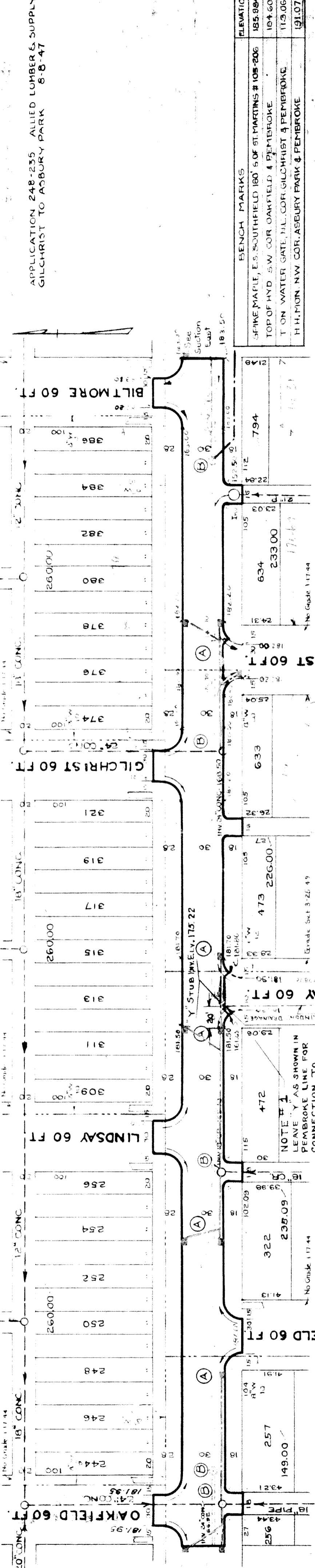
NAME OF STREET: PEMBROKE
 FROM: W.P.L. OF OAKFIELD
 TO: E.P.L. OF BILTMORE

DESIGNED BY: <i>W. J. ...</i>	DATE: 1-20-44
DRAWN BY: <i>A. P. ...</i>	DATE: 2-2-44
CHECKED BY: <i>W. J. ...</i>	DATE: 2-2-44
APPROVED BY: <i>W. J. ...</i>	DATE: 2-2-44

QUANTITIES	LOTS	CITY	DATE	PLAN	AREA	PERCENTAGE	REMARKS
PAVING	194	671	194	AF	155.09	77.54	
SEPARATE CURB	1523	168	168	AF	488.00	244.00	
SEPARATE SIDEWALK	3110	380	380	AF	2043.09	1071.54	
SEPARATE DRIVE	360	288	288	AF	1071.54	1071.54	
SEPARATE WALK	3	2	2	AF			
SEPARATE SIDEWALK	4	5	5	AF			

JOB NO.	BLUE PRINT NUMBER	DATE	REVISIONS

REVISIONS: 1. Change in width of sidewalks to 5 feet.
 2. Change in width of curbs to 18 inches.
 3. Change in width of drives to 12 feet.
 4. Change in width of walks to 6 feet.
 5. Change in width of side walks to 6 feet.
 6. Change in width of side walks to 6 feet.
 7. Change in width of side walks to 6 feet.
 8. Change in width of side walks to 6 feet.
 9. Change in width of side walks to 6 feet.
 10. Change in width of side walks to 6 feet.



BENCH MARKS	ELEVATION
SPRUE MAPLE, E.S. SOUTHFIELD 180' S OF ST. MARTINS # 105-206	185.984
TOP OF HYD. S.W. COR. OAKFIELD & PEMBROKE	184.604
T. ON WATER GATE, N.L. COR. GILCHRIST & PEMBROKE	115.060
H.H. PION NW COR. ASBURY PARK & PEMBROKE	191.072

NOTE: At (A) Existing 9 Sid. 18"x12" Y Basins Complete & connect to existing M.H.s. as shown.
 At (B) Adjust tops of 5 Existing Manholes.

