

SEWER	C-324A	C-390	C-587	C-739B
REVISIONS	C-325	C-524	C-733	C-938
	C-326A	C-585	C-739	C-1608
	C-327	C-586	C-739A	

NOTE: BEFORE STARTING CONSTRUCTION CONTRACTOR MUST CHECK WITH UTILITIES FOR LOCATIONS OF EXISTING STRUCTURES WHETHER OR NOT INDICATED ON PLANS.

PLAN SCALE DISTORTED

LOTS & ALLEYS 1"=50'

STREET WIDTHS 1"=50'

DRAINAGE COMPLETED

PAVING COMPLETED

QUANTITIES	ESTIMATED	FINAL
EXCAVATION CU. YDS.		
NEW CURB LIN. FT.		
PAVING SQ. YDS.		
SIDEWALK SQ. FT.		
MANHOLES ADJUST		
CONSTRUCT ADJUST		
BASINS CONSTRUCT		
SEWERS 12" LIN. FT.		

HOR. SCALE 1"=100'	BOOK 1003	PAGE 70
VER. SCALE 1"=2'	DATE LEVELS 3-20-51	DATE DRAWING 5-7-51
PLAN C.J.F.	PROFILE C.F.	COMPUTED
CHECKED A.B.	GRADE	CHECKED
LOT# 21	1810	13
CITY 21	37300	18650
TOTAL 21	1883	13
	75507	18650
	94157	18650

DESIGNED BY **Fleming**

DRAWN BY

TRACED BY

CHECKED BY

APPROVED

ENGINEER OF STREETS

CITY ENGINEER

CARD NO. 51-9

INDEX TOPO NO. 71

INDEX NO. 123

RECORD NO.

NAME OF STREET **W.P.L. NORTHROP**

FROM **265' E. OF W.P.L. LAHSER**

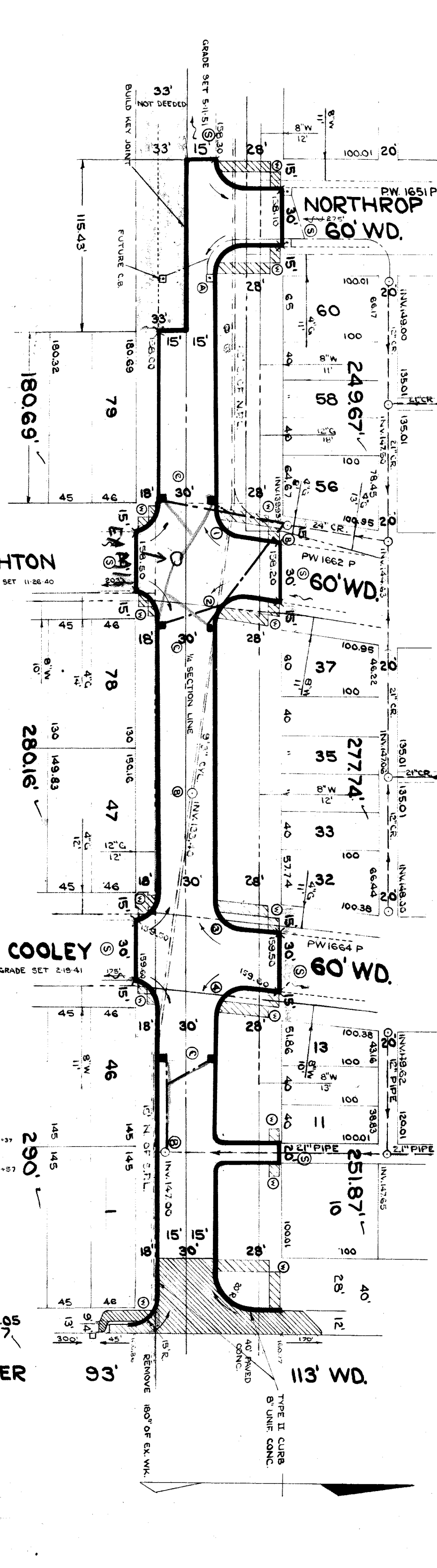
TO **DRAINAGE ONLY**

ONE COURSE CONCRETE - INTEGRAL CURB

WIDTH **30'**

ASSIGN. NO. 325 AT-18

PETITION NO. 5059



GR.	158.3	158.84	WK.
GR.	158.2	158.67	WK.
WK.	158.09	158.58	WK.
WK.	158.69	158.36	WK.
WK.	158.75	158.36	WK.
WK.	158.84	158.32	WK.
WK.	158.79	158.53	WK.
WK.	159.24	159.08	WK.
WK.	159.58	159.53	WK.
WK.	159.67	159.72	WK.
WK.	159.68	159.83	WK.
WK.	160.33	160.18	WK.
WK.	160.38	160.38	WK.
WK.	160.46	160.46	WK.
WK.	160.93	160.52	WK.
WK.	161.23	160.63	WK.

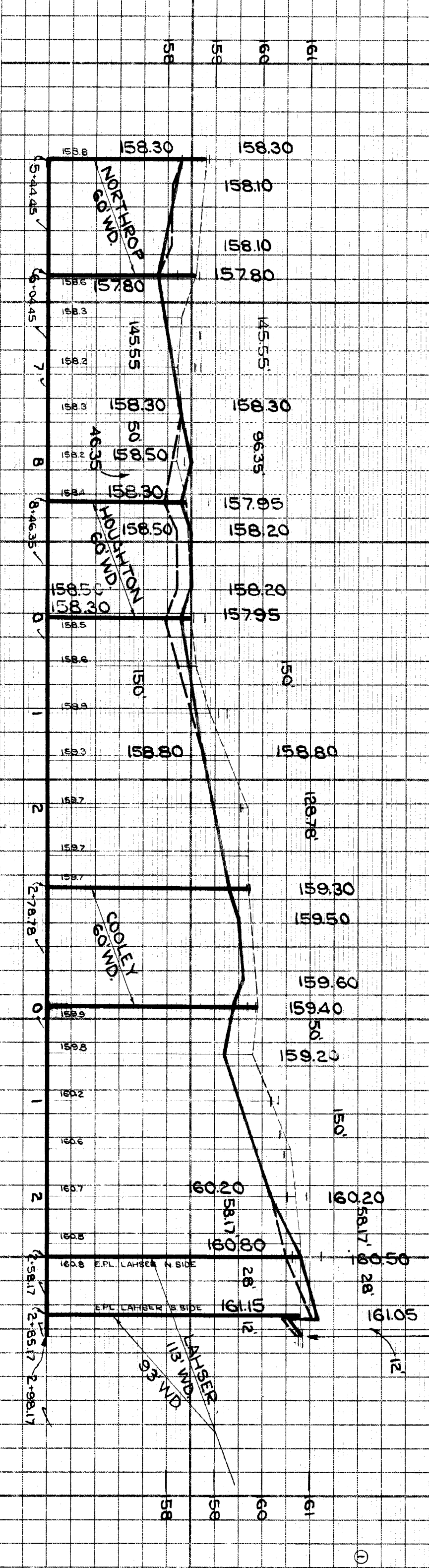
DPW TO INSTALL DRAINAGE; CONTRACTOR TO ADJUST

PROF CURBS 161.15

PAV'T. 160.86

161.05

160.77



CURVE	DATA
① Δ=82°09'11"	R=15'
② Δ=67°50'49"	R=15'
③ Δ=85°14'	R=15'
④ Δ=94°58'20"	R=15'

TREE SCHEDULE

7-00' 11-4' 25' S. of NPL

7-00' 11-6' 128' S. of NPL

CONTRACT APPROVAL

PET. 5059

S. HECHTMAN

1-30-51

25% P.D.

BENCH MARKS

PLBM 123-257A S.E. COR. REDFERN & PEMBROKE

ARR. ON HYD. N.W. COR. NORTHROP & PEMBROKE

ARR. ON HYD. S.E. COR. COOLEY & PEMBROKE

PLBM 115-251 N.E. COR. PEMBROKE & LAHSER

ELEV.

158.132

161.84

162.18

160.479