

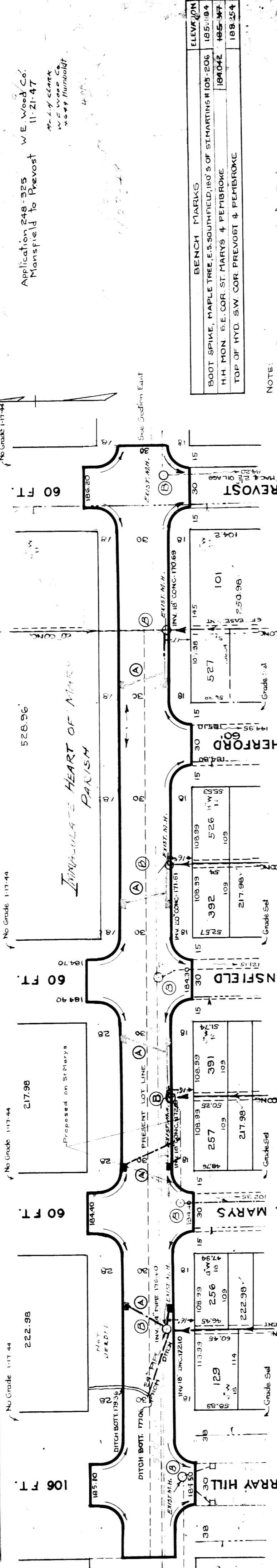
DESIGNED BY *A. V. Inberg*
 DRAWN BY _____
 TRACED BY _____
 CHECKED BY _____
 APPROVED *E. L. ...*
 ENGINEER OF STREETS
Maxwell R. ...
 ASST. CITY ENGINEER

BOOK 1420 PAGE 14	DATE 2-2-44	COMPUTED	909.92
PLAN	A.F.	CHECKED	R&K
CHECKED	5/3	GRADE	
LOTS	4	LENGTH	1819.84
CITY	7	LENGTH	692.00
TOTAL		LENGTH	2511.84
COST ADVERTISING BLANKS		CITY	
LORI INSPECTION		TOTAL	

QUANTITIES	LOTS	CITY	LOTS	CITY
EXCAVATION	1985	1020		
STRAIGHT CURB NEW	1820	192		
OLD CURB RESEAL			471	
CIRCULAR CURB			2159	
PAVING	3640			
CONCRETE BASE			4	
MHS - ADJ.			8	
BASES - CONST.			2	
SEWERS 12" (L. FT.)			185	

JOB NO.	PROGRESS	START	FINISH
BLUE PRINT ISSUED FOR			
GRADE ONLY			
CATCH BASINS			
PAVING CLASS			
DEPT. OF WATER SUPPLY			
GAS CO.			

REVISIONS: Plan & Grade change 5/3
 BENCH MARK REVIEWED 11/27
 H.H. Popl. S.E. Cor. St. Marys & Pembroke



BENCH MARKS

BOOT SPIKE, MAPLE TREE, E.S. SOUTHWEST COR. OF ST. MARYS & ST. MARTINS #105-206	185.084
H.H. MON. E.E. COR. ST. MARYS & PEMBROKE	184.042
TOP OF HYD. S.W. COR. PREVOST & PEMBROKE	189.354

NOTE:
 At (A) Construct 10 Std. 18"x12" Y Basins Complete connect to existing M.H.s. as shown.
 At (B) Adjust Tops of Existing Manholes.

