

PEMBROKE

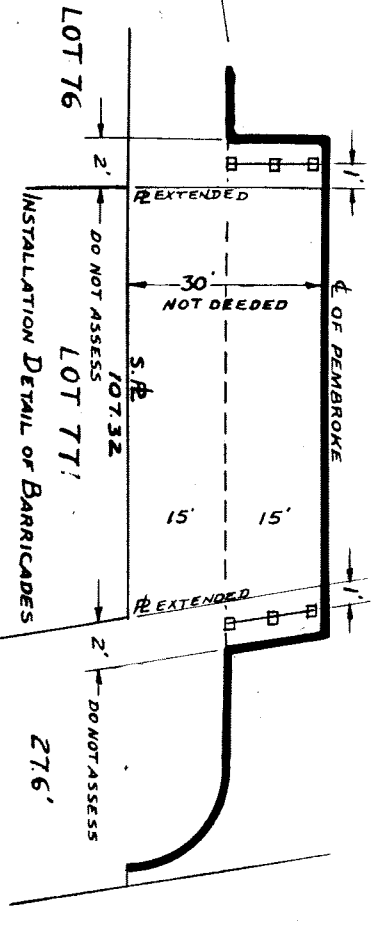
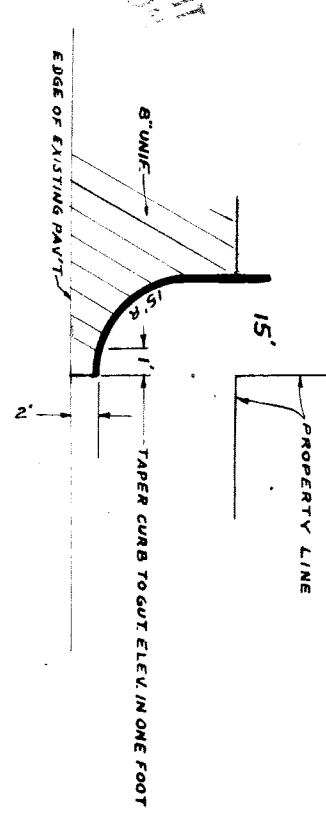
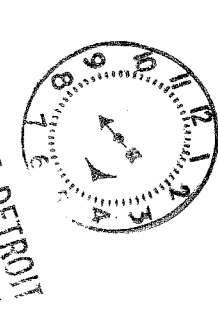
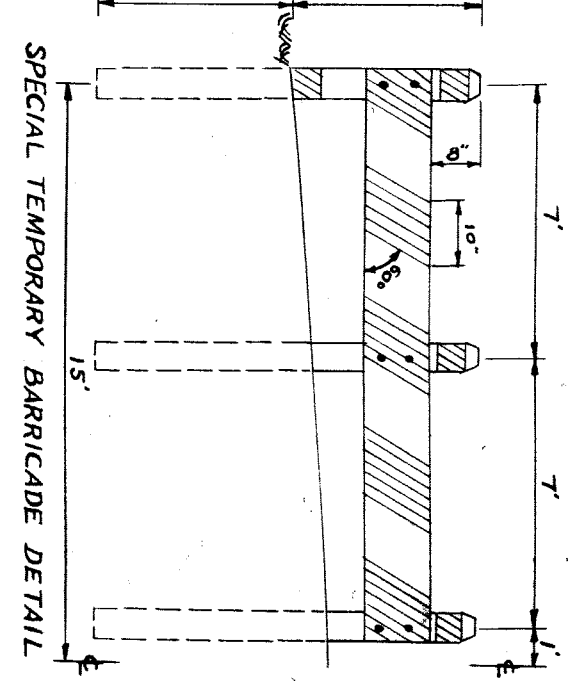
FROM W.P.L OF FENTON TO 276' E. OF W.P.L OF TELEGRAPH RD.

NAME OF STREET
 FROM W.P.L OF FENTON TO 276' E. OF W.P.L OF TELEGRAPH RD.
 TYPE OF PAVEMENT 8 6 8 ONE COURSE CONCRETE INTEGRAL CURB 30
 8" UNIFORM AT STREET INTERSECTION EXCEPT AS NOTED

BENCH MARKS
 PROP. MON. N.W. COR. FARGO STA. 1154
 PROP. MON. N.W. COR. FARGO & WOODBINE
 P.L.B.M. #123-251 N.E. COR. PEMBROKE & FIVE POINTS
 P.L.B.M. #123-251A N.E. COR. PEMBROKE & GRANDVIEW
 B.M. TOP OF HYD. S.W. COR. NORFOLK & FENTON

ELEV.
 153.26
 151.133
 159.272
 156.945
 157.85

NOTE: FOR SYMBOLS (A) ECT SEE STD DETAIL DRWG C-327
 HORIZONTAL CONTROL BY EXISTING MONUMENTS.
 DRAINAGE TO BE INSTALLED BY D.P.W. CONTRACTOR TO ADJUST DRAINAGE WHERE NECESSARY



DATE	REVISIONS
5-11-50	SEWER LINE ADDED J.K.
5-22-56	GAS LINES ADDED J.K.
5-23-58	INVERT ON PROP. SEWER CHANGED (WEST OF WOODBINE)

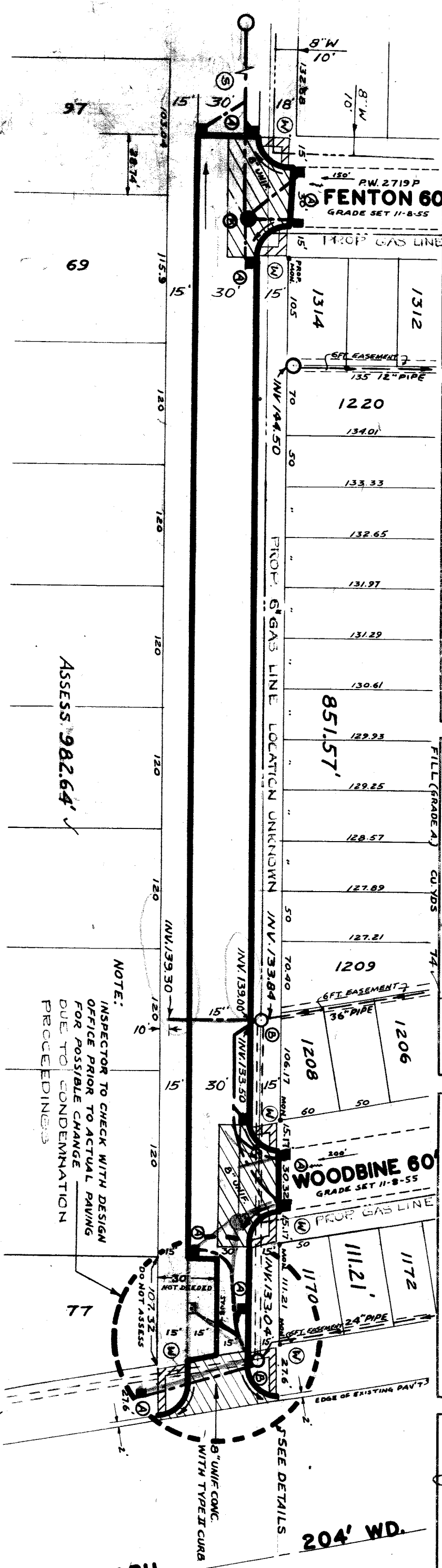
BEFORE STARTING CONSTRUCTION CONTRACTOR MUST CHECK WITH UTILITIES FOR LOCATIONS OF EXISTING STRUCTURES WHETHER OR NOT INDICATED ON PLANS.	CONTRACTOR MUST CHECK WITH UTILITIES FOR LOCATIONS OF EXISTING STRUCTURES WHETHER OR NOT INDICATED ON PLANS.
LOT'S & ALLEYS	1" = 100' ✓
STREET WIDTH	1" = 50' ✓
VERTICAL	1" = 2' ✓
DRAINAGE COMPLETE	8-29-56
PAVING COMPLETED	

QUANTITIES	ESTIMATED	2
EXCAVATION	CU. YDS.	793
NEW CURB	LI. FT.	66
PAVING	SQ. YDS.	3355
6" CONC. DRIVE	SQ. FT.	499
TEST CORES		100
SIDEWALK	SQ. FT.	4
MANHOLES	NO. CONSTRUCT	1016
BASINS	ADJUST	35
SEWER-12"	LI. FT.	11
FILL (GRADE A)	CU. YDS.	10

SECTION NO.	6704 ✓	SECTION DATE	8-23-55 ✓
ASSIGNMENT NO.	325 CG-20	GROUP	J.K.
BOOK NO.	1737 P. 56 ✓	LEVEL DATE	OCT. 18, 1955
TOTAL	2119.28 ✓	LENGTH	1059.64 ✓
DATE OF DRAWING	2-17-56 ✓		

PLAN	G.B.	MADE BY	G.B.
PROFILE	G.B.	CHECKED BY	J.K.
ESTIMATE	G.B.	ENGINEER OF STREETS	W.D.M.
SEWER APPROVED	G.B.	SEWER ENGINEER	W.D.M.
FINAL CHECK	G.B.	CITY ENGINEER	W.D.M.

TOTAL	123
INDEXED	



3-8" x 6-5" POSTS TO BE PAINTED WITH 2 COATS OF WATERPROOF PAINT (CITY OF DETROIT STD.) IN ALTERNATING 6" STRIPS OF BLACK AND YELLOW. POSTS ARE NOT TO BE IMBEDDED IN CONCRETE.
 1-2"x10"x14-8" PLANK PAINTED WITH 2 COATS OF WATERPROOF PAINT (CITY OF DETROIT STD.) IN ALTERNATING 10" STRIPS OF BLACK AND YELLOW.
 6- MILLS - 2 PER POST (300)

