

SEWER	REVISIONS	REVISED GRADE FROM STA. 1+50 W. OF FIELDING TO STA. 0+00
C-327	C-586	C-730B
C-326A	C-585	C-730A
C-325	C-524	C-133
C-324A	C-330	C-133

NOTE: BEFORE STARTING CONSTRUCTION CONTRACTOR MUST CHECK WITH UTILITIES FOR LOCATIONS OF EXISTING STRUCTURES WHETHER OR NOT INDICATED ON PLANS.

PLAN SCALE DISTORTED

LOTS & ALLEYS: 1" = 50'

STREET WIDTHS: 1" = 50'

2. BIRMS EAST OF FIELDING 3-13-43 DRAINAGE COMPLETED

PAVING COMPLETED

QUANTITIES	ESTIMATED	FINAL
EXCAVATION CU YDS		
NEW CURB LIN FT		
PAVING SQ YDS		
SIDEWALK SQ FT		
MANHOLES ADJUST		
BAZING ADJUST		
SEWER 12" LIN FT		
SEWER 18" LIN FT		

PLAN	REV	DATE	BY	CHKD
AR	1	3/11/24	J.E.	
AR	2	3/11/24	J.E.	

DESIGNED BY: R. Reid

DRAWN BY: R. Reid

TRACED BY: R. Reid

DATE: 3-25-46

BOOK: 916 PAGE: 60

W.P.L. OF BRAILE
ASSIST. ENGINEER

CITY ENGINEER'S OFFICE ... DIVISION OF PAVING DESIGN

STREET PAVING PLAN

PEMBROKE

W.P.L. OF BRAILE

W.P.L. OF STOUT (NORTH SIDE)

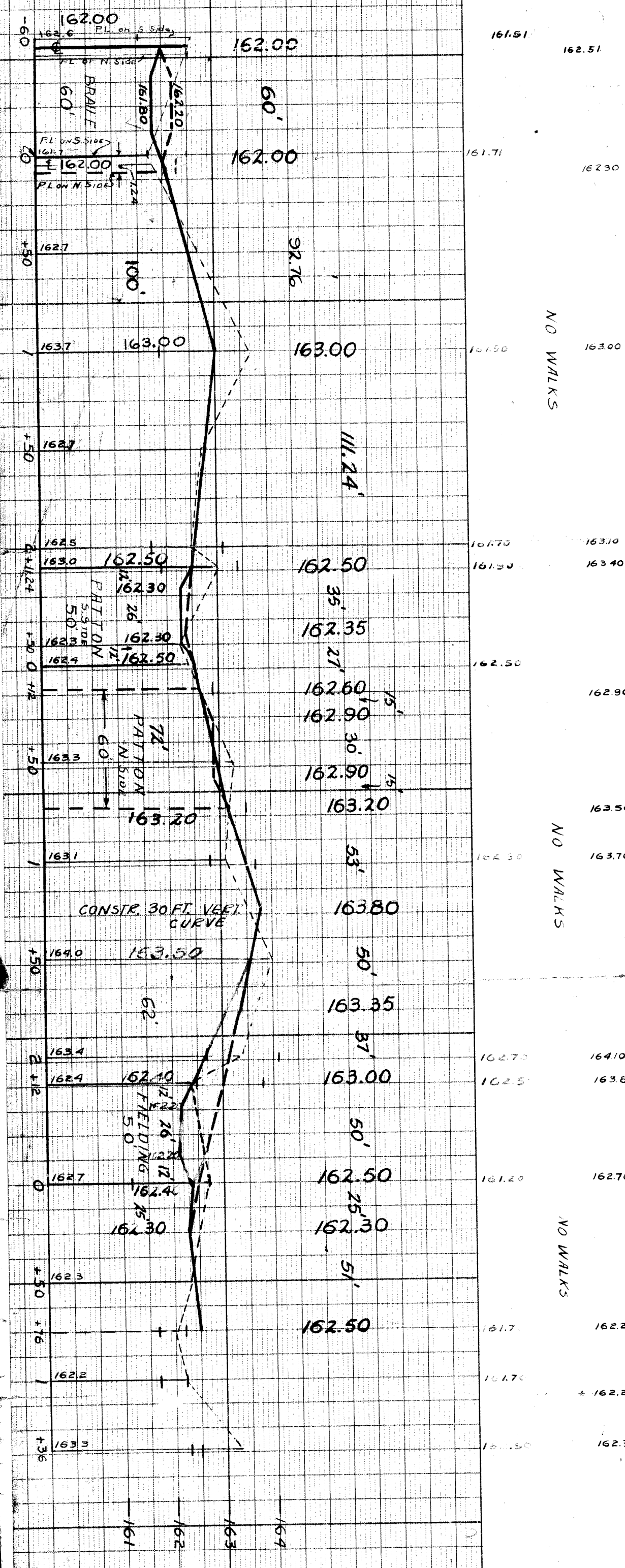
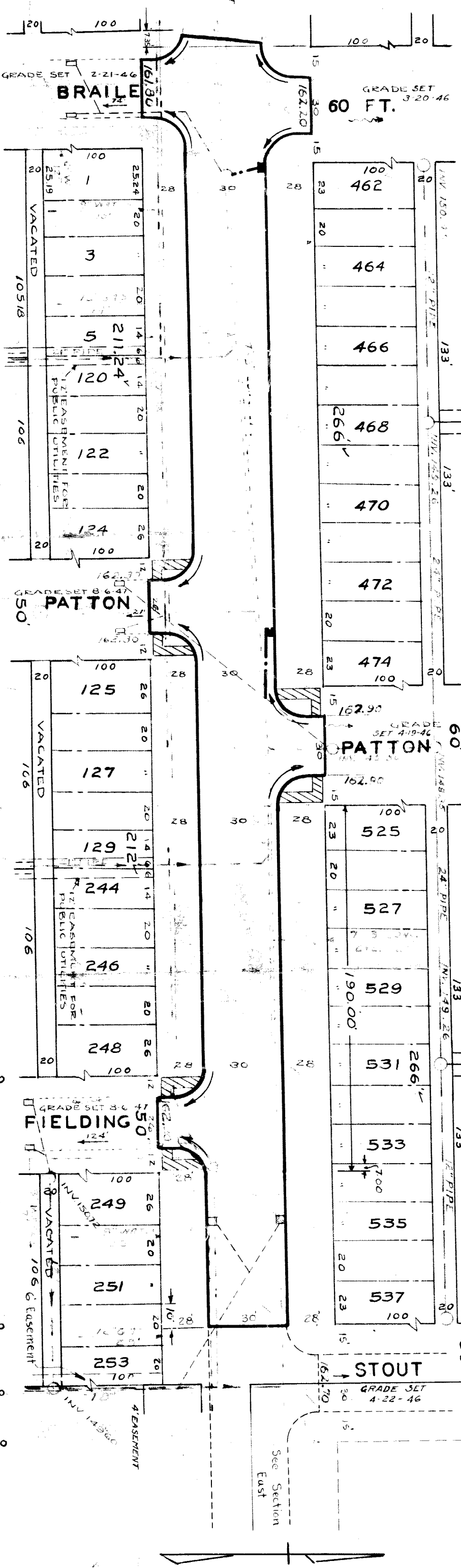
DRAINAGE

TYPE OF PAVEMENT: UNIFORM AT STREET INTERSECTIONS

30'

72 115

40357-10
A.P. (259-1/1)
7895



BENCH MARKS

PLBM #15-254 - NE COR. PEMBROKE & BURT	ELEV. 162.779
ARROW ON HYD. - SW COR. PEMBROKE & FLENSON	166.551
PLBM #15-254A - NE COR. PEMBROKE & BRAILE	162.454