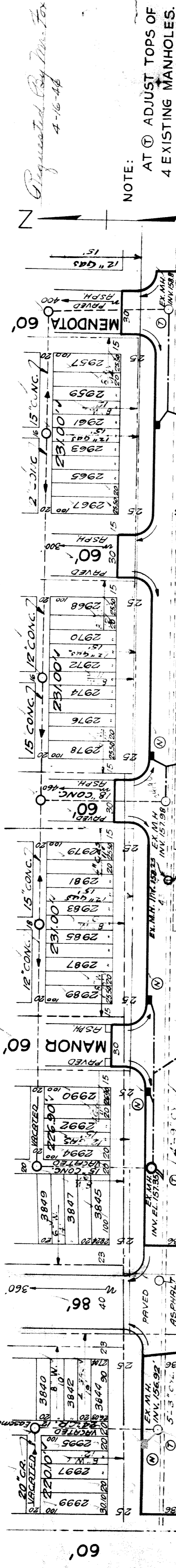


DESIGNED BY: D. TRATHEN
 DRAWN BY: [Signature]
 TRACED BY: [Signature]
 CHECKED BY: [Signature]
 APPROVED: [Signature]
 ENGINEER OF STREETS
 ASSIST. CITY ENGINEER

BOOK 1537 PAGE 22
 DATE 2-22-44
 PLAN: 1/2" = 100'
 VER. SCALE: 1" = 4'

PLAN	PROFILE	COMPUTED
CHECKED CAS.	GRADE	CHECKED
241045	241045	120523
360000	360000	180000
277045	277045	38823

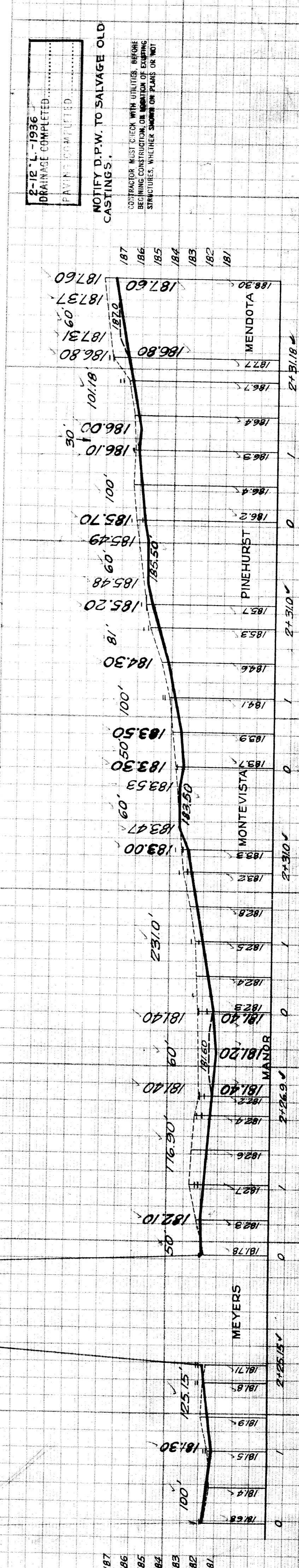
QUANTITIES	LOTS	CITY	LOTS	CITY	QUANTITIES	LOTS	CITY
EXCAVATION	2 637	710	2 411	120	STRAIGHT CURB NEW	2 411	120
OLD CURB RESET	-	283	-	283	CIRCULAR CURB	-	283
PAVING	4 821	1 284	2	2	CONCRETE BASE	4 821	1 284
M.Hs. ADJ.	3	4	5	4	M.Hs. ADJ.	3	4
C. Bs. const.	405	105	405	105	C. Bs. const.	405	105
SEWER 12" (UN. FT.)					SEWER 12" (UN. FT.)		



PLAN SCALE DISTORTED
 10' AND ALLEYS DIMENSIONS - 1" = 10'
 21' WIDTH & INTERSECTIONS - 1" = 10'

BENCH MARKS	ELEV.
BRASS CAP IN HANDHOLE N.E. COR. PEMBROKE/MEYERS	181.68
TOP OF HYD. N.E. COR. PEMBROKE & MANOR	185.029
BRASS CAP IN HANDHOLE N.E. COR. PEMBROKE & MONTEVISTA	183.279
SPIKE POLE S.E. COR. PEMBROKE & PINEHURST	187.982

NOTE:
 AT ③ ABANDON 2-12" L BASINS
 AT ④ CONSTRUCT 9 ST'D. 18" X 12"
 Y BASINS COMPLETE & CONNECT
 TO EXISTING MANHOLES AS SHOWN.



SEWER 24" CORR 24" 1/4
 INDEXED
 REVISIONS: Add to gaslines 1/14/44
 1/14/44
 1/14/44