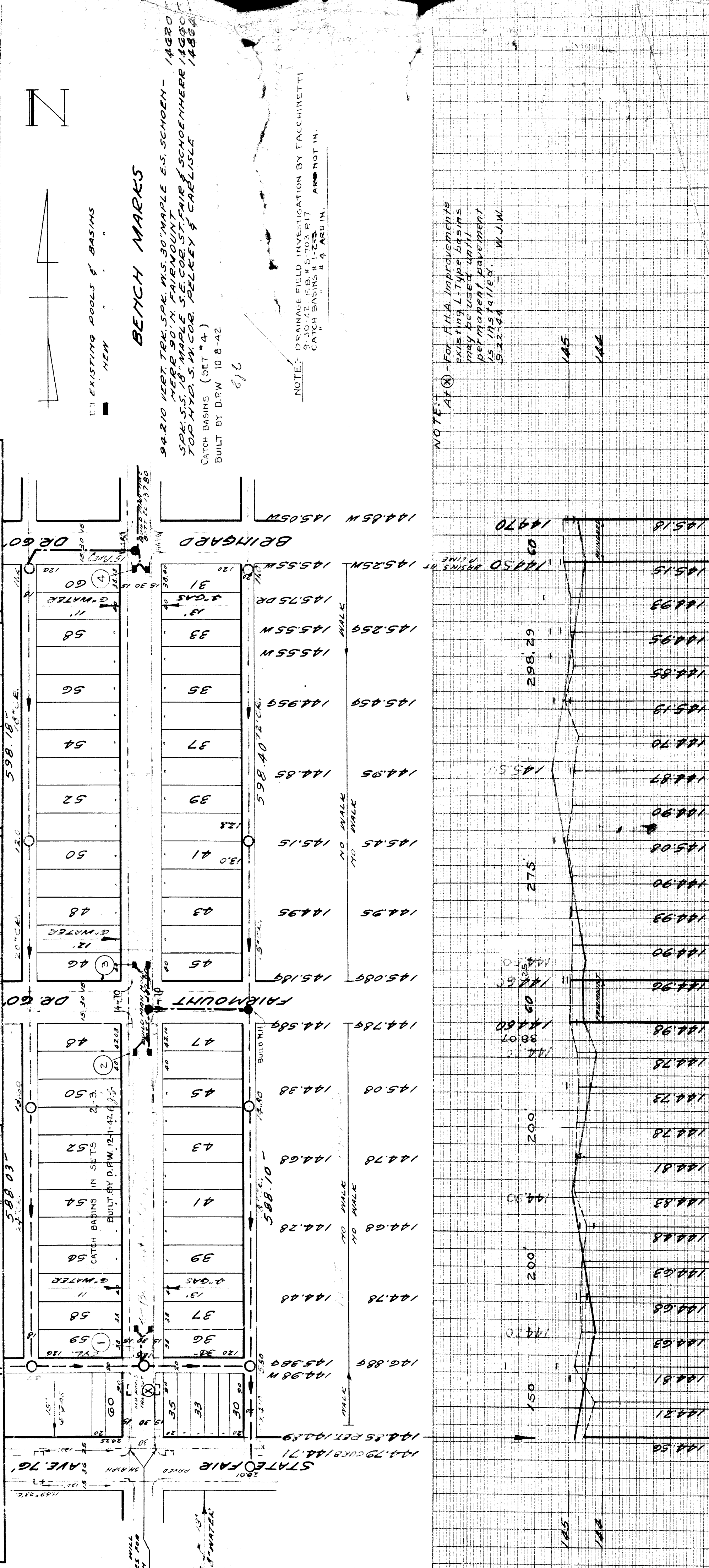


INDEX NO.	TOPO NO.	RECORD NO.
37	94	
DESIGNED BY: <i>[Signature]</i>		
DRAWN BY: <i>[Signature]</i>		
TRACED BY: <i>[Signature]</i>		
CHECKED BY: <i>[Signature]</i>		
APPROVED: <i>[Signature]</i>		
ENGINEER OF STREETS: _____		
ASST. CITY ENGINEER: _____		

JOB NO.		PROGRESS		QUANTITIES		LOTS		CITY		CITY		CITY		CITY		CITY	
BLUE PRINT ISSUED FOR:		DATE	START	FINISH	EXCAVATION	STRAIGHT CURB NEW	OLD CURB RESET	CIRCULAR CURB	PAVING	CONCRETE BASE	PAVING	CONCRETE BASE	PAVING	CONCRETE BASE	PAVING	CONCRETE BASE	PAVING
REVISIONS: - Drainage 9-22-44																	
For F.H.A. at (X) See Note																	



CONTRACTOR WILL RESET CIRCLES FOR 30 RETURN

EXISTING POOLS & BASINS
 NEW

BENCH MARKS

94.210 VERT. TRK. SPL. WS. 30" MAPLE E.S. SCHOEN - 14620
 50K. S.S. 18" MAPLE SE. COR. ST. FAIR & SCHOENHEER 14680
 TOP HYD. S.W. COR. PELKEY & CARLISLE
 CATCH BASINS (SET # 4)
 BUILT BY D.P.W. 10-8-42
 616

NOTE: DRAINAGE FIELD INVESTIGATION BY FACCHINETTI
 9-30-42 F.B. # 5-703, P.17 ARE NOT IN.
 CATCH BASINS # 1-2, 3, 4 ARE IN.
 # 4 ARE IN.

NOTE: For F.H.A. Improvements existing L-Type basins may be used until permanent pavement is installed. W.J.W. 9-22-44