

SEWER *11-17-47*

REVISIONS **REVISION IN DRAINAGE + GRADE CONSTANCE TO JOY RD.**

11-17-47

SUPPLEMENTARY DETAIL:

DRAWING NO.

NOTE:
BEFORE STARTING CONSTRUCTION CONTRACTOR MUST CHECK WITH UTILITIES FOR LOCATIONS OF EXISTING STRUCTURES WHETHER OR NOT INDICATED ON PLANS.

PLAN SCALE DISTORTED

LOTS & ALLEYS 1" = 100'

STREET WIDTHS 1" = 50'

DRAINAGE COMPLETED

PAVING COMPLETED

QUANTITIES	ESTIMATED		FINAL	
	LOTS	CITY	LOTS	CITY
EXCAVATION CU. YDS.	2	047	2	292
NEW CURB LIN. FT.	2	319	2	208
PAVING 6" 10' SQ. YDS.	3	551	3	410
SIDEWALK SQ. FT.	-	-	-	144
MANHOLES ADJUST	1	-	1	-
CONSTRUCT	-	-	-	-
ADJUST	-	-	-	-
SEWERS 12" LIN. FT.	5	-	1	-
SEWERS 18" LIN. FT.	289	-	45	-

VER. SCALE	1" = 2'	DATE	1-27-45
PLAN	L.G.V.T.	PROFILE	L.G.V.
CHECKED	5-5	GRADE	R-2
COMPUTED	5-5	CHECKED	5-5
DATE	1-27-45	BOOK	1581
PAGE	8		

DESIGNED BY **R-3**

DRAWN BY **L.G. VANTYLL**

TRACED BY

CHECKED BY **G-5**

APPROVED **J. J. Patton**
ENGINEER OF STREETS

W. R. ...
ASSIST. CITY ENGINEER

CARD NO. **78109**

INDEX TO NO. **78109**

NAME OF STREET **N.P.L. OF CONSTANCE AVE.**

FROM **33' N. OF JOY ROAD.**

TO **30836'**

TYPE OF PAYMENT **30836'**

APPLICATION **348-309** **GRIFFIN BLDG. & REALTY CO.**

CONSTANCE TO JOY 10-17-47

DEPARTMENT OF PUBLIC WORKS DETROIT

CITY ENGINEER'S OFFICE - DIVISION OF PAVING DESIGN

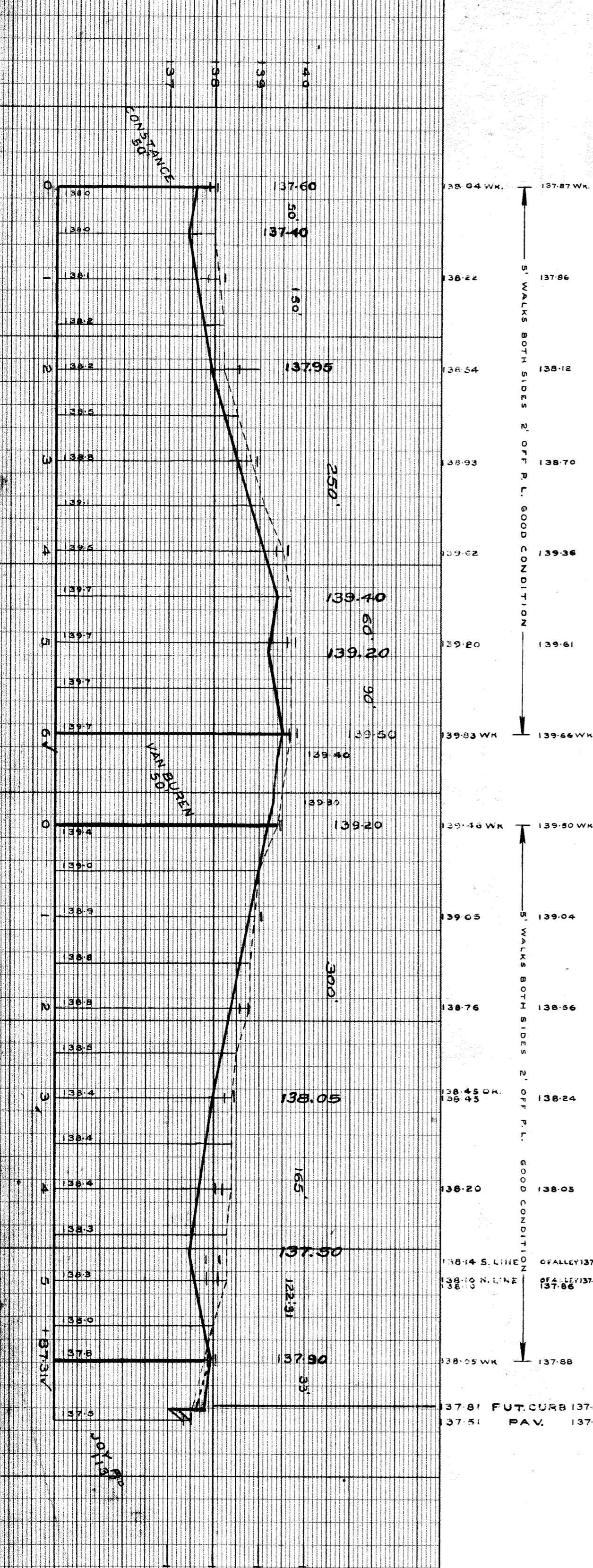
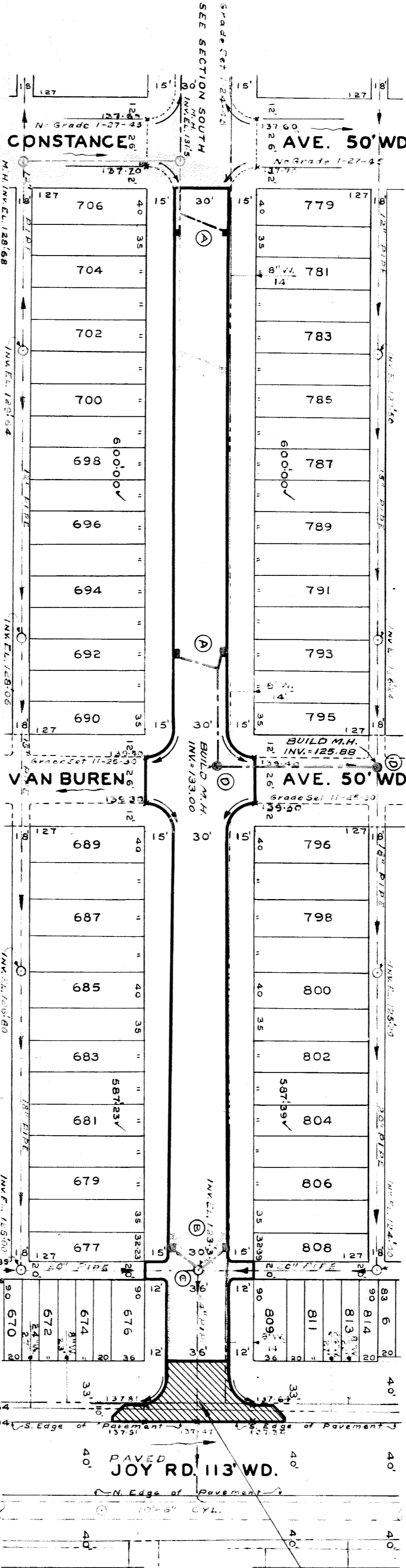
STREET PAVING PLAN

PATTON

AR. 61-115 D.

NUMBER OF SHEETS **1**

SHEET NO. **1**



NOTE -

- AT (A) CONSTRUCT 4 STD. 18"x12" -Y- CATCH BASINS. COMPLETE AND CONNECT TO OUTLETS AS SHOWN.
- AT (B) CONSTRUCT 2 STD. 18"x12" -Y- CATCH BASINS COMPLETE AND CONNECT TO EXIST. M. HOLE AS SHOWN.
- AT (C) ADJUST TOP OF 1 EXIST. M. HOLE.
- AT (D) CONSTRUCT 2- STANDARD MANHOLES

PRECISION LEVEL #110293 - BOLT SPIKE IN S. SIDE OF A 30-INCH MAPLE TREE ON N. SIDE OF JOY RD. 50' W. OF PATON.

ARROW ON HYDRANT W. SIDE OF PATTON 235' N. THREE VERTICAL NAILS IN W. FOOT OF A 30-INCH OAK AT N.E. COR. OF PATON & CONSTANCE. 141'-58" 138'-95"

BENCH MARKS

MARK	ELEV.
127.5	139-297
127.5	141-58
127.5	138-95

CONSTRUCT RETURN WITH 10' WIDENING SLAB & MAKE 10' THICK. SEE STD. DETAIL SH. C-371.