

SEWER INDEXED	JOB NO.	PROGRESS	QUANTITIES	LOTS	CITY	LOTS	CITY	DATE	DESIGNED BY
REVISIONS:	BLUE PRINT ISSUED FOR	START	EXCAVATION					June 21, 1940	L. J. Kratz
	GRADE ONLY	FINISH	STRAIGHT CURB NEW						TRACED BY
	CATCH BASINS		OLD CURB RESET						L. J. Kratz
	PAVING-CLASS		CIRCULAR CURB						CHECKED BY
	DEPT. OF WATER SUPPLY		PAVING						K. J. Kennedy
	GAS CO.		CONCRETE BASE						APPROVED
									ENGINEER OF STREETS
									ASS'T. CITY ENGINEER

DEPARTMENT OF PUBLIC WORKS DETROIT  
 CITY ENGINEERS OFFICE ... DIVISION OF PAVING DESIGN  
**STREET PAVING PLAN**

NAME OF STREET: PATTON 50' WD.  
 FROM: SEVEN MILE ROAD  
 TO: VASSAR AVE.

TYPE OF PAVEMENT: \_\_\_\_\_

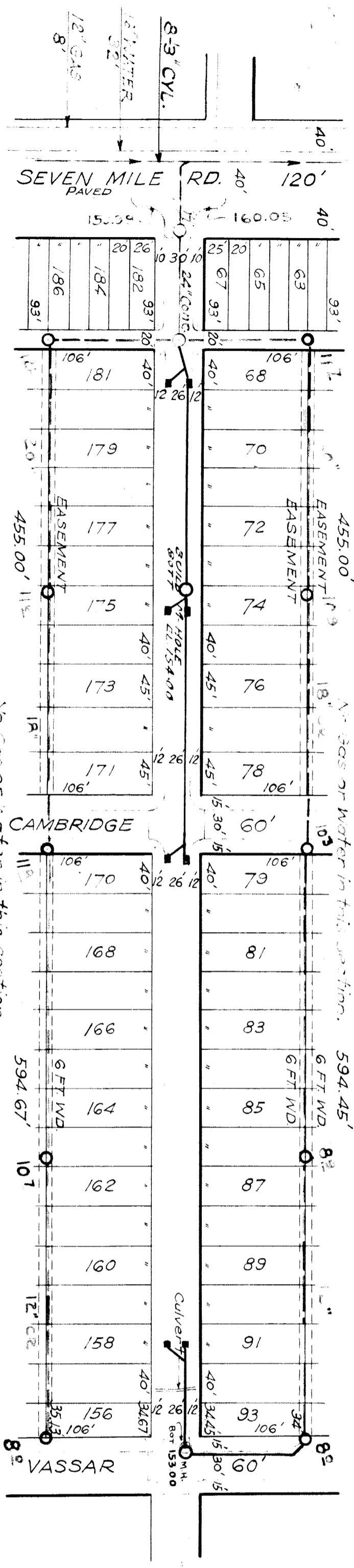
RECORD NO. \_\_\_\_\_

CARD NO. \_\_\_\_\_

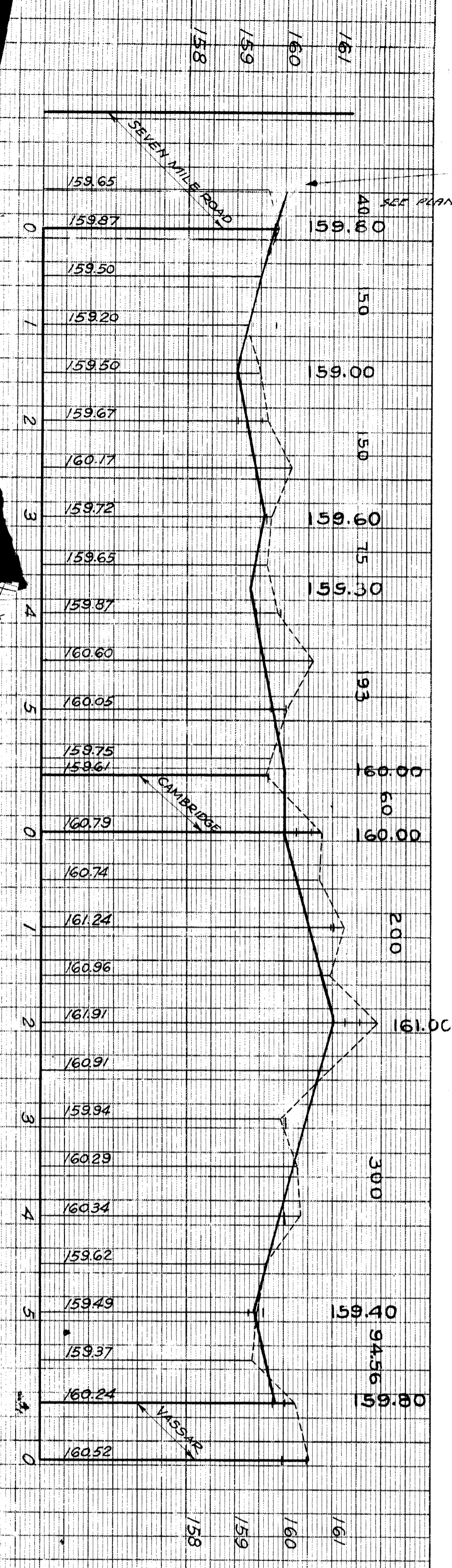
INDEX TO NO. 72 115

NUMBER OF SHEETS 1

SHEET NO. 1



STATION	ELEVATION	REMARKS
0	159.52	159.42
1	159.82	(End of Walk) 159.02 at 95 159.32
2	159.12	159.52
3	159.62	159.62
4	159.42	159.92
5	159.72	160.12
6	159.66	160.06
7	160.26	160.56
8	161.16	160.96
9	161.26	161.56
10	160.19	160.19
11	160.09	160.09
12	159.59	159.29
13	159.79	160.09
14	160.49	159.99



Existing Pools and Basins.  
 ■ New

B.M. Vertical Nail S.W. side of 18" Maple on N. side of Seven Mile Rd. 35' E. of Patton.  
 B.M. Two Nails in 15" Elm on W. side of Patton 50' S. of Vassar.

DESIGNED AND DRAWN BY  
 L. J. KRATZ

