

DEPARTMENT OF PUBLIC WORKS DETROIT  
 CITY ENGINEER'S OFFICE --- DIVISION OF PAVING DESIGN  
**STREET PAVING PLAN**

NAME OF STREET: **PATTON**  
 FROM: **20' S. of N.P.L. of WARREN AVE.**  
 TO: **N.P.L. of SAWYER AVE.**  
 TYPE OF PAVEMENT: **CONCRETE**  
 WIDTH: **22'30"±36"**

CARD NO. **78 109** INDEX TO P.O. NO. **95** SHEET NO. **2**

DESIGNED BY: **SEXTON**  
 DRAWN BY: **L. G. VAN TUYL**  
 CHECKED BY: **R3**  
 APPROVED BY: *[Signature]*  
 ENGINEER OF STREETS  
 ASSIST. CITY ENGINEER

HOR. SCALE 1" = 100' VER. SCALE 1" = 2'  
 BOOK 1881 PAGE 11 DATE 1-11-45  
 PLAN LG.V.T. 95 PROFILE GRADE R3  
 COMPUTED 4.97 CHECKED 5.5  
 LENGTH 1 276 14  
 CITY 2 594 13 LENGTH 297 06  
 TOTAL 2 3 14-6 40 LENGTH 1 573 20  
 LOT# CITY

QUANTITIES	ESTIMATED	CITY	FINAL	CITY
EXCAVATION CU. YDS.	1 039	512		
NEW CURB LIN. FT.	2 592	567		
PAVING SQ. YDS.	4 171	1 287		
SIDEWALK SQ. FT.	3	1		
MANHOLES ADJUST	1	1		
BASINS ADJUST	9	3		
SEWERIS' LIN. FT.	277	35		
SEWERIS' LIN. FT.				

NOTE: BEFORE STARTING CONSTRUCTION CONTRACTOR MUST CHECK WITH UTILITIES FOR LOCATIONS OF EXISTING STRUCTURES WHETHER OR NOT INDICATED ON PLANS.

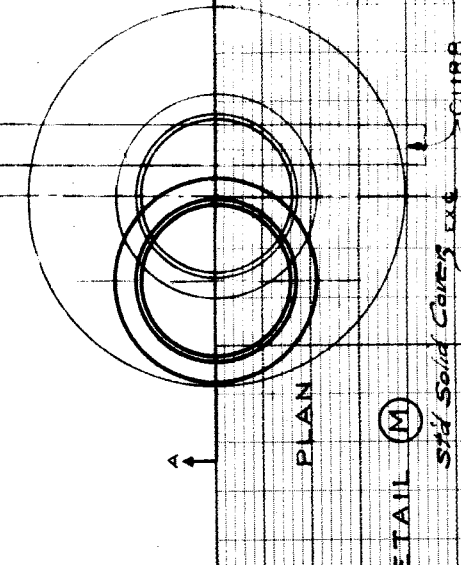
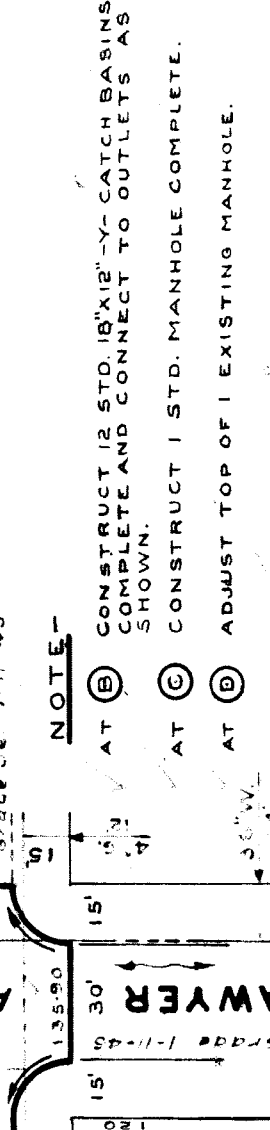
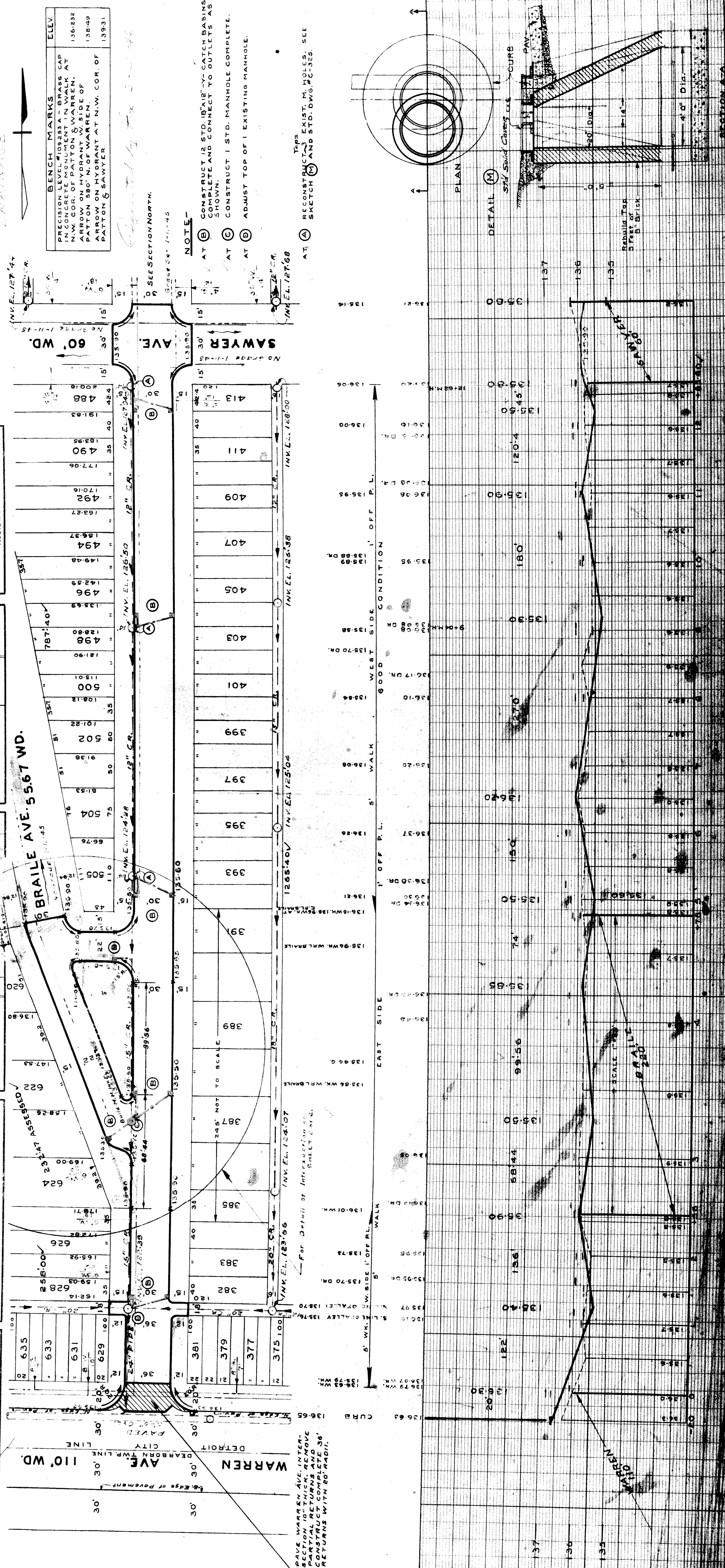
PLAN SCALE DISTORTED

LOTS & ALLEYS 1" = 100'

STREET WIDTHS 1" = 50'

DRAINAGE COMPLETED

PAVING COMPLETED



SEWER REVISIONS

635  
633  
631  
629

381  
379  
377

375 100

PAVE WARREN AVE. INTERSECTION TO 10" THICK, REMOVE CURBS, RETURN AND COMPLETE 36' RETURNS WITH 60 RADII.

DEARBORN CITY DETROIT

SECTION A-A