

CONTRACT NO.

DEPARTMENT OF PUBLIC WORKS (ROIT)
CITY ENGINEER'S OFFICE ... DIVISION OF PAVING DESIGN
STREET PAVING PLAN

ORLEANS

FROM 13.95' S. S.P.L. ANTIETAM (WEST SIDE)
TO 18.14' N. OF S.P.L. GRATIOT

23 B SHEETS

30' 8.36'

CARD NO. 4 INDEX TO PLAN NO. 38 INDEX TO PLAN NO. 39

DESIGNED BY ETICKSON
DRAWN BY J. KING
TRACED BY BEHN
CHECKED BY [Signature]
APPROVED [Signature]
CITY ENGINEER

BOOK	1692	PAGE	69
LEVELS	9-52	DATE	11-7-52
PLAN	J.K.	COMPUTED	G.B.
CHECKED	J.E.	CHECKED	M.L.
LOT	3L	LENGTH	
CITY	2L	LENGTH	1094.11
TOTAL	2L	LENGTH	
LOTS		LENGTH	

QUANTITIES	ESTIMATED	FINAL
ELEVATION	CU. YDS.	CU. YDS.
PAVING	BO. YDS.	BO. YDS.
SIDEWALK	SO. FT.	SO. FT.
MANHOLES	ADJUST	ADJUST
BASINS	ADJUST	ADJUST
SEWER	CONSTRUCT	CONSTRUCT
SEWER	CONSTRUCT	CONSTRUCT

NOTE: BEFORE STARTING CONSTRUCTION CONTRACTOR MUST CHECK WITH UTILITIES FOR LOCATIONS OF EXISTING STRUCTURES WHETHER OR NOT INDICATED ON PLANS.

PLAN SCALE DISTORTED

LOTS & ALLEYS 1"=60'

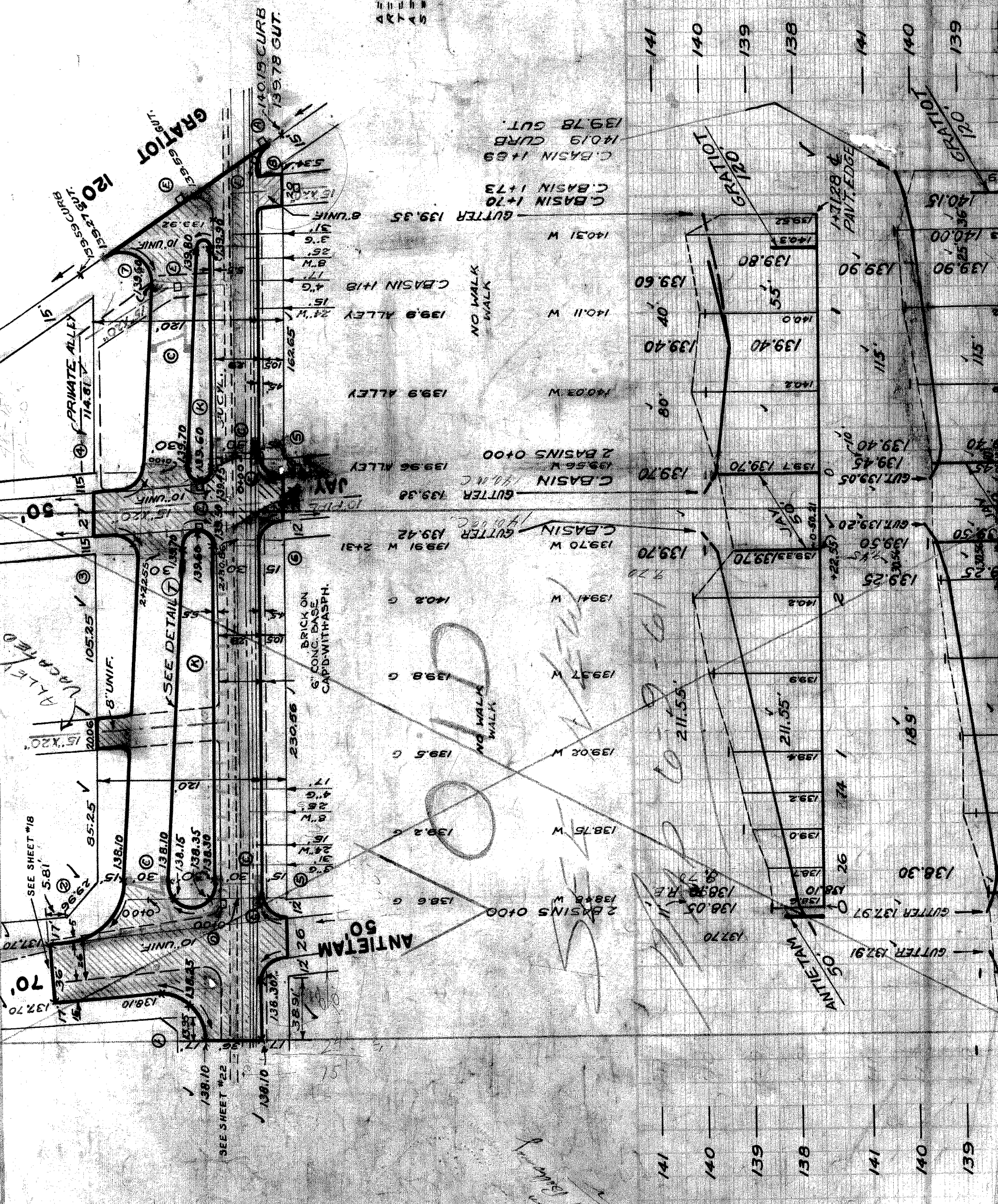
STREET WIDTHS 1"=60'

DRAINAGE COMPLETED

PAVING COMPLETED

SEWER	REVISIONS	REVISIONS
C-390	C-390	C-390
C-391	C-391	C-391
C-392	C-392	C-392
C-393	C-393	C-393
C-394	C-394	C-394
C-395	C-395	C-395
C-396	C-396	C-396
C-397	C-397	C-397
C-398	C-398	C-398
C-399	C-399	C-399

Preliminary



GRATIOT REDEVELOPMENT PROJECT

BENCH MARKS
B.M. ARR. ON HYD. N.W. COR. ORLEANS & CHESTNUT
B.M. ARR. ON HYD. S.E. COR. ORLEANS & ANTIETAM
B.M. ARR. ON HYD. S.W. COR. ORLEANS & GRATIOT

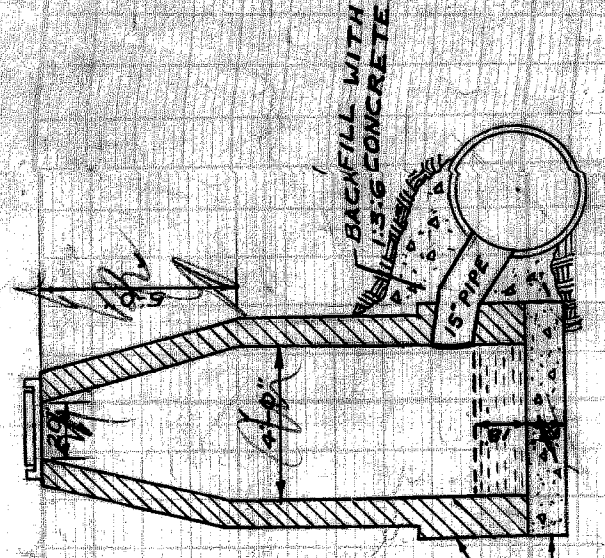
ELE. 140.61
141.37
143.04

NOTE: FOR SYMBOLS (A) ETC. SEE STANDARD DETAIL DRAWING C-327

LEGEND
PROPERTY & LOT LINES
PAV'T. PROP. ON ANOTHER SHEET
PAV'T. TO BE REMOVED
PROP. FASEMENT
PROR PAV'T.

NOTES:
AT (A) PAV'T. AREA TO BE EXCAVATED TO 6" BELOW CURB GRADE & FILLED WITH SUITABLE TOP SOIL SUBJECT TO APPROVAL OF THE FIELD ENGINEER.
ATTENTION FIELD ENGINEER: AFTER THIS PAV'T. HAS BEEN STAKED OUT AND PRIOR TO PAVING, NEW LEVEL SECTIONS ARE TO BE TAKEN AND SUBMITTED TO THE BUREAU OF PAVING DESIGN.

A=94'00x45"	A=82'30'x37"	A=94'00'x45"	A=85'59'x16"	A=127'x138"	A=55'x47"
R=30"	R=15"	R=15"	R=15"	R=20"	R=15"
T=32.74	T=35.085	T=17.097	T=23.157	T=40.73	T=7.833
A=29'x26"	A=25'x156"	A=25'x394"	A=24'x206"	A=44'x565"	A=14'x60"
S=237.31	S=251.56	S=66-0	S=59	S=368.80	S=9.585



Depth of manhole not known - approx. depth 13'