

301 7/24/45
 802-63749

SEWER ON 2140' 7/24/45

REVISIONS

SUPPLEMENTARY DETAILS

DRAWING NO.

NOTE: BEFORE STARTING CONSTRUCTION CONTRACTOR MUST CHECK WITH UTILITIES FOR LOCATIONS OF EXISTING STRUCTURES WHETHER OR NOT INDICATED ON PLANS.

PLAN SCALE DISTORTED

LOTS & ALLEYS 1" = 100'

STREET WIDTHS 1" = 50'

DRAINAGE COMPLETED

PAVING COMPLETED

QUANTITIES		ESTIMATED		FINAL	
EXCAVATION	CU. YDS.	LOTS	CITY	LOTS	CITY
NEW CURB	LIN. FT.				
PAVING	SQ. YDS.				
SIDEWALK	SQ. FT.				
MANHOLES	ADJUST				
BASINS	ADJUST				
SEWERS-12"	CONSTRUCT				
SEWERS-15"	CONSTRUCT				
	LIN. FT.				
	ADJUST				
	CONSTRUCT				
	LIN. FT.				

HOR. SCALE 1" = 100'		BOOK 1589 PAGE 33	
VER. SCALE 1" = 2'	DATE 1-23-45	PROF. H.E.	COMPUTED P.M.
CHECKED L.J.K.	GRADE L.J.K.	CHECKED R.E.R.	
LOTS 2L 4280.50	LENGTH 2140.25		
CITY 2L 2800	LENGTH 14.00		
TOTAL 2L 4308.50	LENGTH 2154.25		
	LOTS		
	CITY		

DESIGNED BY L.J.K.

DRAWN BY H.K. EBERT

TRACED BY "

CHECKED BY L.J.K.

APPROVED *[Signature]*

ENGINEER OF STREETS

ASST. CITY ENGINEER

CARD NO.

INDEX TOPO NO. 71

INDEX NO. 123

RECORD NO.

NAME OF STREET NORTHROP

FROM 14 S. OF N.P.L. SEVEN MILE RD.

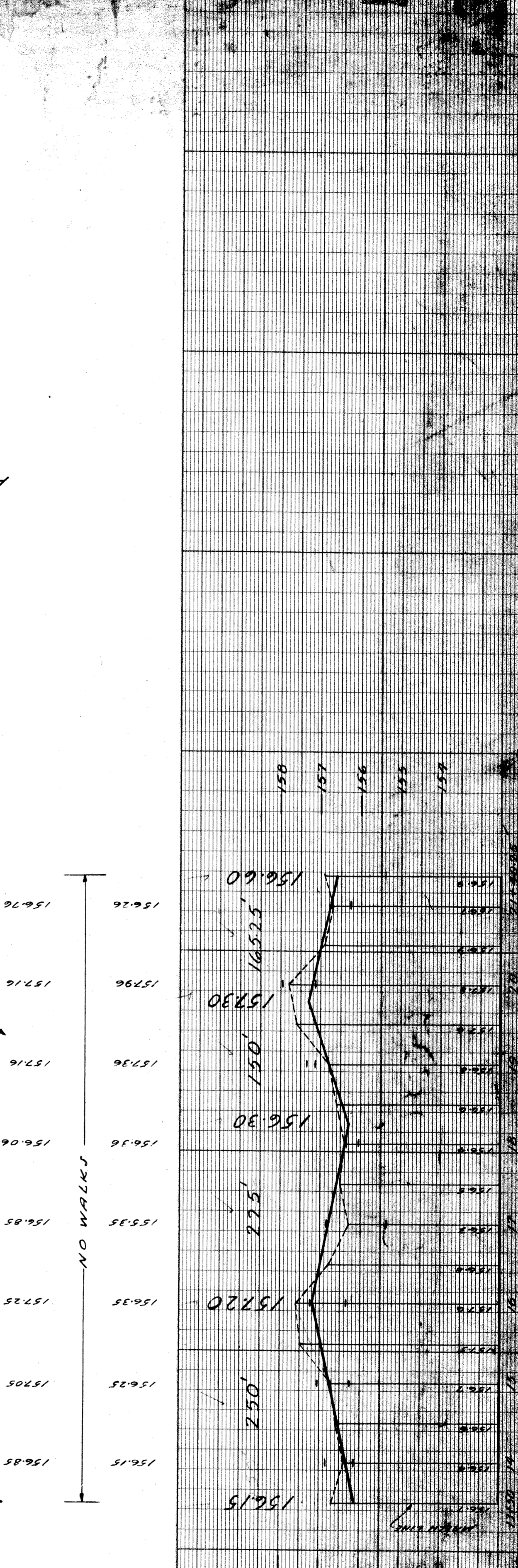
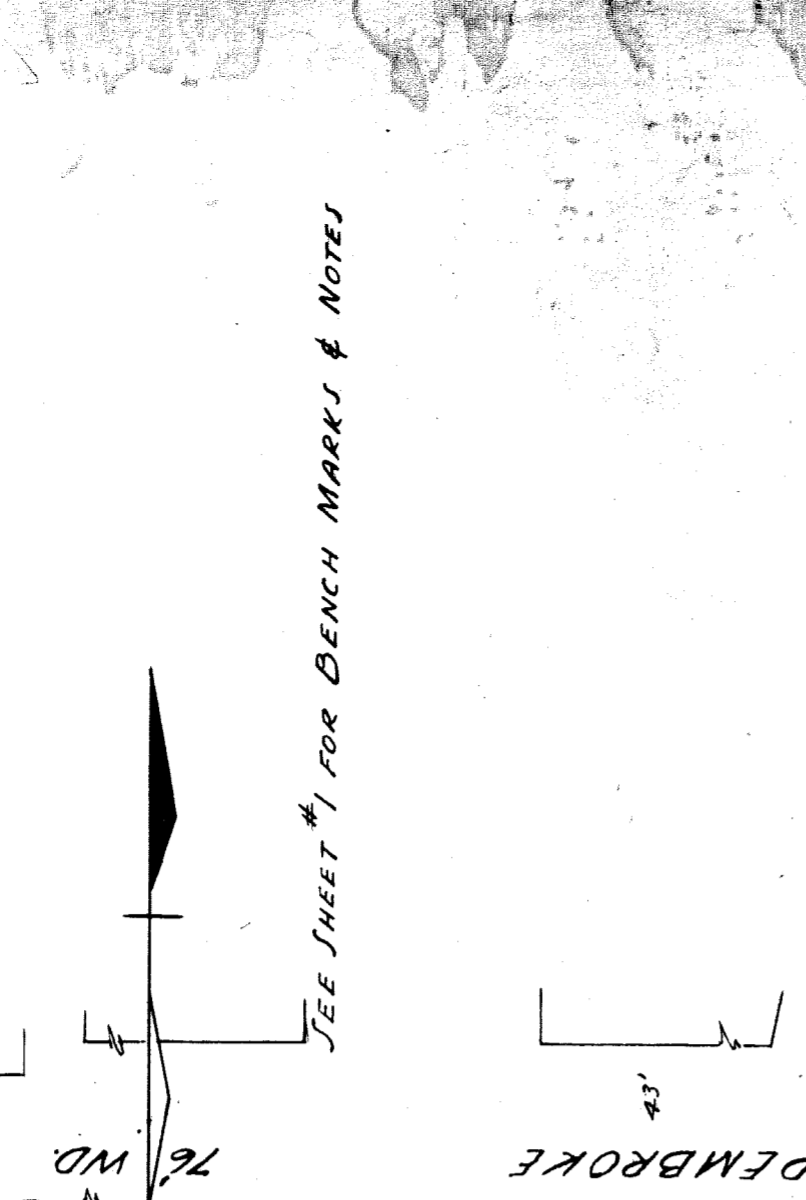
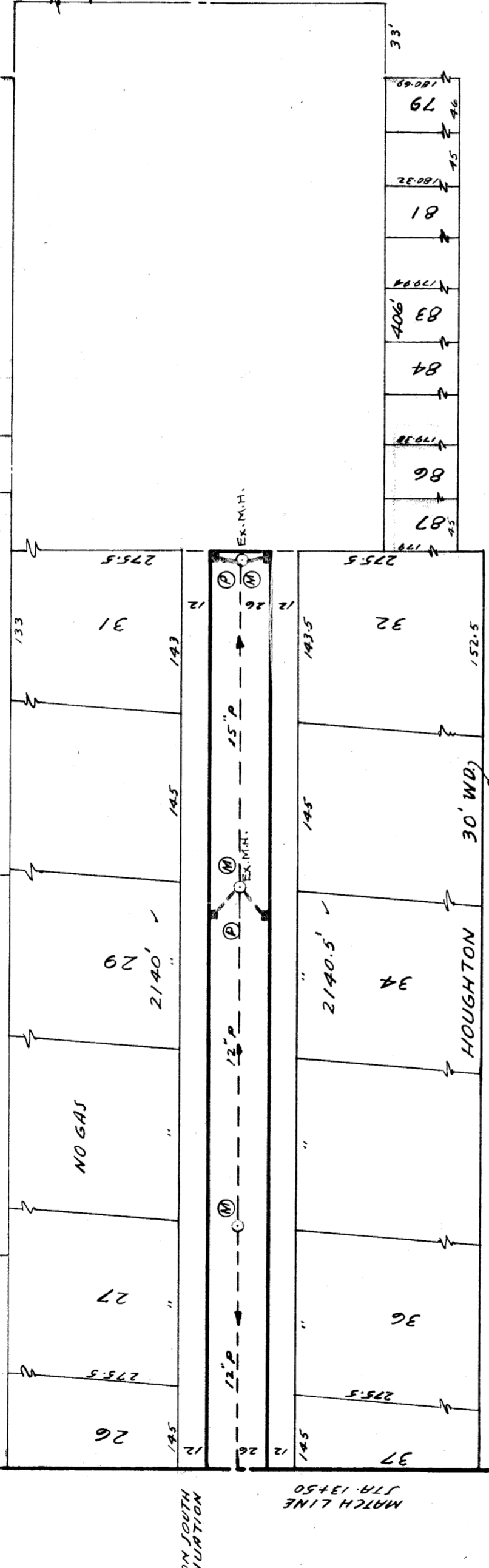
TO 2140 N. OF N.P.L. SEVEN MILE RD.

TYPE OF PAVEMENT

WIDTH 26' & 30'

NUMBER OF SHEETS 2

SHEET NO. 2



SEE SECTION SOUTH FOR CONTINUATION OF PLAN

SEE SHEET #1 FOR BENCH MARKS & NOTES

DEPARTMENT OF PUBLIC WORKS DETROIT

CITY ENGINEER'S OFFICE --- DIVISION OF PAVING DESIGN

STREET PAVING PLAN APG 1-111

NORTHROP

FROM 14 S. OF N.P.L. SEVEN MILE RD.

TO 2140 N. OF N.P.L. SEVEN MILE RD.