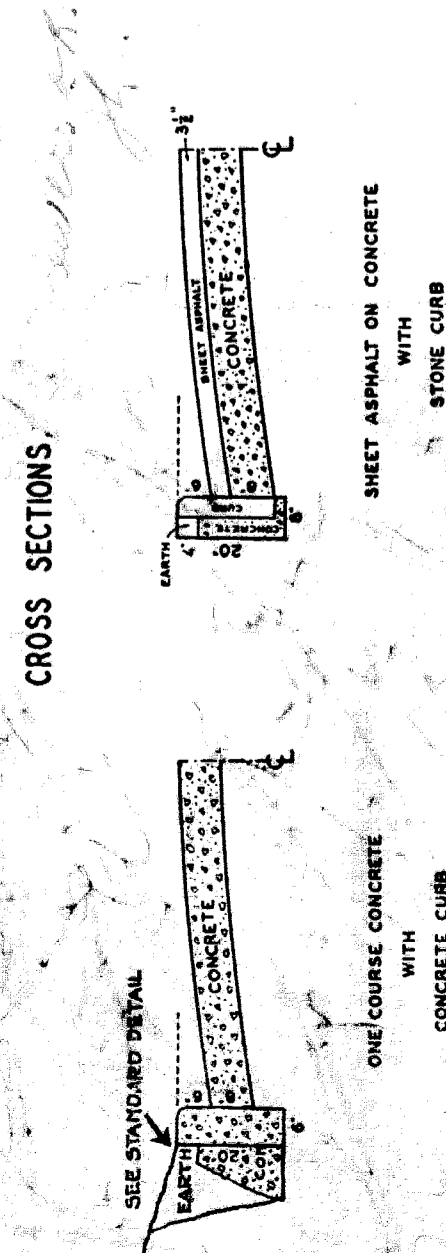


DEPARTMENT OF PUBLIC WORKS DETROIT
 CITY ENGINEER'S OFFICE - DIVISION OF PAVING DESIGN
STREET PAVING PLAN
 MORAN AVE. 50 FT. WD.
 MENICHOLS RD. (N.L.)
 MINNESOTA AVE. (S.L.)

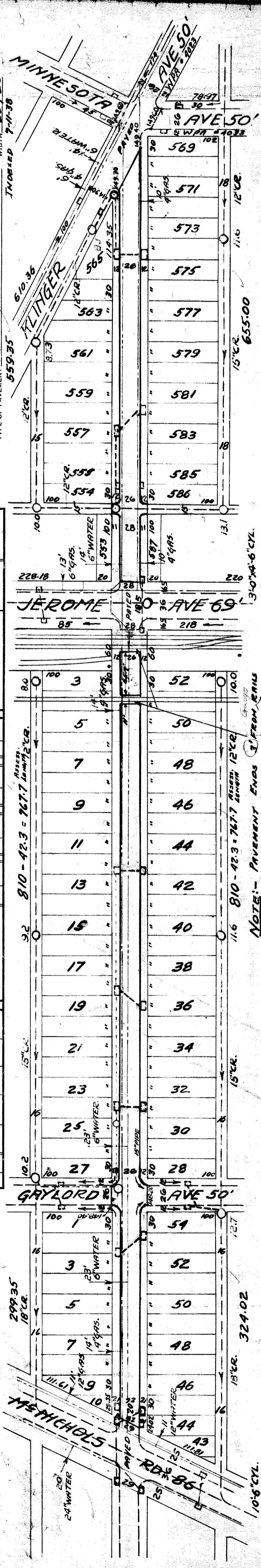
BOOK 1005 PAGE 16	DATE 6-9-1938	COMPUTED	1/6
VER. SCALE 1" = 2'	HOR. SCALE 1" = 100'	CHECKED	1/6
PLAN	NO. 1	GRADE	1/6
CITY	LOT	LENGTH	1 621.58
CITY	LOT	LENGTH	65
CITY	LOT	LENGTH	1 726.98
CITY	LOT	LENGTH	65



DESIGNED BY *Guillemette*
 DRAWN BY *J.W. Williams*
 TRACED BY *J.W. Williams*
 CHECKED BY *W. J. Williams*
 APPROVED *W. J. Williams*
 ENGINEER OF STREETS,
 MASSACHUSETTS CITY ENGINEER

BENCH MARKS
 B.M. - ARROW ON HYD. - N.E. COR. MENICHOLS & MORAN 151.15
 B.M. - ARROW ON HYD. - S.E. COR. GAYLORD & MORAN 151.27
 B.M. - SPIKE IN POLE - S.W. COR. GAYLORD & MORAN 149.49
 B.M. - ARROW ON HYD. - S.W. COR. JEROME & MORAN 152.18
 B.M. - ARROW ON HYD. - W. SIDE MORAN AT HOUSE # 1739 151.73
 B.M. - ARROW ON HYD. - N.W. COR. MORAN, ALINGER, & MINNESOTA 152.58

Revision: 10-27-28
 Pavement width changed from 30 to 26.
 Returns on intersecting 50 streets changed from 30 to 26.

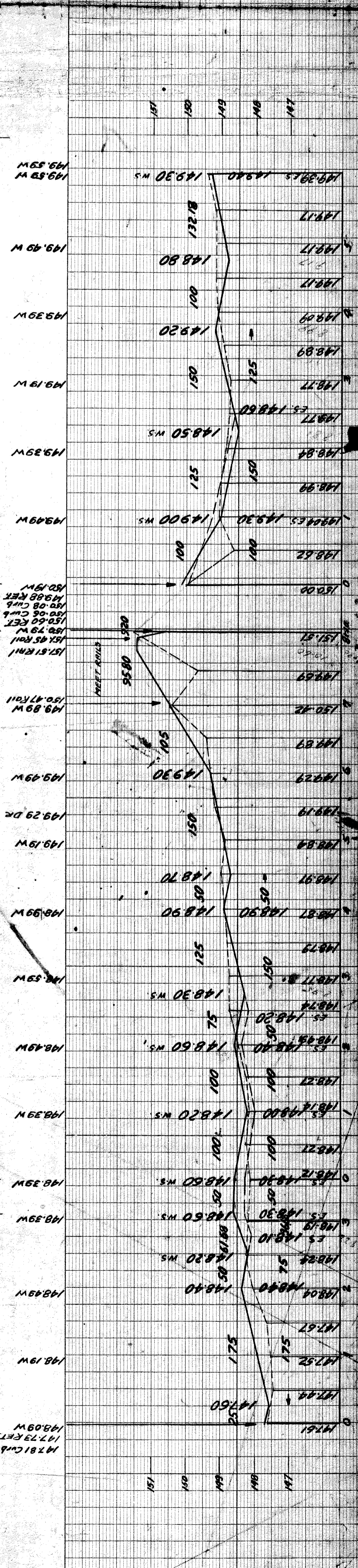


TYPE OF PAVEMENT 6" One Course Concrete
 WIDTH 26.428
 THICKNESS 7.1438

GRADE O.K. FOR EST. GRADE.

NOTE: - PAVEMENT ENDS 3' FROM RAILS IN ELEM. GRADE 2.0'

9' WALKS - BAD CONDITION



WATER MAINS 6.53336
 SUMP MANHOLE
 BASINS BY V.P.
 COMPLETED 7-10-29