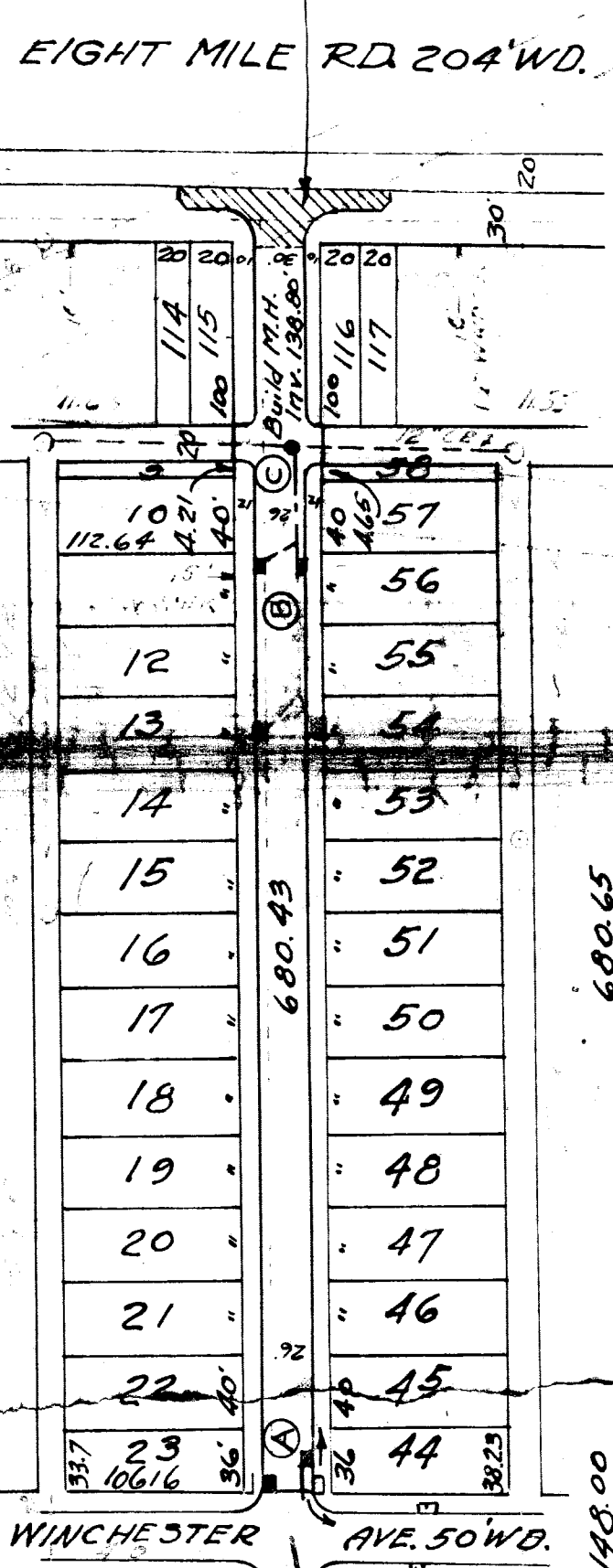


MITCHELL AVE. 50' WD.  
FROM OUTER DRIVE TO WINCHESTER

STREET MITCHELL  
FROM N. PL. OF WINCHESTER  
TO 30' N. OF S.P.L. OF 8 MILE RD.  
APPLICATION # 248-56 2-18-46  
410' S. OF WINCHESTER TO 8 MILE RD.

APPROVED  
ENGINEER OF STREETS  
ASSIST. CITY ENGINEER

FOR GRADING STONING & DRAINAGE  
S. K. ROOM  
2-28-46



148.94	148.94	148.94	148.94
149.24	149.24	149.24	149.24
148.54	148.54	148.54	148.54
148.81	148.81	148.81	148.81
149.74	149.74	149.74	149.74
149.36	149.36	149.36	149.36
149.51	149.51	149.51	149.51
149.41	149.41	149.41	149.41
149.19	149.19	149.19	149.19
149.04	149.04	149.04	149.04
148.84	148.84	148.84	148.84
148.61	148.61	148.61	148.61
148.94	148.94	148.94	148.94

VOID - See New MAP 6-3-43  
OUTER DR. TO WINCHESTER

BENCH MARKS  
ARROW ON HWD. S.W. COR. STATE FAIR & REVERE 152.65  
ARROW ON HYD. S.W. COR. STATE FAIR & GALLAGHER 151.46  
ARROW ON HYD. SE. COR. MITCHELL & STATE FAIR 151.45  
RR. SPK. IN LT. POLE S.W. COR. REMINGTON & MITCHELL 148.86  
"X" IN CENTER OF CURB CIRCLES W. COR. MITCHELL & WINCHESTER 147.91  
18 IN OAK & EIGHT MILE OPP. E. PROR. LINE OF MITCHELL 150.35

NOTE  
AT (A) ABANDON 2 EXISTING 12" BASINS AND CONSTRUCT 2 STANDARD 18"x12" BASINS COMPLETE AND CONNECT TO EXISTING LINE AS SHOWN.  
AT (B) CONSTRUCT 2 STANDARD 18"x12" BASINS COMPLETE AND CONNECT TO NEW M.H. AND EXISTING LINE AT ALLEY AT "C".  
AT (C) BUILD NEW M.H. COMPLETE AND CONNECT TO EXISTING LINE

147.36	147.36	147.36	147.36
147.60	147.60	147.60	147.60
147.75	147.75	147.75	147.75
146.90	146.90	146.90	146.90
147.80	147.80	147.80	147.80
147.40	147.40	147.40	147.40
147.15	147.15	147.15	147.15
147.00	147.00	147.00	147.00
147.80	147.80	147.80	147.80
147.40	147.40	147.40	147.40
147.15	147.15	147.15	147.15
147.00	147.00	147.00	147.00
147.80	147.80	147.80	147.80
147.40	147.40	147.40	147.40
147.15	147.15	147.15	147.15
147.00	147.00	147.00	147.00