

DEPARTMENT OF PUBLIC WORKS DETROIT
CITY ENGINEER'S OFFICE --- DIVISION OF PAVING DESIGN
STREET PAVING PLAN

NAME OF STREET: **MINT ST.**
 FROM: **10' W. OF E.P.L. OF SPRINGWELLS AVE.**
 TO: **184' E. OF E.P.L. OF SPRINGWELLS AVE.**

TYPE OF PAVEMENT: _____ WIDTH: _____

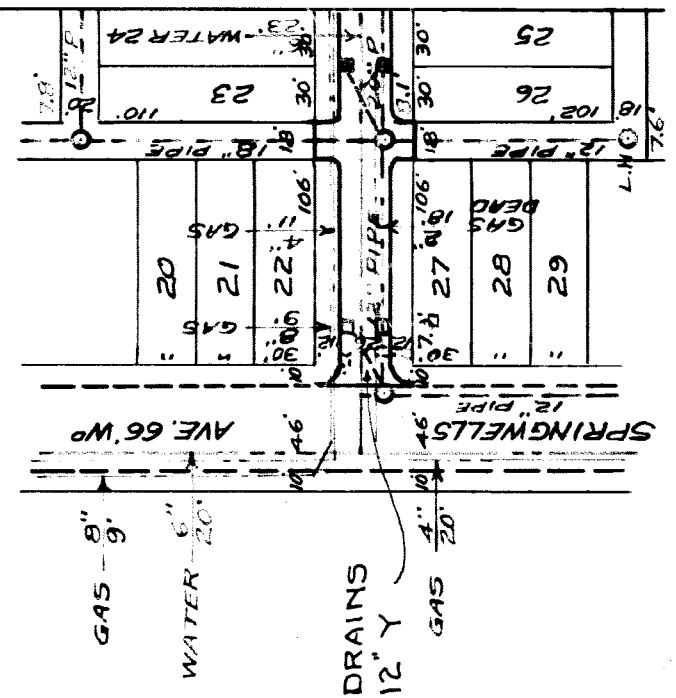
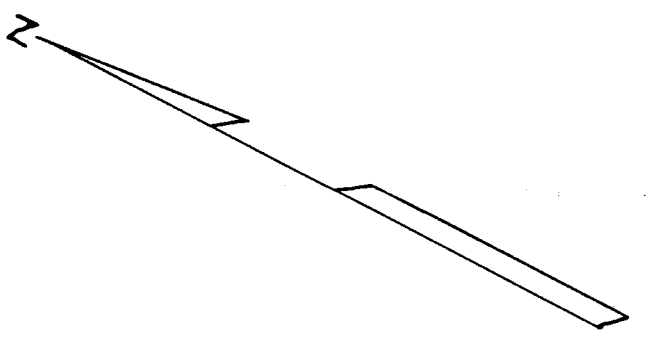
CARD NO. **53 2**
 INDEX NO. **53** TOPO NO. **2**
 RECORD NO. _____

DESIGNED BY: **H.S.**
 DRAWN BY: **F. Minick**
 TRACED BY: _____
 CHECKED BY: **R.R.**
 APPROVED: **M. Q. Wallace**
 ENGINEER OF STREETS
Martha R. Fisher
 ASSISTANT CITY ENGINEER

HOR. SCALE: 1" = 100'	BOOK: 479	PAGE: 55
VER. SCALE: 1" = 2'	DATE: 6-19-41	
PLAN: F.M.	PROFILE: F.M.	COMPUTED: F.M.
CHECKED: _____	GRADE: H.S.	CHECKED: R.R.
LOTS: 2L	LENGTH: 166.00	
CITY: 2L	LENGTH: 28.00	
TOTAL: 2L	LENGTH: 194.00	
CITY		
COST ADVERTISING BLANKS		
COST INSPECTION		

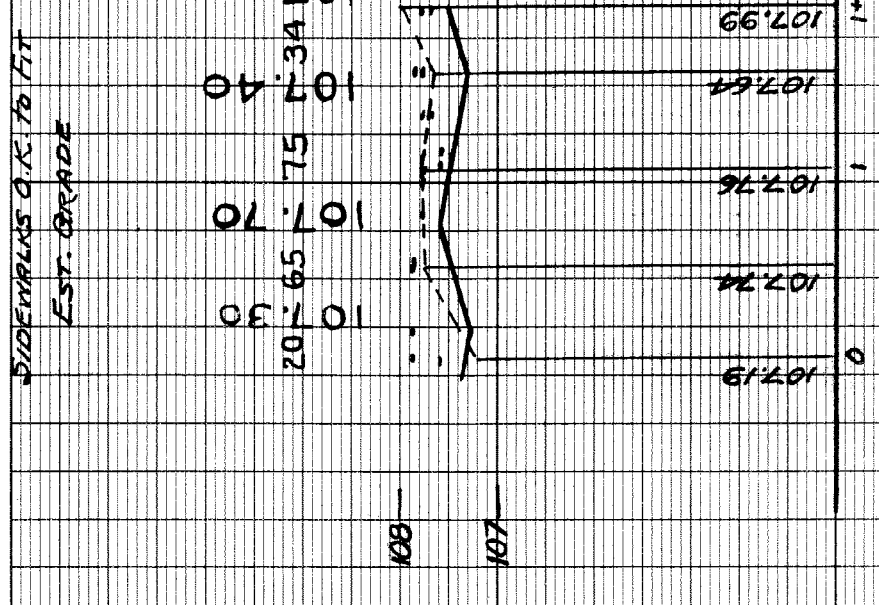
QUANTITIES	LOTS	CITY	LOTS	CITY
EXCAVATION				
STRAIGHT CURB NEW				
OLD CURB RESET				
CIRCULAR CURB				
PAVING				
CONCRETE BASE				

JOB NO.	PROGRESS	
	START	FINISH
BLUE PRINT ISSUED FOR:	DATE	
GRADE ONLY		
CATCH BASINS		
PAVING-CLASS-		
DEPT. OF WATER SUPPLY		
GAS CO.		



REPLACE OLD POOL DRAINS WITH STANDARD 18"x12" Y C. BS & CONNECT TO EXISTING MAN HOLE

107.37 CURB
 107.59 WK. BASIN
 107.89 DR. WK.
 107.89 WK.
 108.09 AREAWAY
 107.79 DRIVE
 107.79 WK. DRIVE
 107.79 WK. S. ALLEY
 107.79 M.H.
 107.79 WK. S. ALLEY
 108.39 INVERT CROSS-OVER DRAIN 108.39
 107.69 WK. S. ALLEY
 107.79 WK.
 107.79 WK. END OF MARKS 107.69 WK.



STATIONING	ELEVATION	REMARKS
0	107.19	
1	107.74	
2	107.76	
3	107.64	
4	107.40	
5	107.60	
6	107.30	
7	107.70	
8	107.75	
9	107.34	
10	107.99	

JOB-NO-D-1085

BENCH MARKS
 2.210 ON THE W. SIDE OF CENTRAL. 30 S OF LOGAN. IS A CROSS ON A
 DOORSTEP AT 1539 CENTRAL
 113.481
 SPK. IN POLE N.E. COR. MINT & SPRINGWELLS
 109.18