

DEPARTMENT OF PUBLIC WORKS DETROIT

CITY ENGINEER'S OFFICE - DIVISION OF PAVING DESIGN

STREET PAVING PLAN

MINOCK AVE.

FROM N. P.L. TIREMAN AVE.

TO 23RD OF S.P.L. JOY ROAD

TYPE OF PAYMENT: 30436

REQUESTED BY MR. WILSON OF THE SHELDON LAND CO. 8-10-44

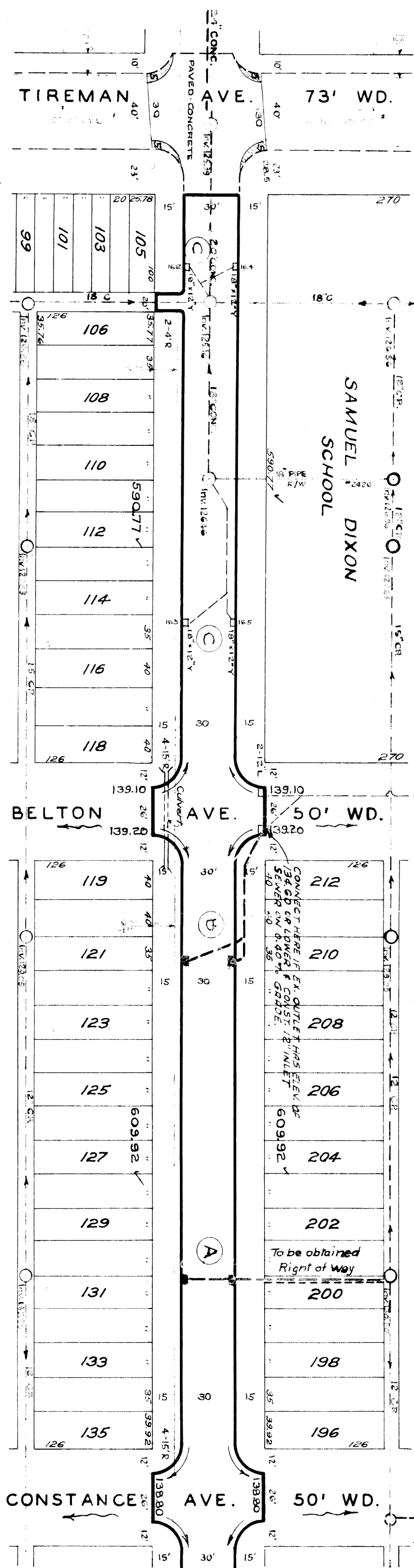
CARD NO.	INDEX TOPO NO.	INDEX NO.	NUMBER OF SHEETS
	78 109		2
RECORD NO.	NAME OF STREET	FROM	SHEET NO.
	N. P.L. TIREMAN AVE.		1

DATE	SEP 14, 1944
SCALE	1" = 100'
PLAN	V.H. PROFILE
CHECKED BY	R.E.R.
REVISIONS	
DATE	
APPROVED	
CITY ENGINEER	

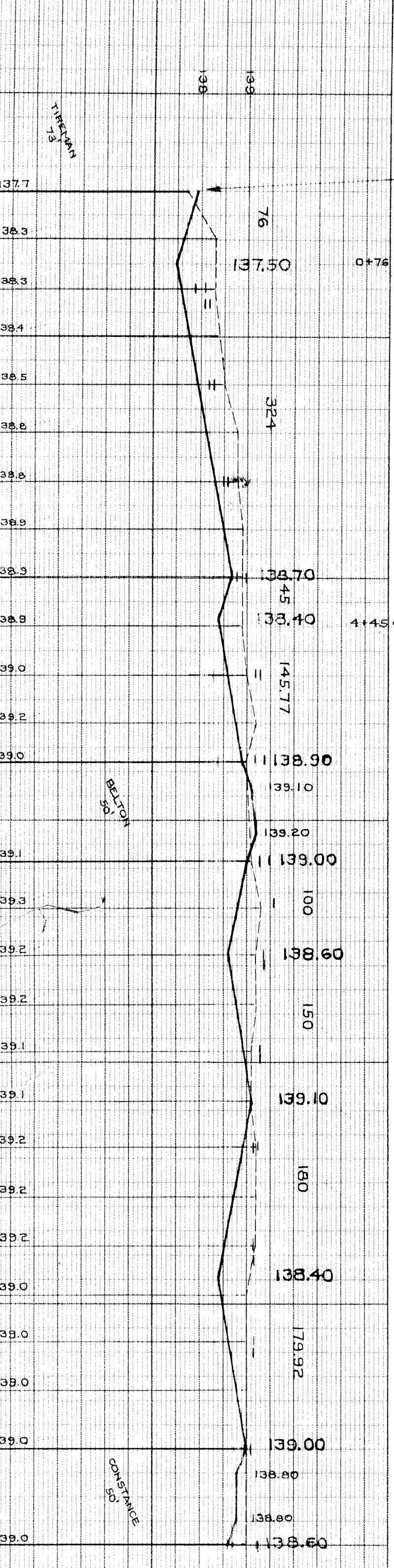
DESIGNED BY: V.T. HILLIC
 DRAWN BY: *[Signature]*
 CHECKED BY: *[Signature]*
 APPROVED: *[Signature]*
 ENGINEER OF STREETS
 CITY ENGINEER

NOTE: BEFORE STARTING CONSTRUCTION CONTRACTOR MUST CHECK WITH UTILITIES FOR LOCATIONS OF EXISTING STRUCTURES WHETHER OR NOT INDICATED ON PLANS.
 PLAN SCALE DISTORTED
 LOTS & ALLEYS 1" = 100'
 STREET WIDTHS 1" = 50'
 DRAINAGE COMPLETED
 PAVING COMPLETED

QUANTITIES	ESTIMATED	FINAL
EXCAVATION CU YDS.	LOTS	LOTS
NEW CURB LIN FT.	CITY	CITY
PAVING SQ. YDS.		
SIDEWALK SQ. FT.		
MANHOLES ADJUST		
CONSTRUCT		
ADJUST		
CONSTRUCT		
SEWER 12" LIN FT.		
SEWER 18" LIN FT.		



STATION	ELEV.	REMARKS
0+00	137.82	B.M. # 109.255A Handhole N.E. Cor. Tireman & Auburn
0+25	138.19	B.M. # 110.254A N.W. Cor. Auburn & Joy
0+50	138.09	Spike, Lt Pole N.W. Cor. Belton & Minock
0+75	138.19	Letter "R" in "Water" Water Bd. M.H. S.E. Cor. Constance & Minock
1+00	138.19	Spike in L Pole - S.W. Cor. Van Buren & Minock
1+25	138.49	Arrow near top of Hyd. S.E. Cor. Joy & Minock
1+50	138.79	B.M. # 110.254A - N.W. Cor. Auburn & Joy
1+75	138.79	
2+00	138.79	
2+25	138.79	
2+50	138.79	
2+75	138.79	
3+00	138.79	
3+25	138.79	
3+50	138.79	
3+75	138.79	
4+00	138.79	
4+25	138.79	
4+50	138.79	
4+75	138.79	
5+00	138.79	
5+25	138.79	
5+50	138.79	
5+75	138.79	
6+00	138.79	
6+25	138.79	
6+50	138.79	
6+75	138.79	
7+00	138.79	



- AT (A) CONSTRUCT 2 STD. 18" x 12" Y-BASINS & CONNECT TO EXISTING OUTLET AS SHOWN.
- AT (B) CONSTRUCT 2-18" x 12" Y-BASINS WITH TOP 18" SECTION 1 FT. IN LENGTH IN PLACE OF STD. 2 FT. LENGTH.
- AT (C) ADJUST TOPS OF 4 EXISTING 18" x 12" Y-BASINS & FURNISH & INSTALL STD. FRAMES & GRATES.

BENCH MARKS

MARK	ELEV.
B.M. # 109.255A Handhole N.E. Cor. Tireman & Auburn	137.51
B.M. # 110.254A N.W. Cor. Auburn & Joy	140.178
Spike, Lt Pole N.W. Cor. Belton & Minock	140.34
Letter "R" in "Water" Water Bd. M.H. S.E. Cor. Constance & Minock	139.88
Spike in L Pole - S.W. Cor. Van Buren & Minock	140.10
Arrow near top of Hyd. S.E. Cor. Joy & Minock	142.95
B.M. # 110.254A - N.W. Cor. Auburn & Joy	140.23