

SEWER	18" x 12" Y-BASINS
REVISIONS	1. 10/1/39
SUPPLEMENTARY DETAILS	
DRAWING NO.	

NOTE:
BEFORE STARTING CONSTRUCTION CONTRACTOR MUST CHECK WITH UTILITIES FOR LOCATIONS OF EXISTING STRUCTURES WHETHER OR NOT INDICATED ON PLANS.

PLAN SCALE DISTORTED
LOTS & ALLEYS: 1" = 100'
STREET WIDTHS: 1" = 50'

DRAINAGE COMPLETED
PAVING COMPLETED

QUANTITIES	ESTIMATED	FINAL
EXCAVATION CU. YDS.	LOTS	CITY
NEW CURB LIN. FT.	LOTS	CITY
PAVING SQ. YDS.	LOTS	CITY
SIDEWALK SQ. FT.	LOTS	CITY
MANHOLES ADJUST CONSTRUCT	LOTS	CITY
BASEINS ADJUST CONSTRUCT	LOTS	CITY
SEWER-12" LIN. FT.	LOTS	CITY
SEWER-18" LIN. FT.	LOTS	CITY

HOR. SCALE	1" = 100'	REC'D	SEP 14 1939
VERT. SCALE	1" = 2'	CHECKED	SEP 14 1939
PLAN	V.H. PROFILE	DATE	SEP 14 1939
CHECKED	R.C.R.	CITY	RECORDED
LOT	RE	LENGTH	CHECKED
CITY	RE	LENGTH	CHECKED
TOTAL	RE	LENGTH	CHECKED
CITY	RE	LENGTH	CHECKED

DESIGNED BY	V.T. HILLIER
DRAWN BY	
TRACED BY	
CHECKED BY	R.E.C.
APPROVED	
ENGINEER OF STREETS	
CITY ENGINEER	

ASSIGNMENT # 7238

DEPARTMENT OF PUBLIC WORKS DETROIT

CITY ENGINEERS OFFICE ... DIVISION OF PAVING DESIGN

STREET PAVING PLAN

MINOCK AVE.

FROM N.P.L. TIREMAN AVE.

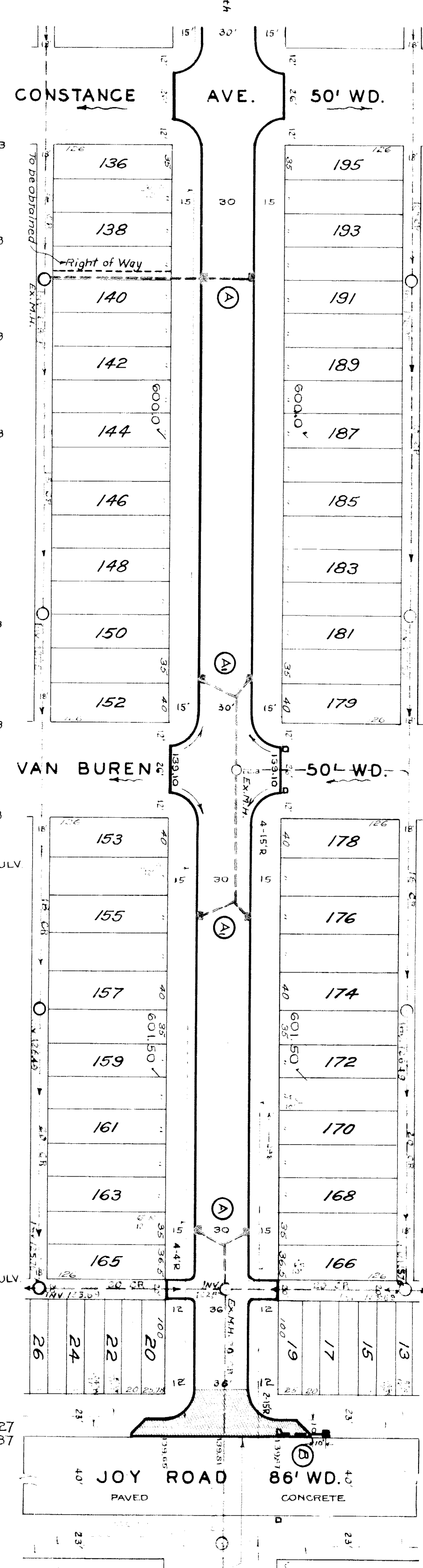
23' N OF S.P.L JOY ROAD

INDEX 1090 NO. 78

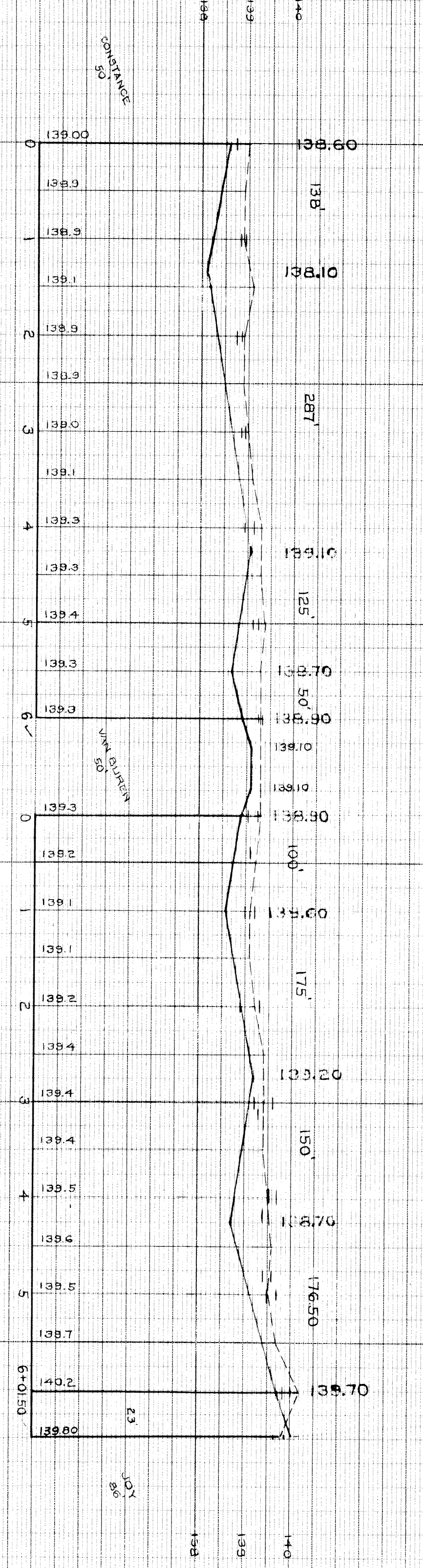
INDEX 1091 NO. 109

NUMBER OF SHEETS 2

TYPE OF PAVEMENT 30' x 36'



138.73	138.83	138.73	138.93	139.13	139.23	139.33	139.03	139.2	139.3	139.6	139.7	139.4	139.5	139.83
6 FT WALK - 1 FT OFF P.L. - BOTH SIDES - POOR	6 FT WALK - 1 FT OFF P.L. - BOTH SIDES - POOR	6 FT WALK - 1 FT OFF P.L. - BOTH SIDES - POOR	6 FT WALK - 1 FT OFF P.L. - BOTH SIDES - POOR	6 FT WALK - 1 FT OFF P.L. - BOTH SIDES - POOR	6 FT WALK - 1 FT OFF P.L. - BOTH SIDES - POOR	6 FT WALK - 1 FT OFF P.L. - BOTH SIDES - POOR	6 FT WALK - 1 FT OFF P.L. - BOTH SIDES - POOR	6 FT WALK - 1 FT OFF P.L. - BOTH SIDES - POOR	6 FT WALK - 1 FT OFF P.L. - BOTH SIDES - POOR	6 FT WALK - 1 FT OFF P.L. - BOTH SIDES - POOR	6 FT WALK - 1 FT OFF P.L. - BOTH SIDES - POOR	6 FT WALK - 1 FT OFF P.L. - BOTH SIDES - POOR	6 FT WALK - 1 FT OFF P.L. - BOTH SIDES - POOR	6 FT WALK - 1 FT OFF P.L. - BOTH SIDES - POOR



NOTE:

Construct Return with 10' widening. Slop to be 10" thick. See Std. Detail Sheet C-371.

At (A) Construct 18" x 12" Y-Basins & connect to existing outlets as shown.

At (B) Relocate C.B. & connect to existing outlet.

#1 (A) Construct 4-18" x 12" Y-Basins with top 18" x 12" x 1-ft. in 1 ft. in place of std. 2 ft. length.

REQUESTED BY MR. WILSON OF THE SHELDON LAND CO. 8-10-44

BENCH MARKS

B.M. # 109255 Handhole - NE. Cor. Tireman & Auburn	ELEV.	137.51
B.M. # 110254 A. N.W. Cor. Auburn & Joy	ELEV.	140.178
Spike in Light Pole, N.W. Cor. Belfon & Minock	ELEV.	140.34
Letter "R" in "Water" Water Board M.H. - SE. Cor. Constance & Minock	ELEV.	139.98
Spike in Light Pole - S.W. Cor. Van Buren & Minock	ELEV.	140.10
Arrow on Hyd. S.E. Cor. Joy & Minock	ELEV.	142.95